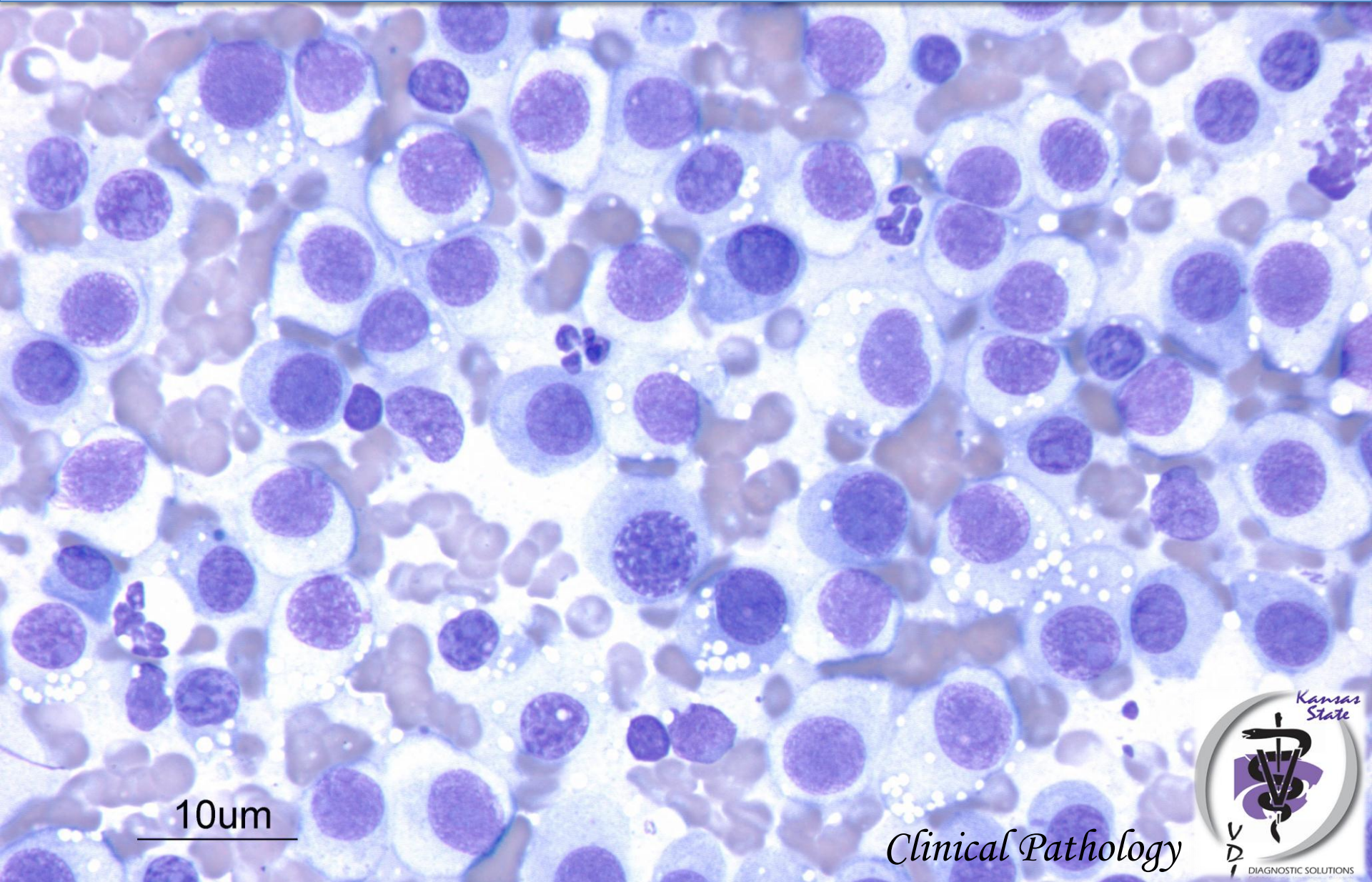
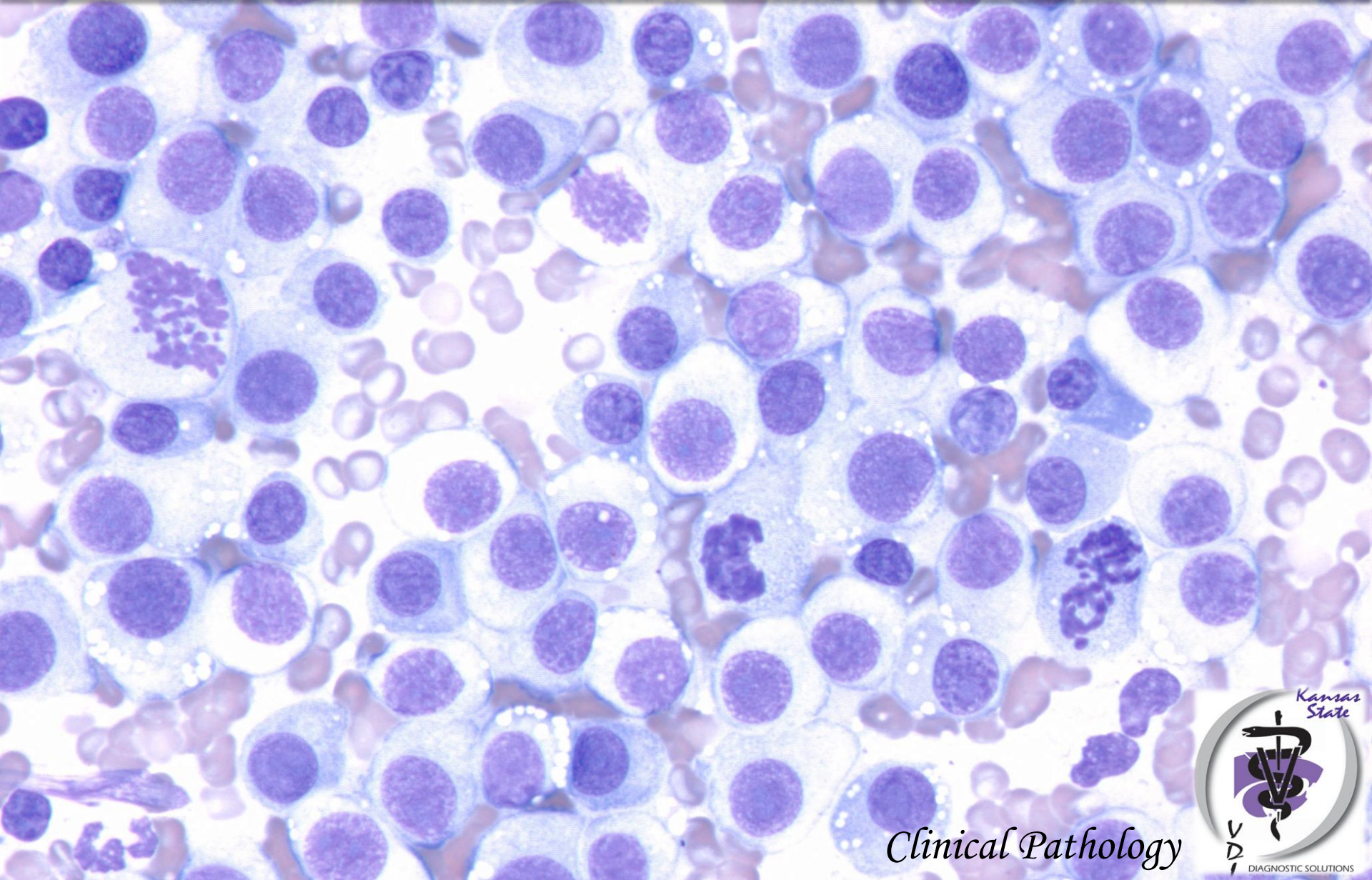


Aspirate from a mass on the muzzle extending into the gingiva of a 3-year-old Miniature Pincher dog



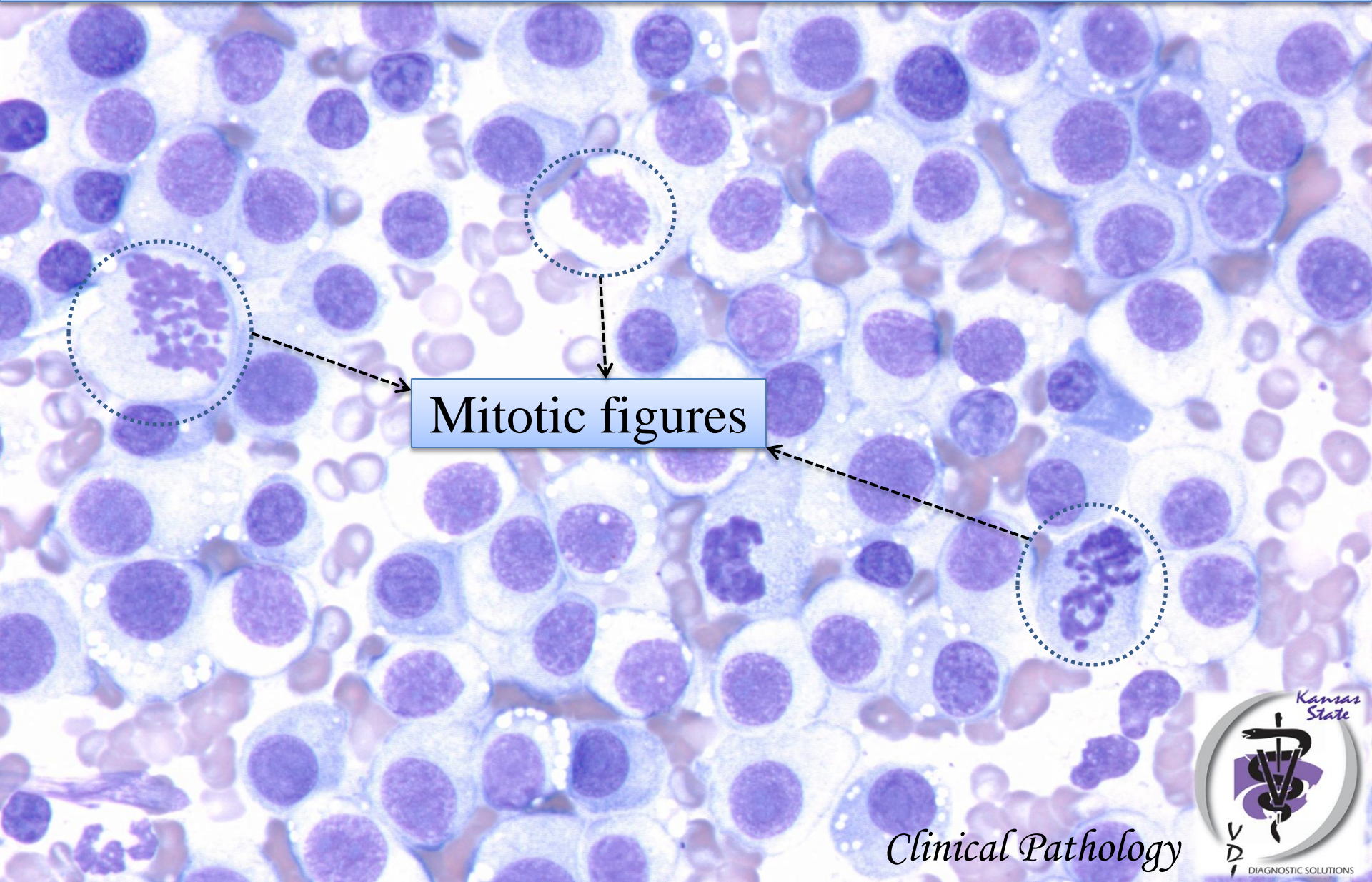
Aspirate from a mass on the muzzle extending into the gingiva of a 3-year-old Miniature Pincher dog

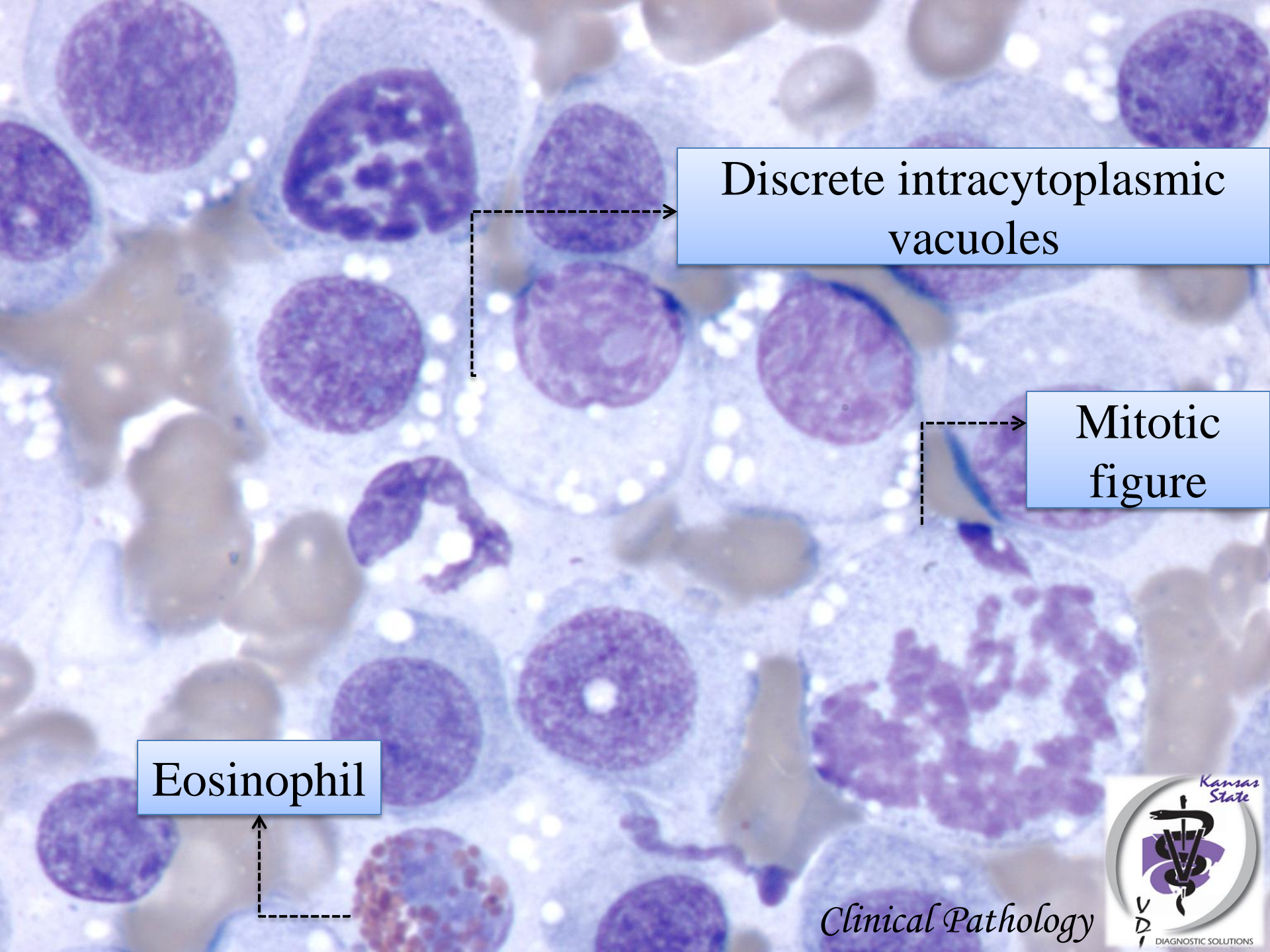


Clinical Pathology



Aspirate from a mass on the muzzle extending into the gingiva of a 3-year-old Miniature Pincher dog





Discrete intracytoplasmic
vacuoles

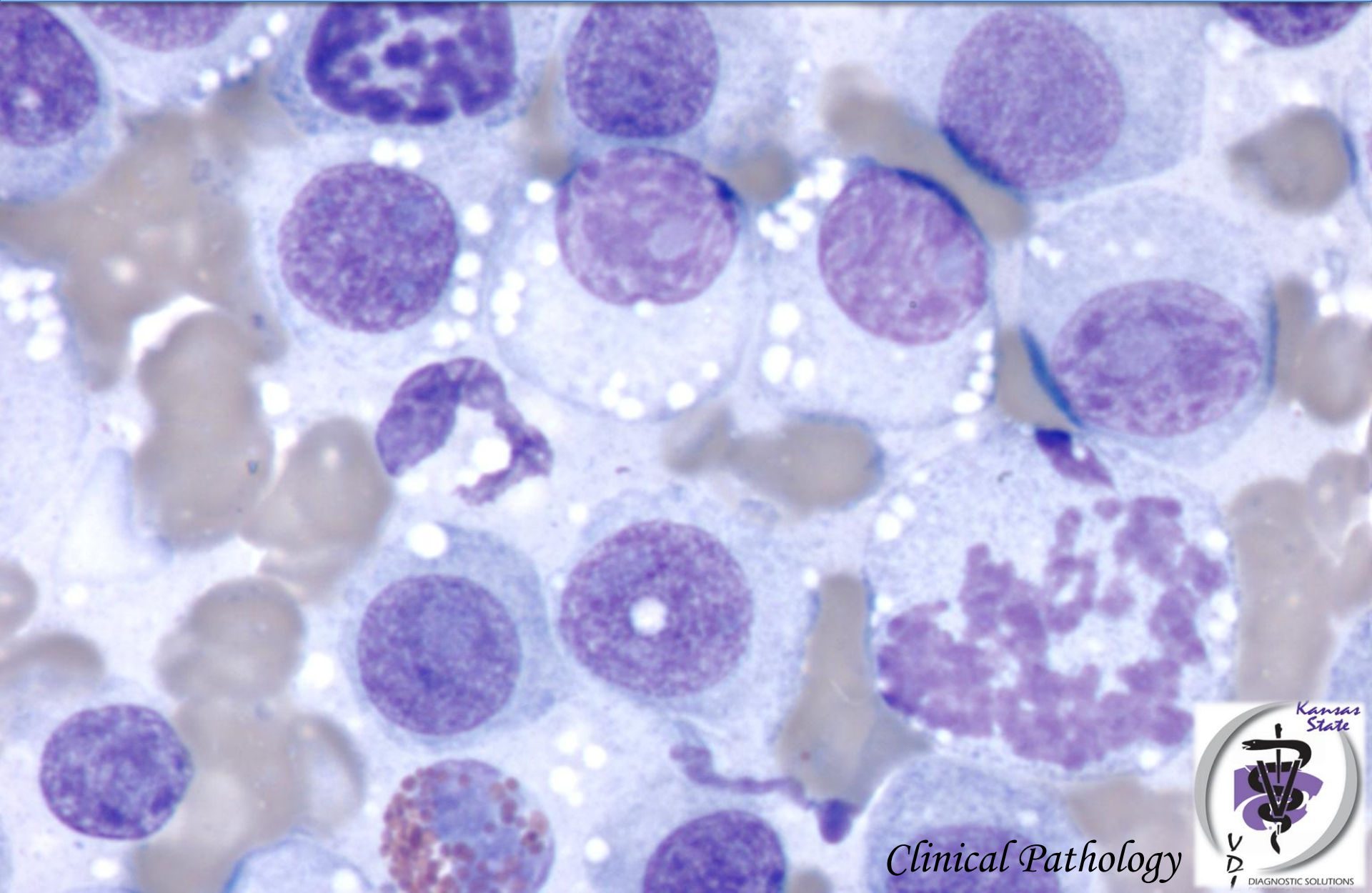
Mitotic
figure

Eosinophil

Clinical Pathology



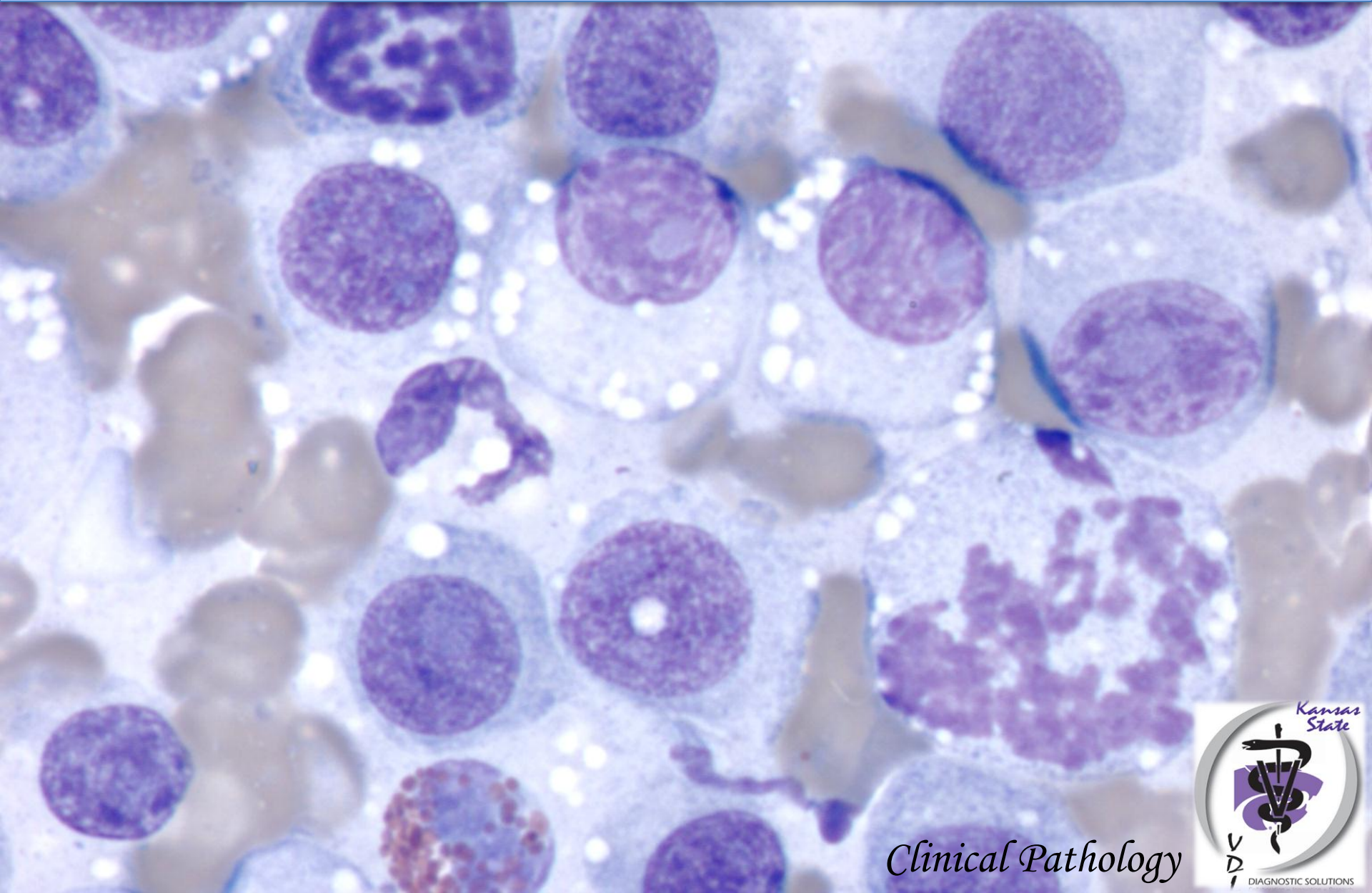
DIAGNOSIS



Clinical Pathology



Transmissible Venereal Tumor



Clinical Pathology

