

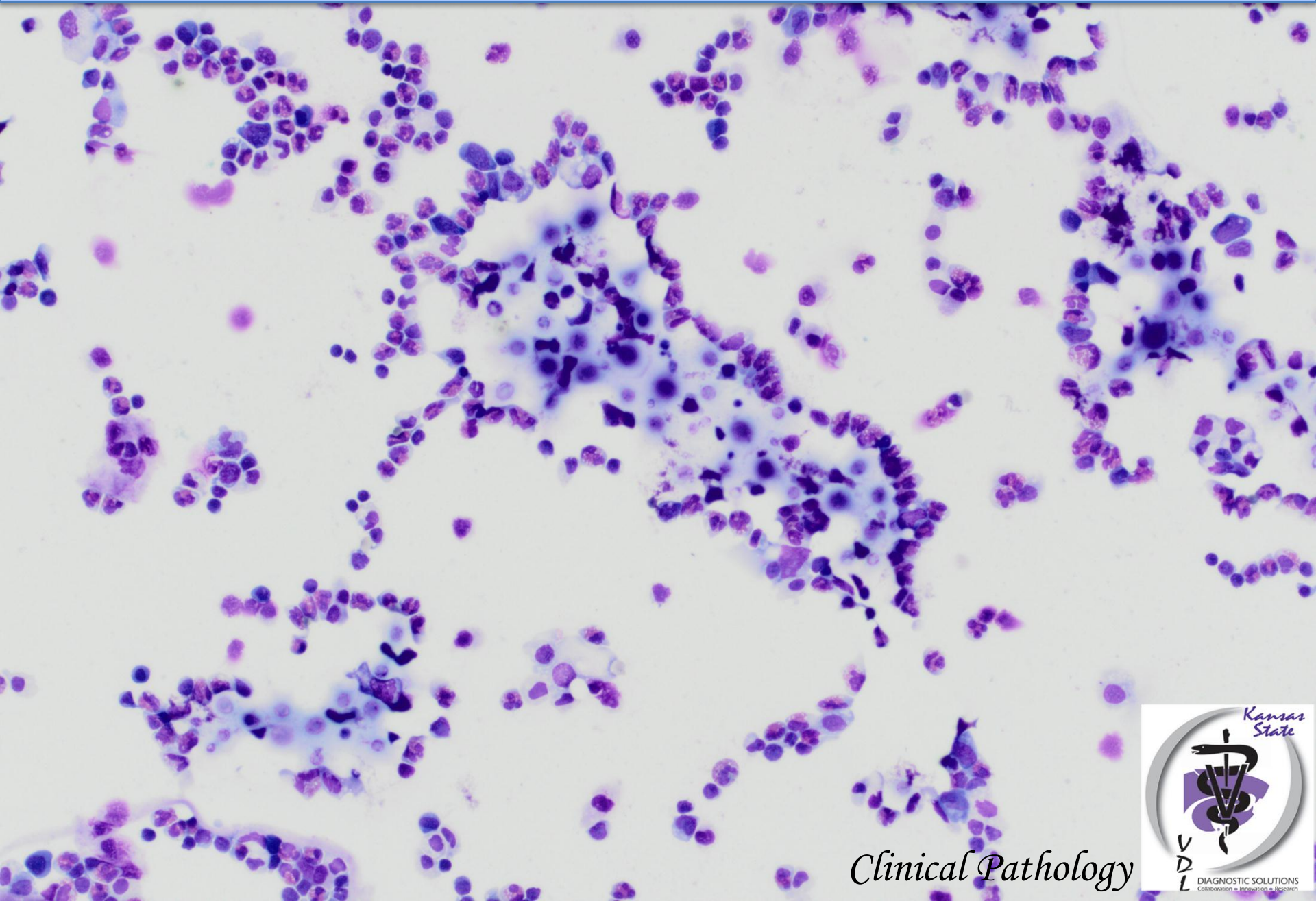
Cerebrospinal fluid analysis from a 2-year-old dog

Total nucleated cell count: 1341 / μ L

Erythrocyte count: 1796 / μ L

Protein: 72 mg/dL

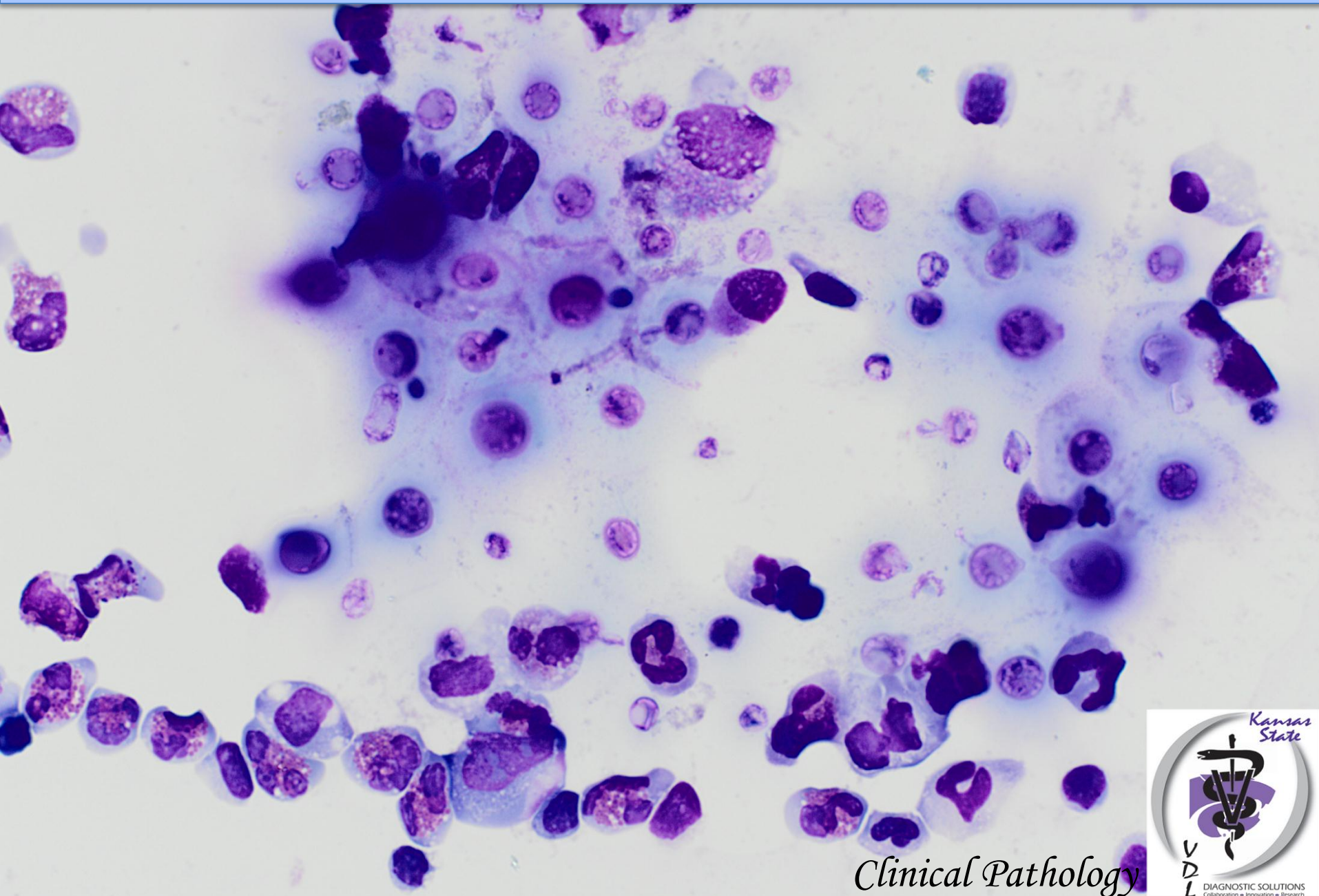
Cerebrospinal fluid analysis from a 2-year-old dog



Clinical Pathology



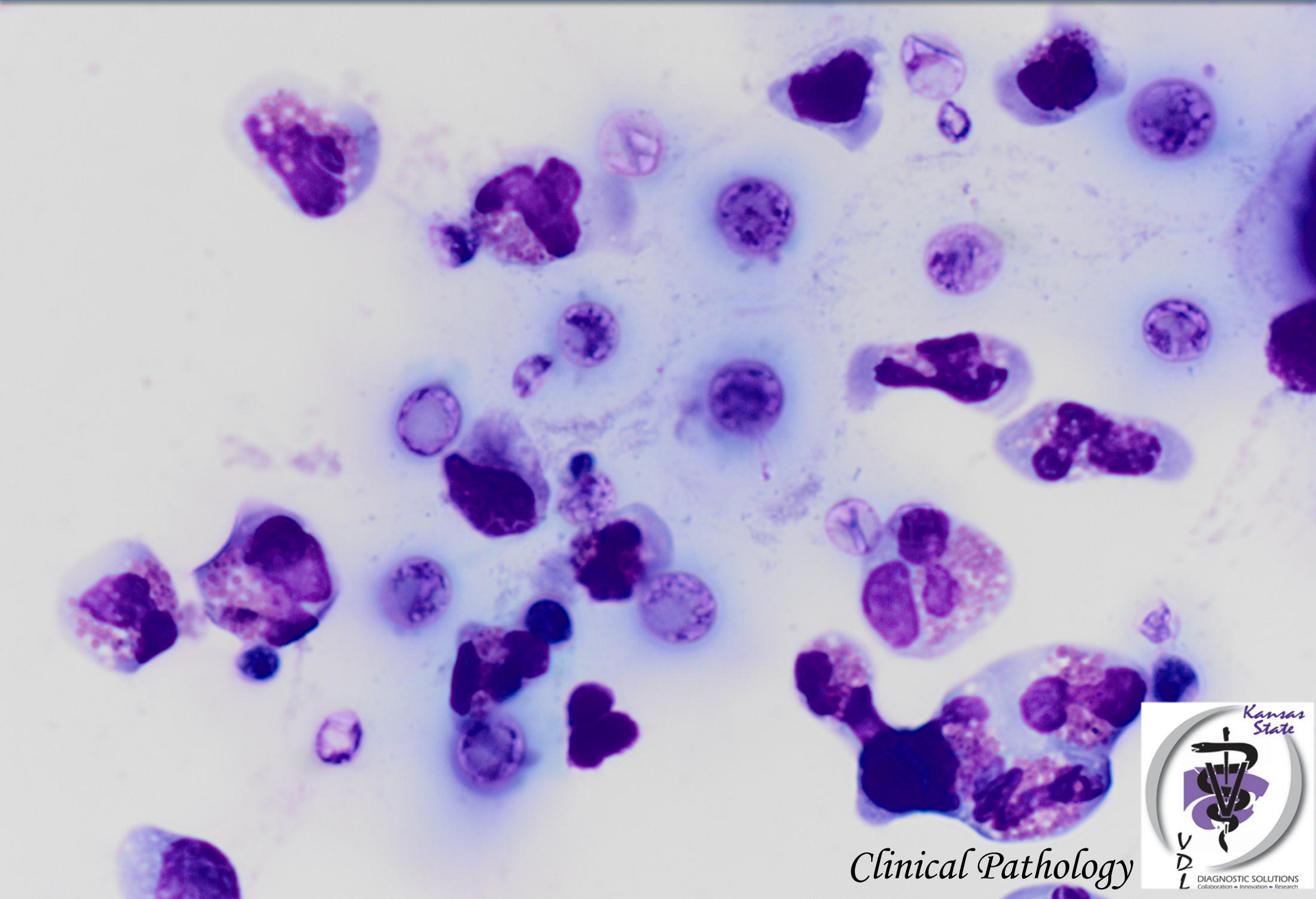
Cerebrospinal fluid analysis from a 2-year-old dog



Clinical Pathology



Cerebrospinal fluid analysis from a 2-year-old dog



Clinical Pathology



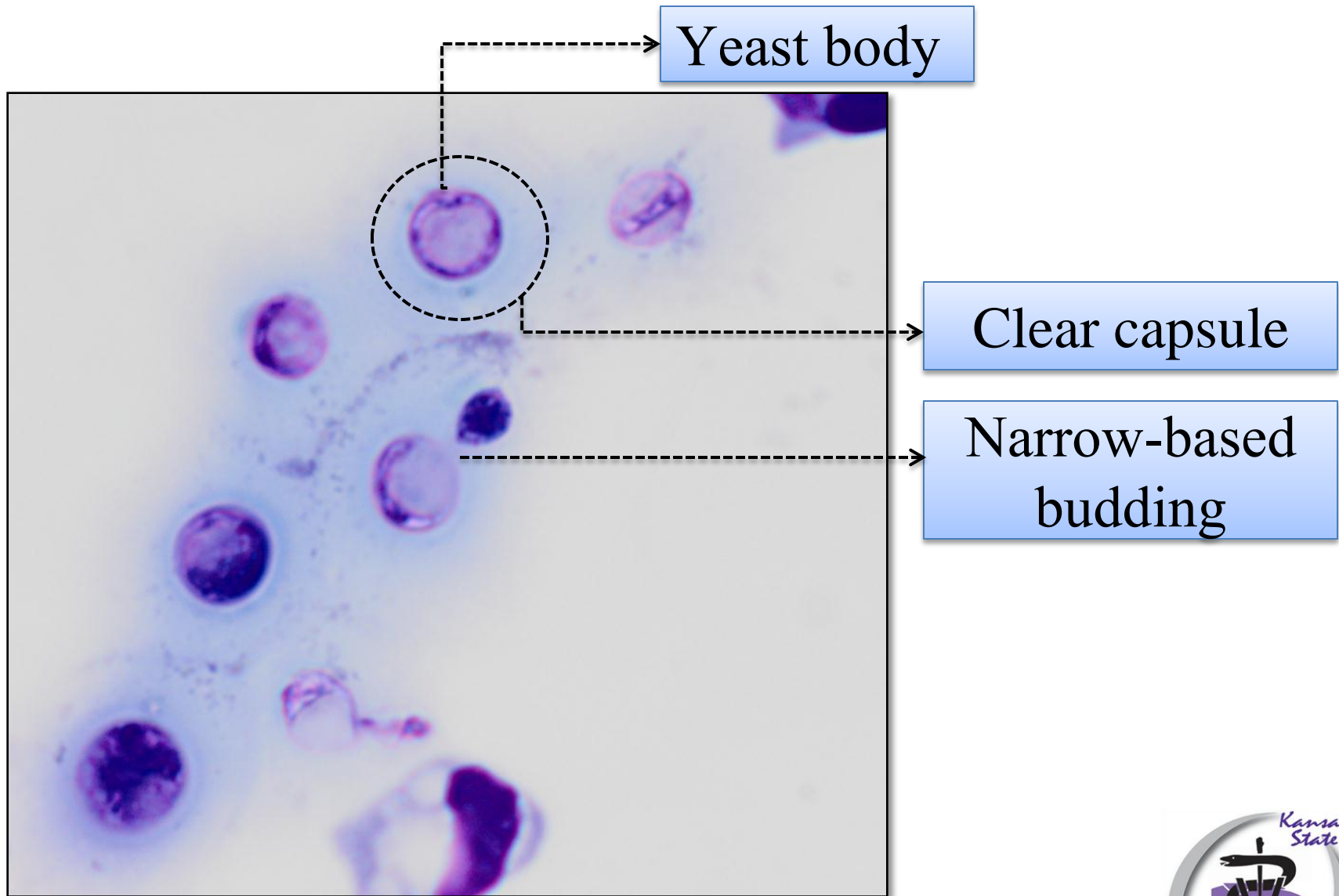
Cerebrospinal fluid analysis from a 2-year-old dog

Eosinophils

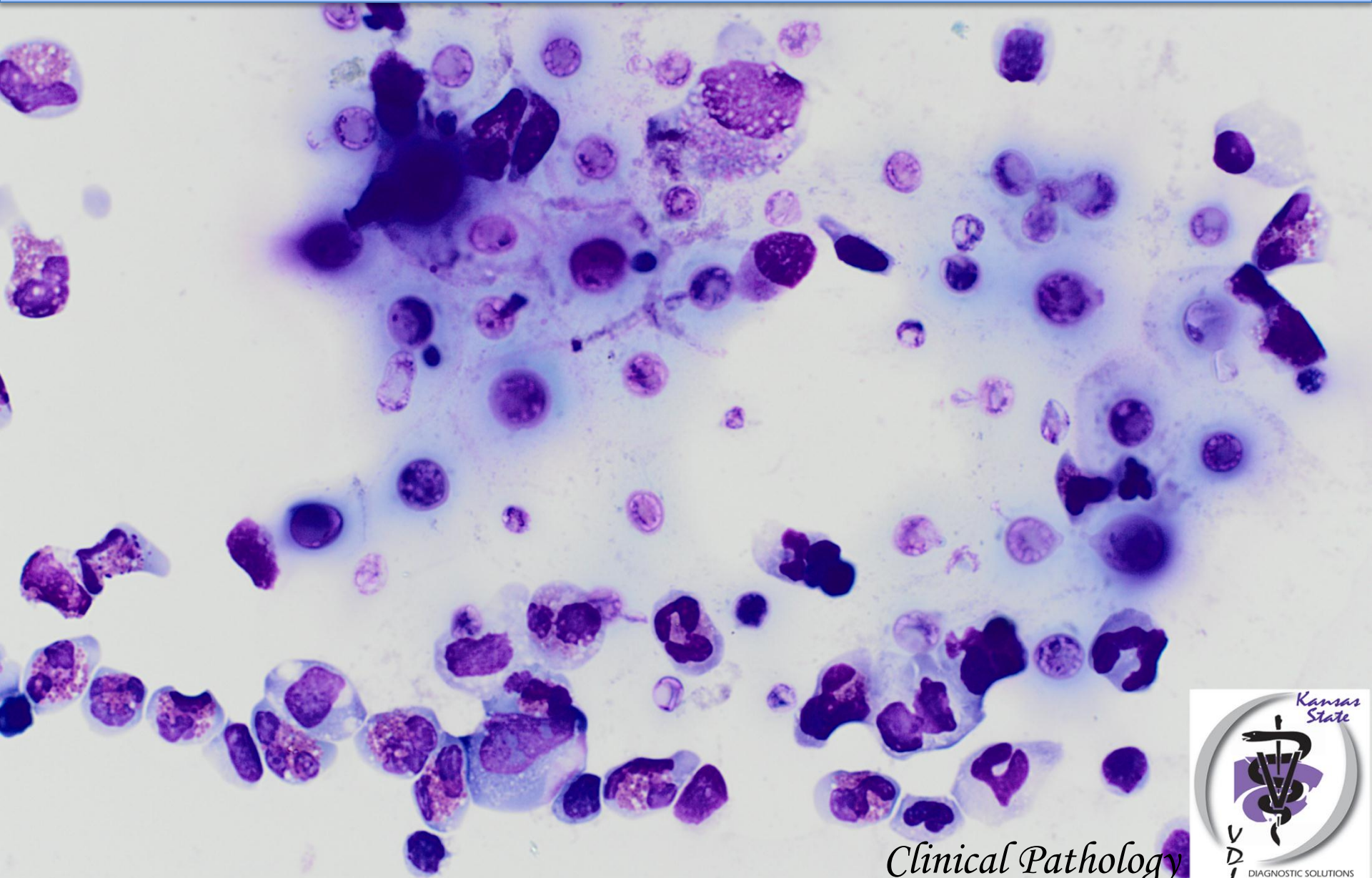
-----> Eosinophils

Clinical Pathology





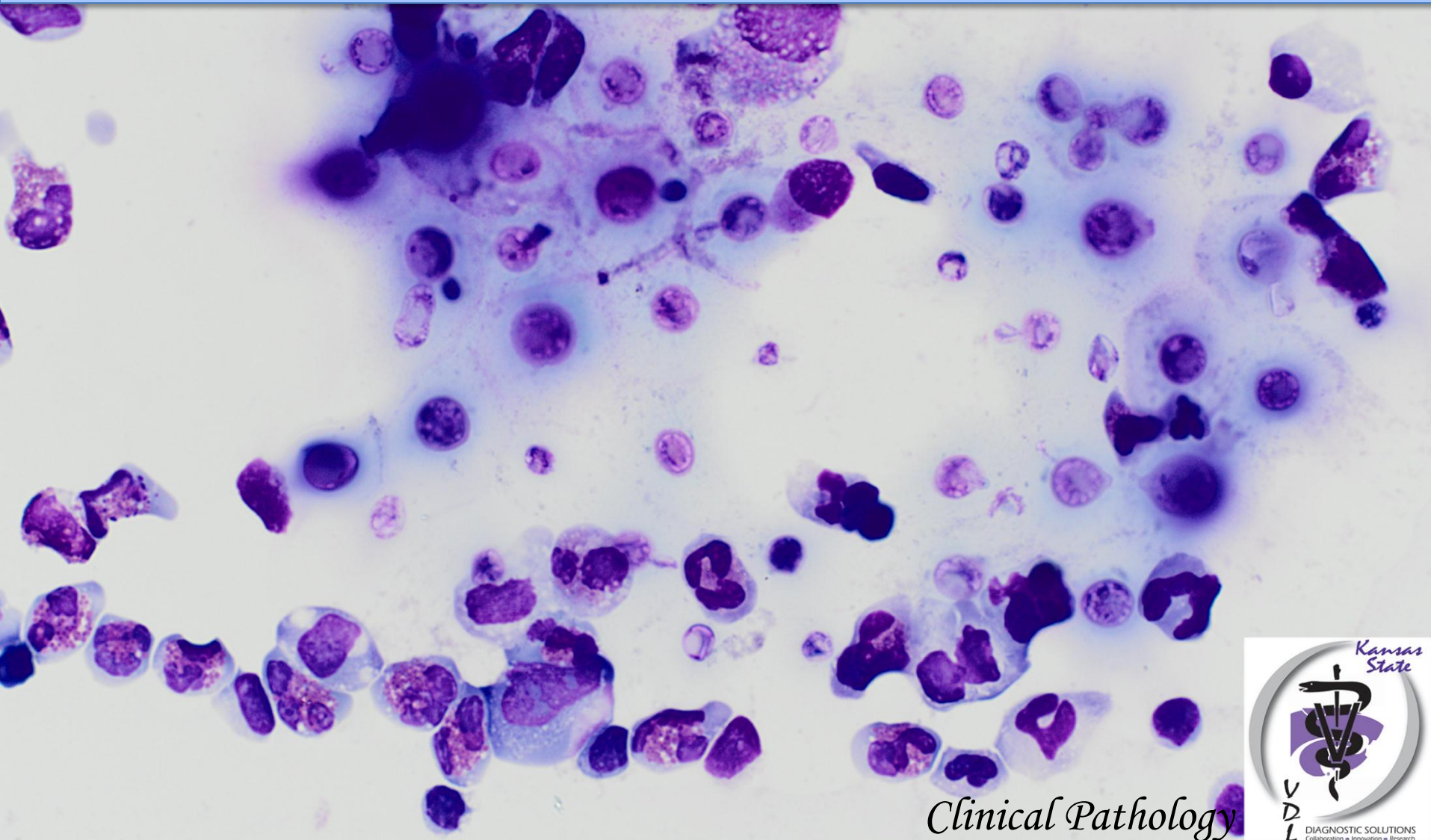
DIAGNOSIS



Clinical Pathology



Cryptococcosis with moderate eosinophilic pleocytosis



Clinical Pathology

