

Peritoneal fluid from a 2-year-old mixed breed dog

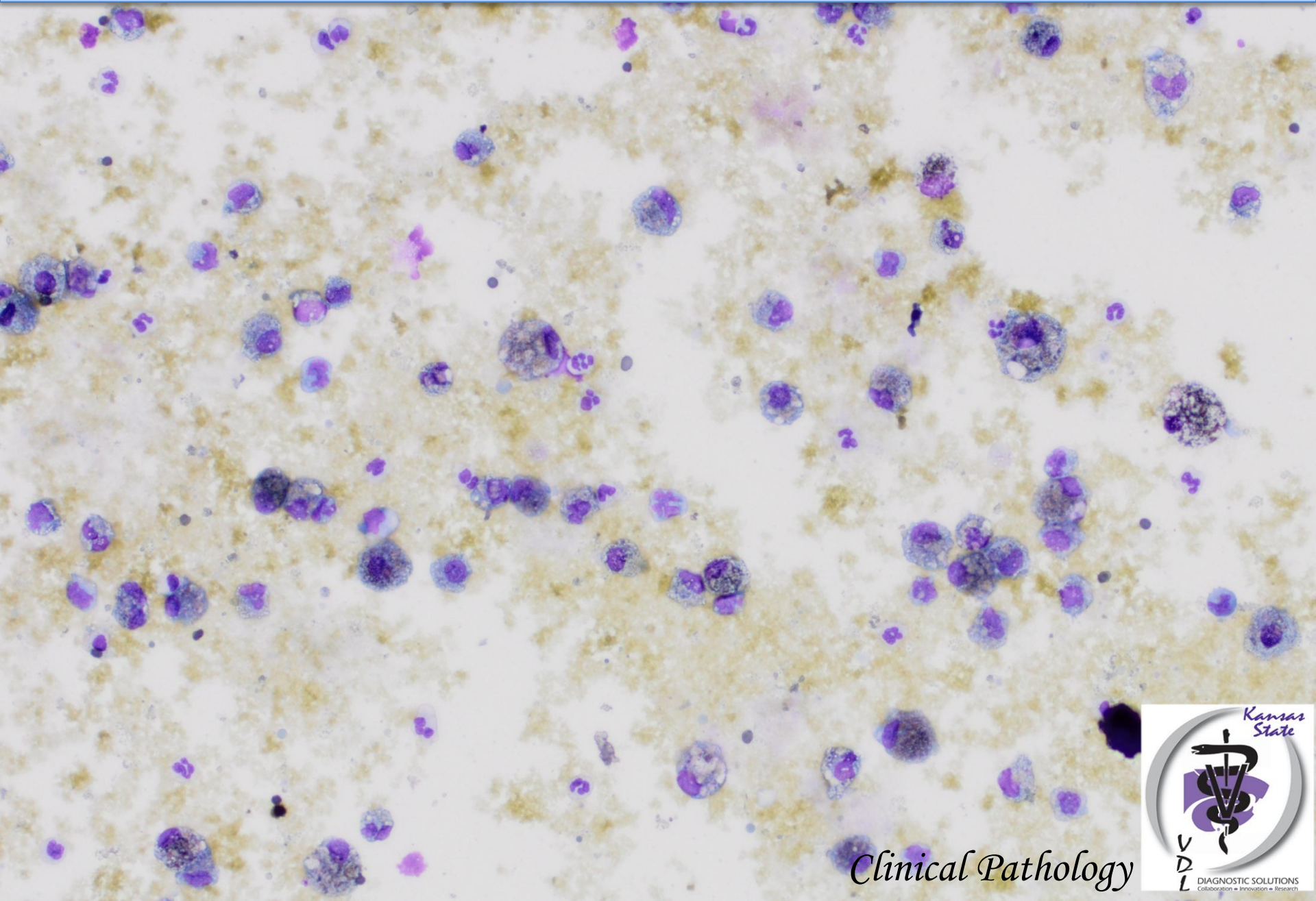
Total nucleated cell count: 1300 / μ L

Fluid color: **Yellow**

Hematocrit: < 3%

Protein: 2.9 g/dL

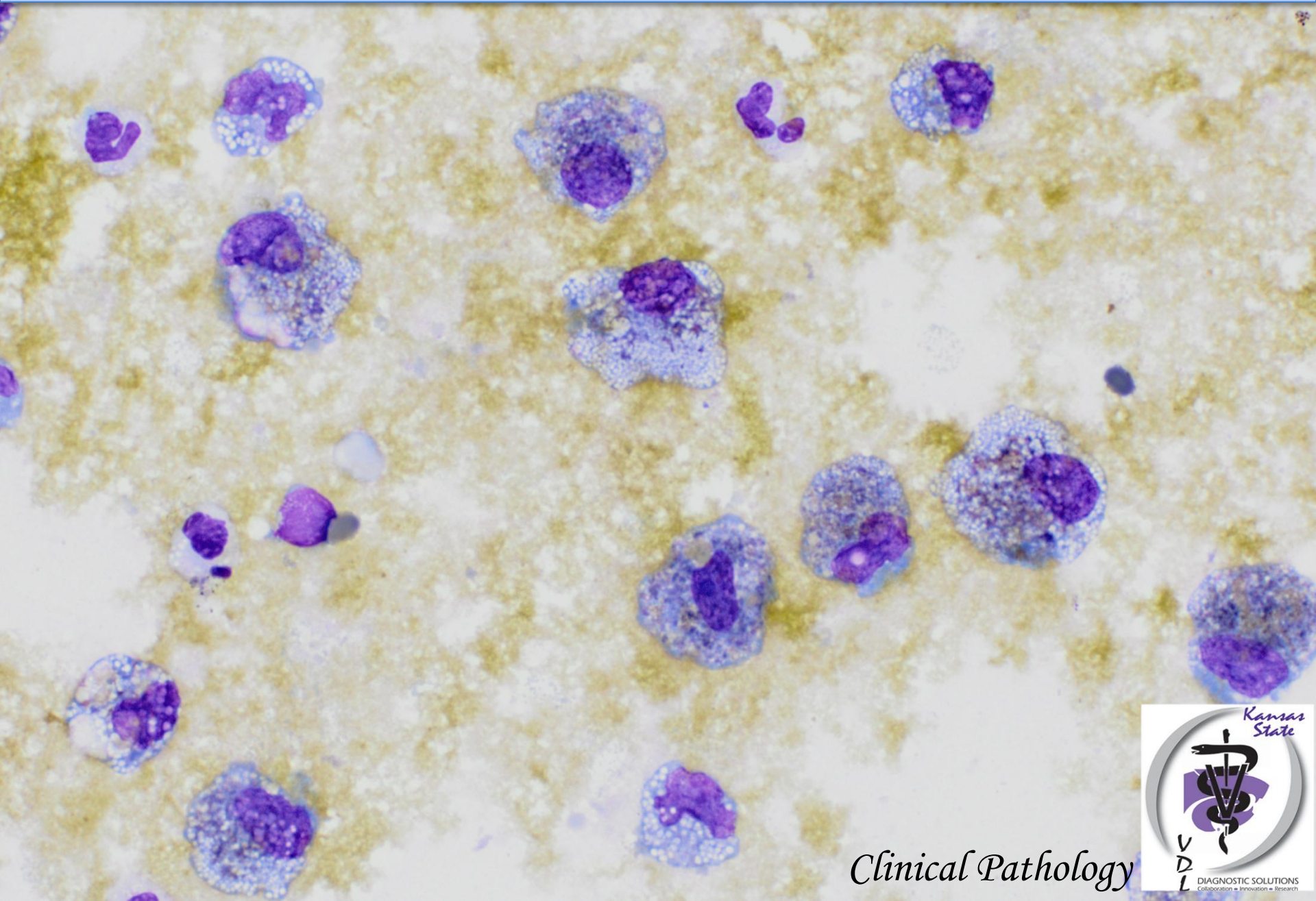
Peritoneal fluid from a 2-year-old mixed breed dog



Clinical Pathology



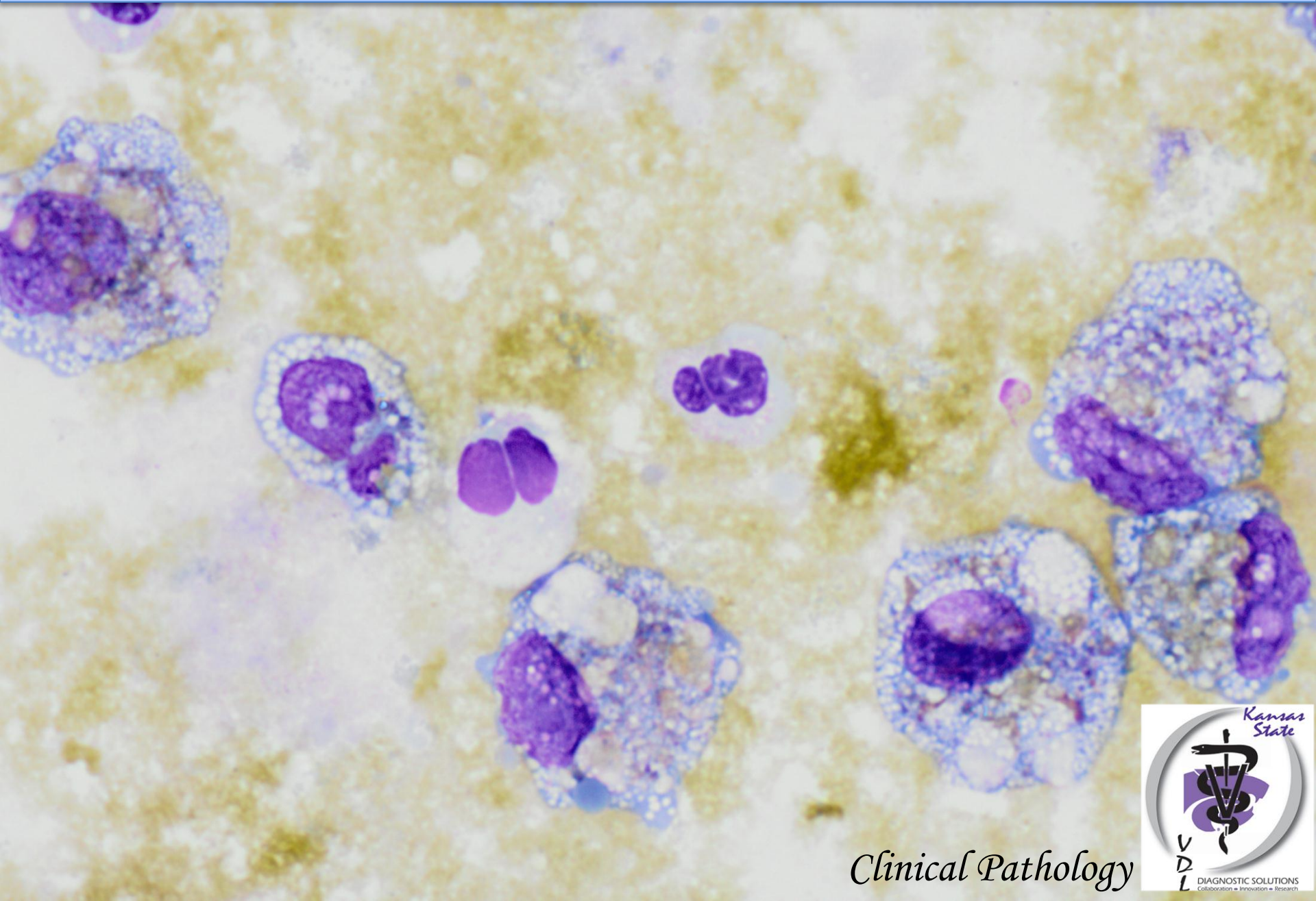
Peritoneal fluid from a 2-year-old mixed breed dog



Clinical Pathology



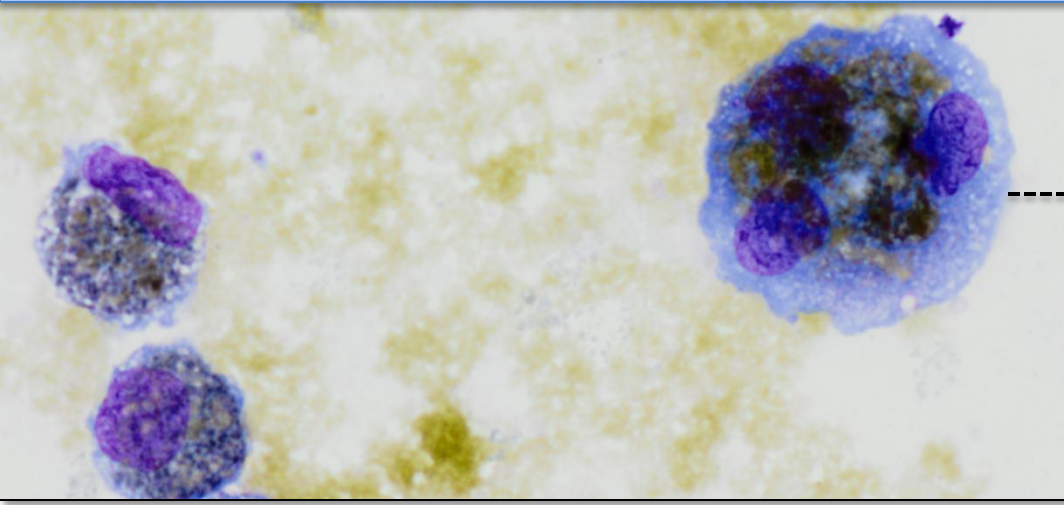
Peritoneal fluid from a 2-year-old mixed breed dog



Clinical Pathology

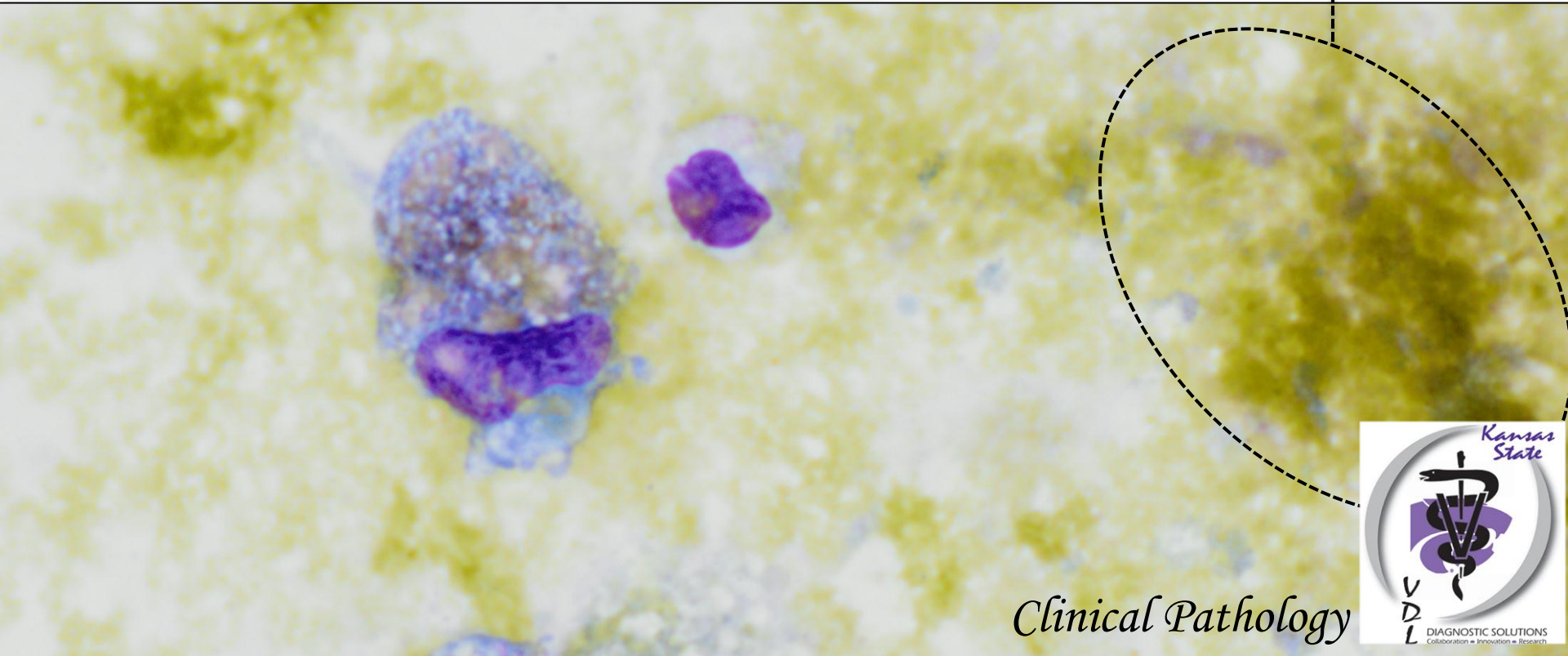


Peritoneal fluid from a 2-year-old mixed breed dog



Macrophages with
pigment

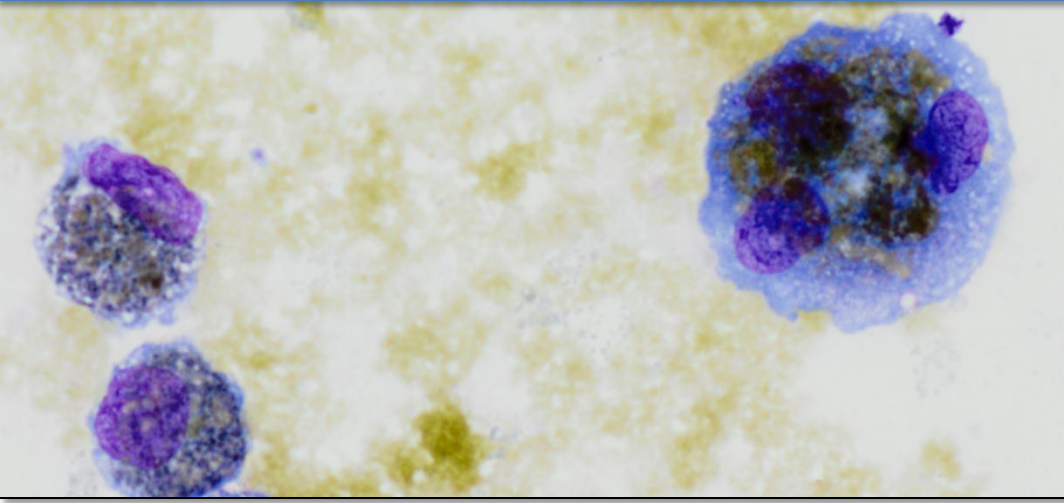
Yellowish green
pigment



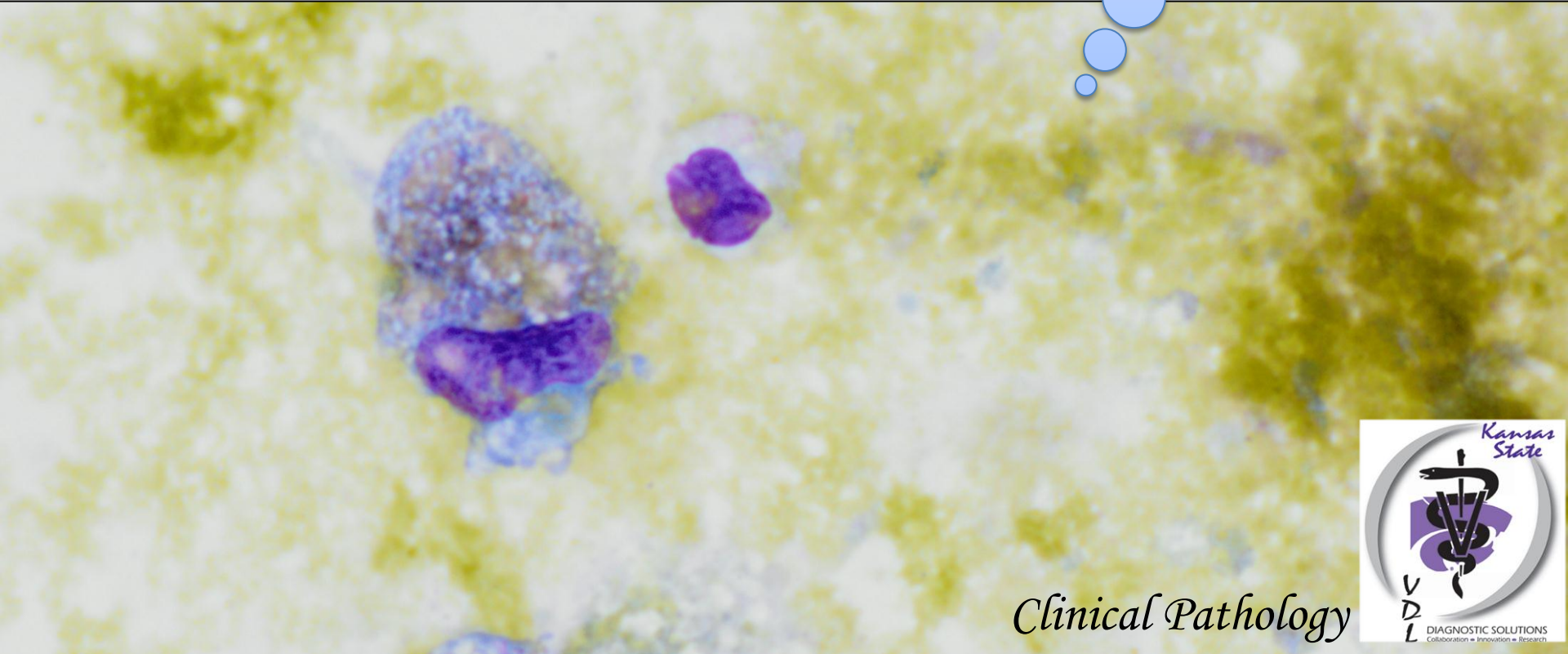
Clinical Pathology



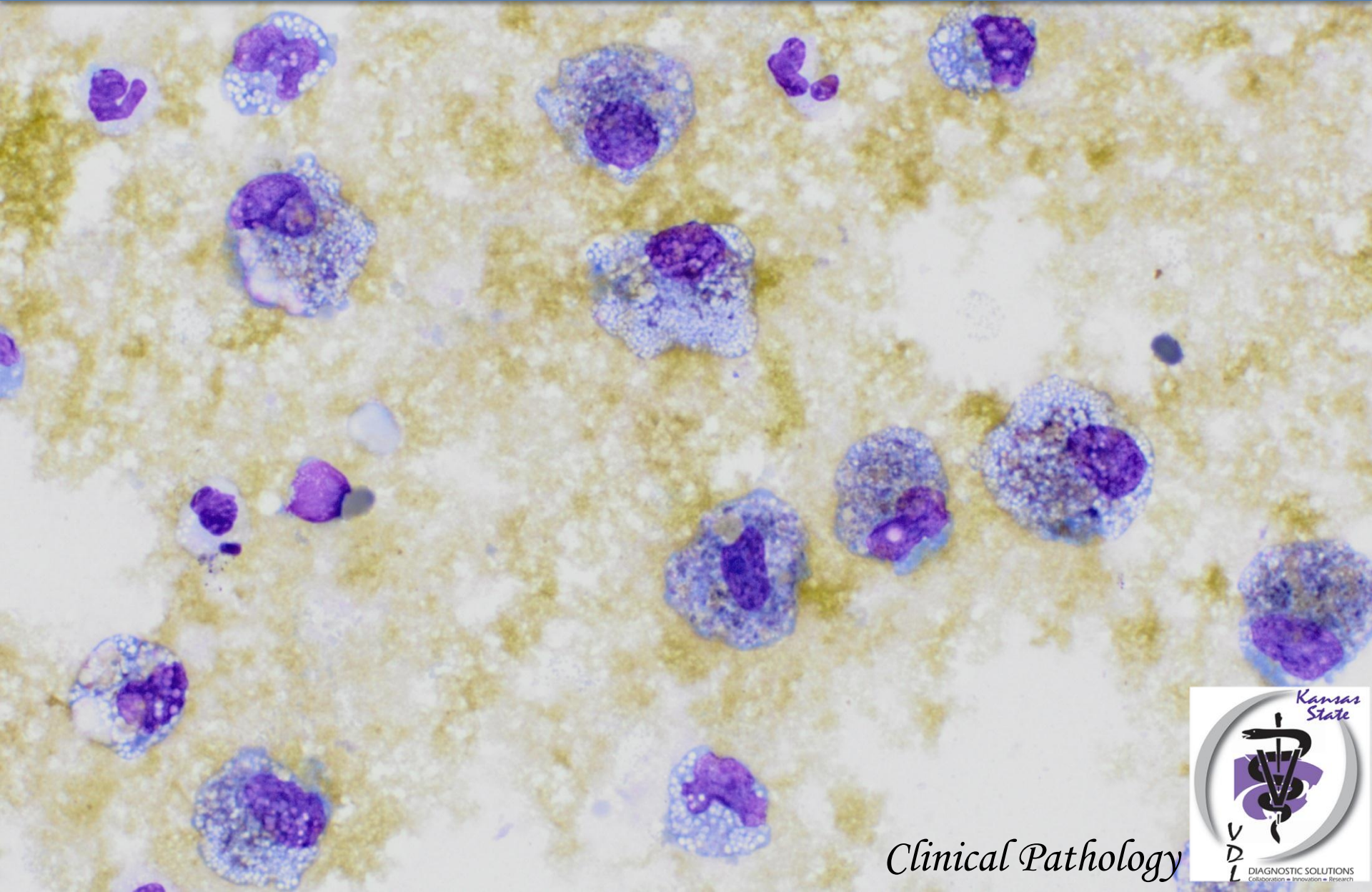
Peritoneal fluid from a 2-year-old mixed breed dog



HINT:
Total bilirubin
in the
peritoneal fluid
was 17.7 mg/dL



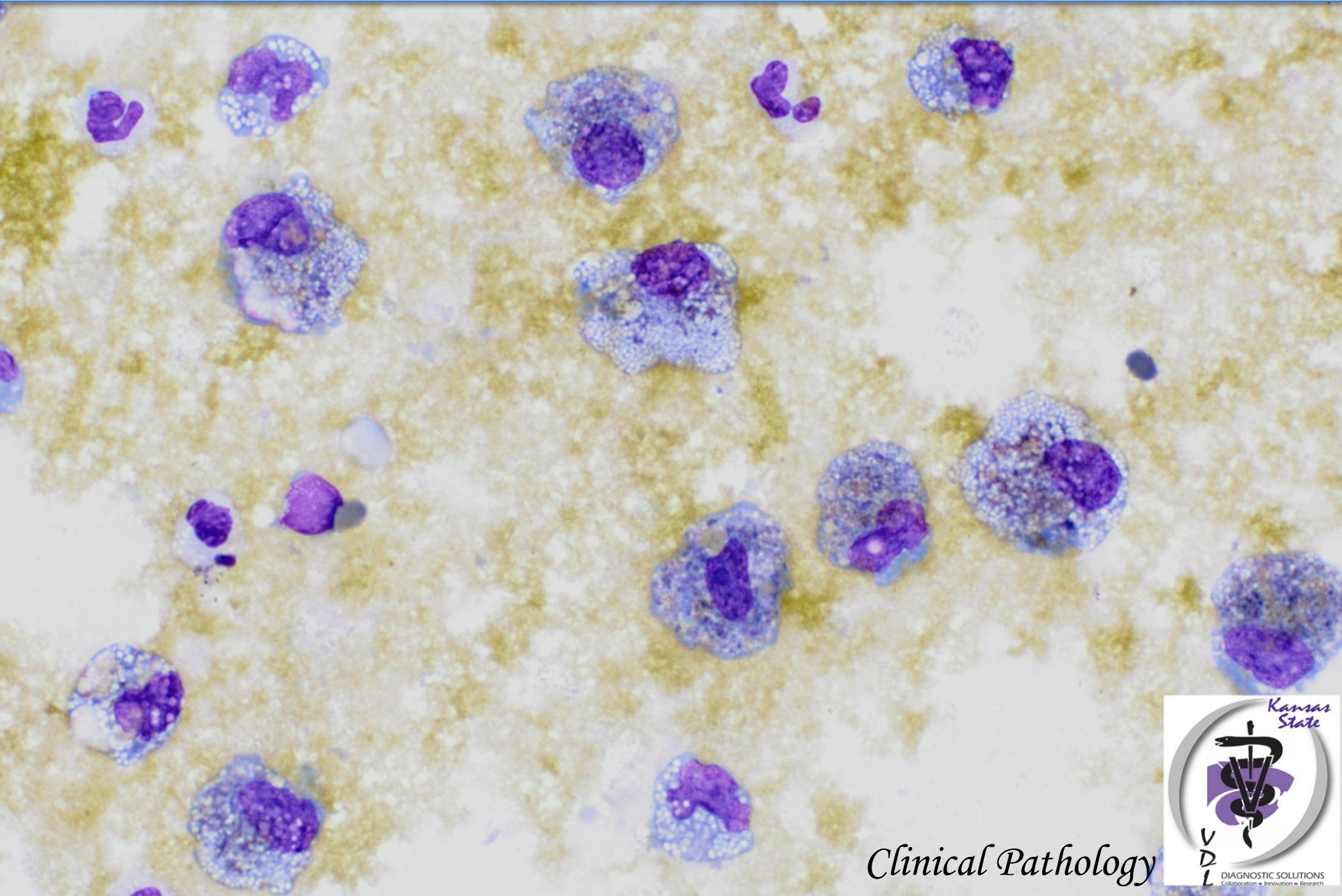
DIAGNOSIS



Clinical Pathology



Bilious effusion



Clinical Pathology

