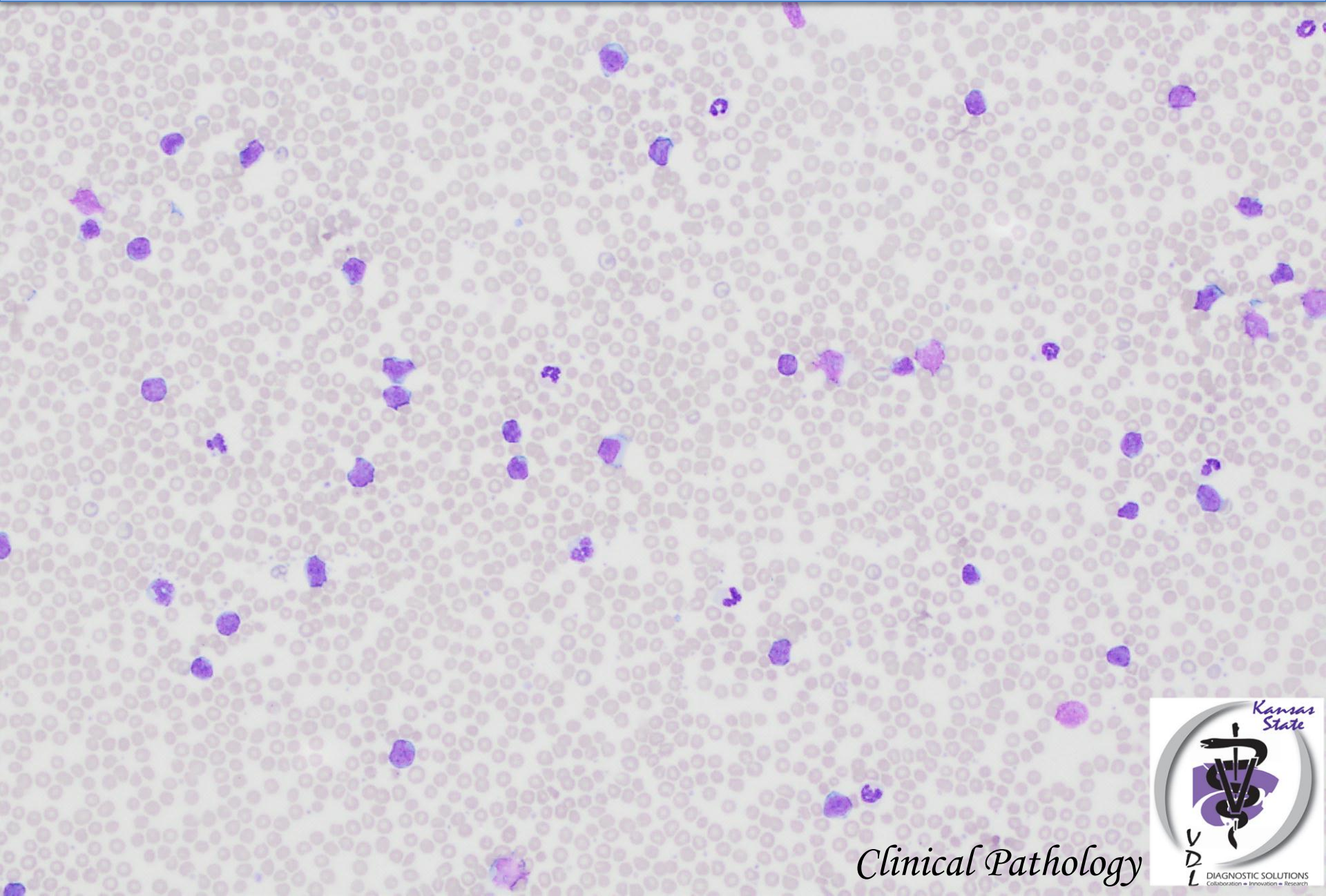


Blood smear from a 6-year-old dog

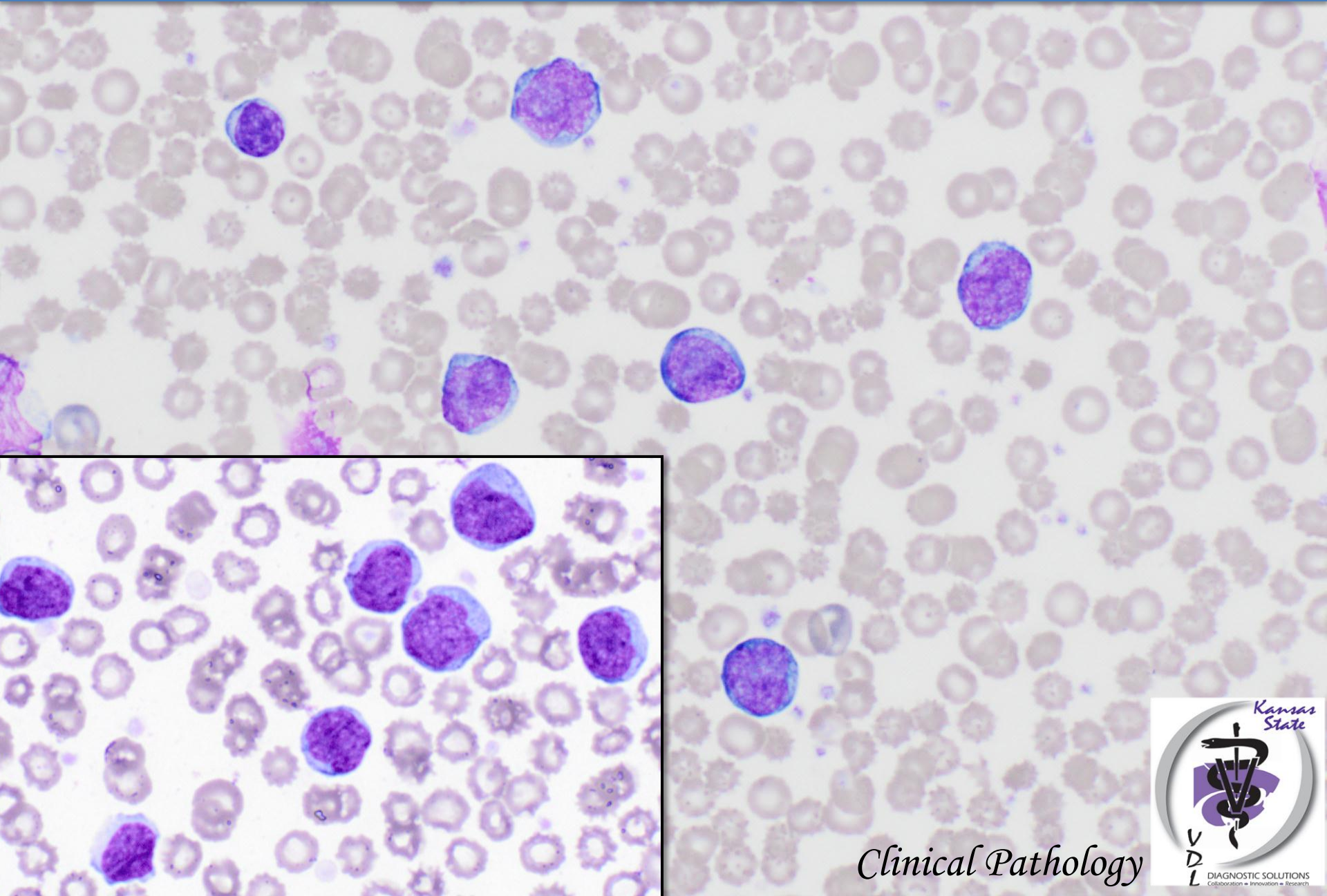
Blood smear from a 6-year-old dog



Clinical Pathology



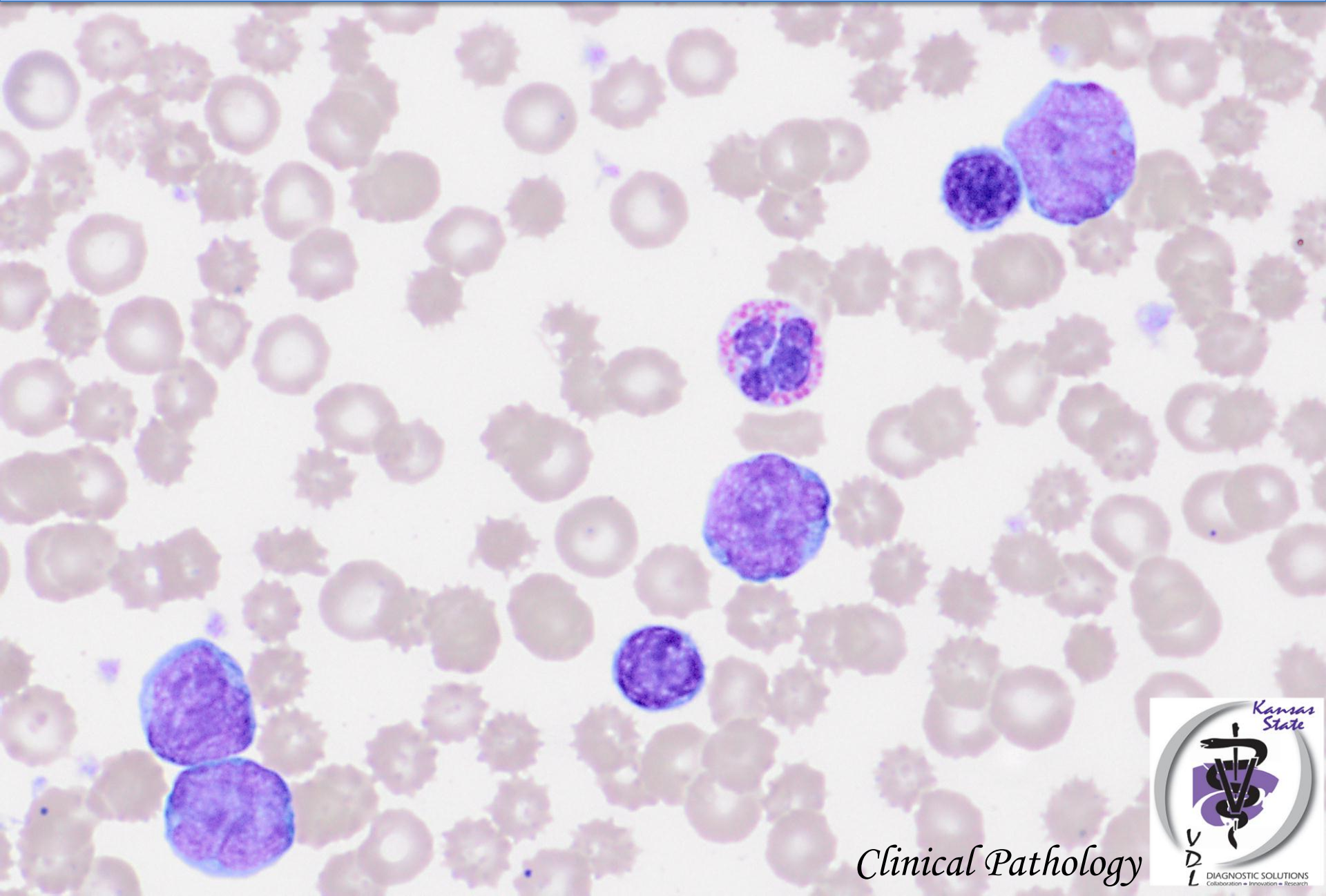
Blood smear from a 6-year-old dog



Clinical Pathology



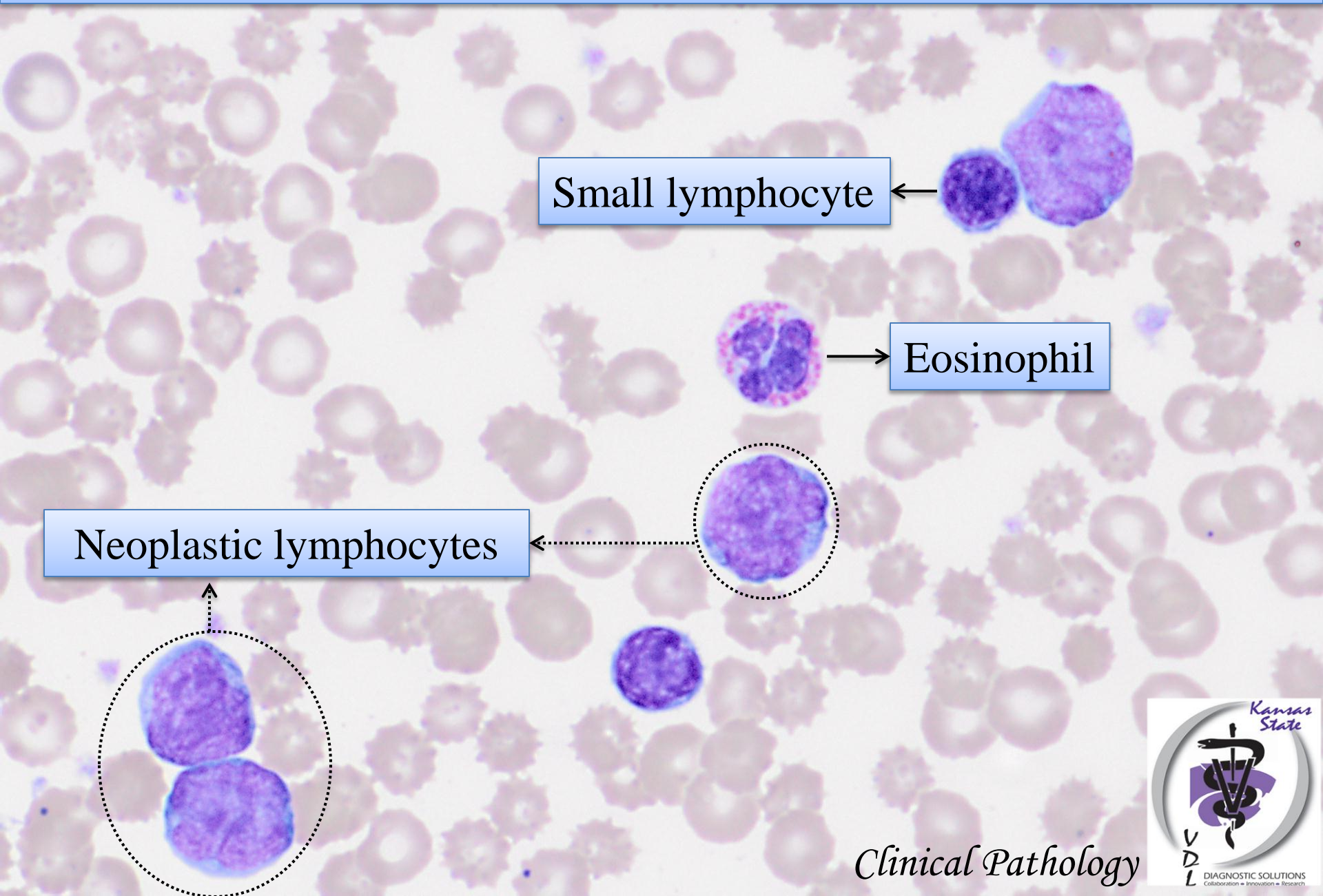
Blood smear from a 6-year-old dog



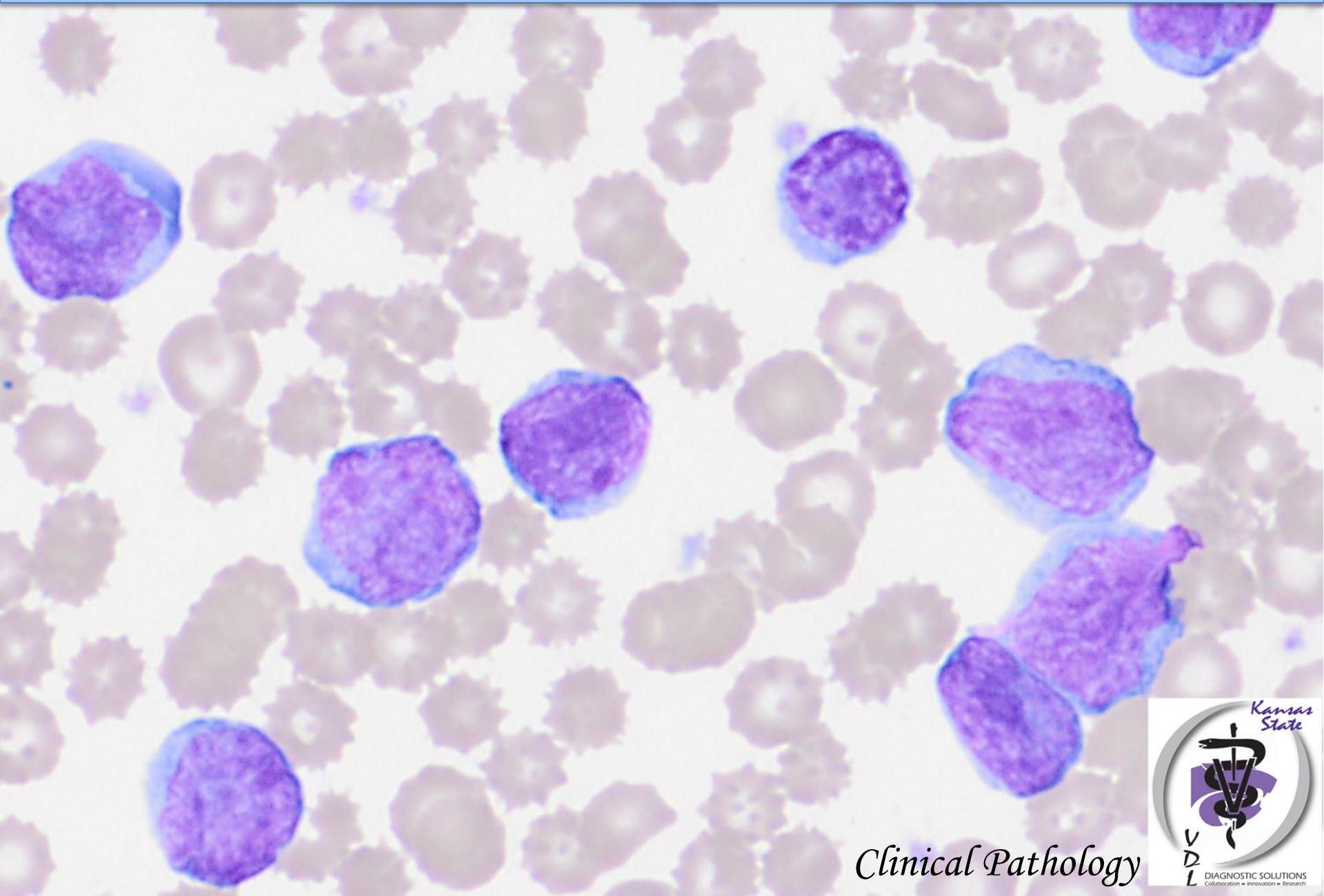
Clinical Pathology



Blood smear from a 6-year-old dog



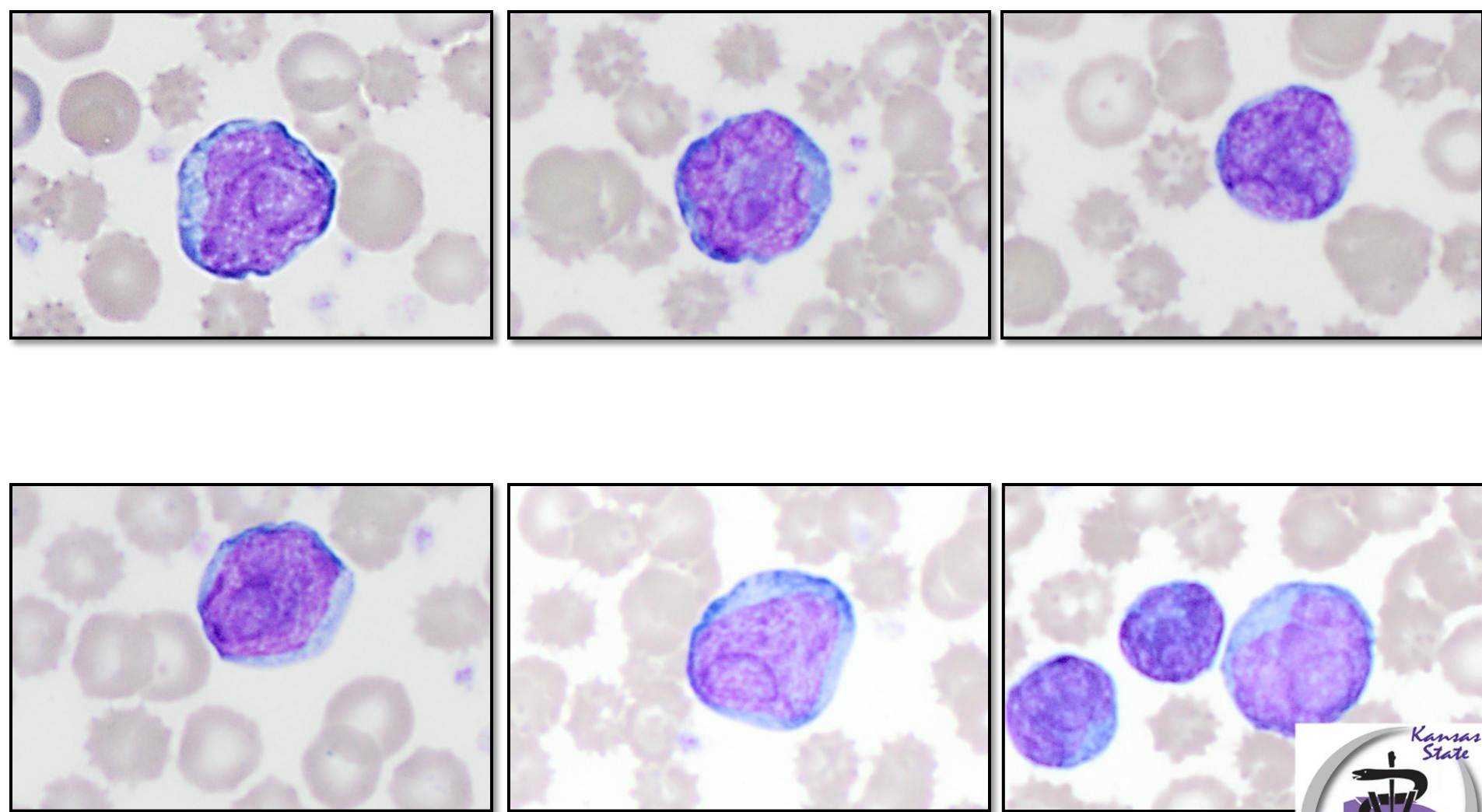
Total leukocyte count: 67,000 cells/ μ L



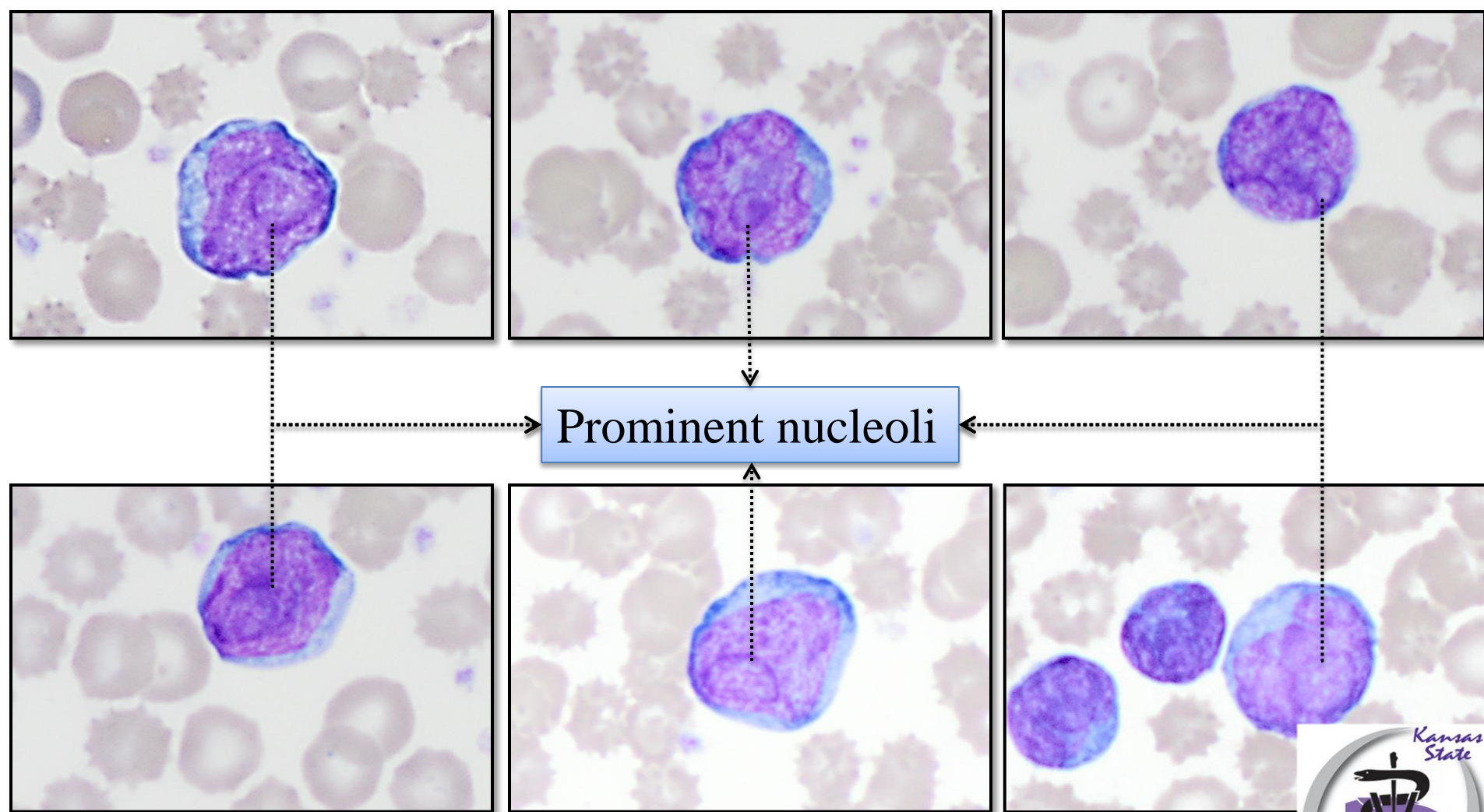
Clinical Pathology



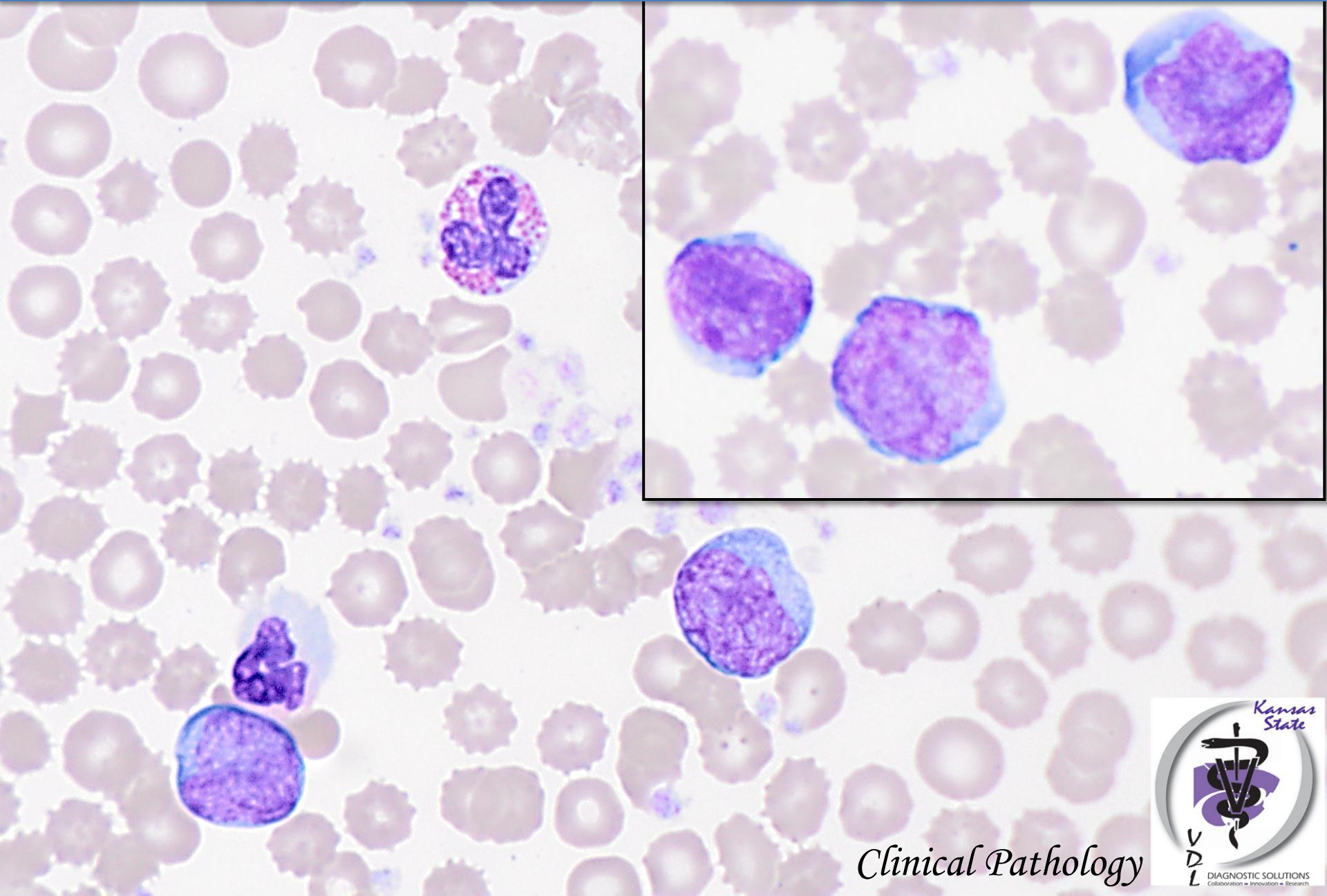
Blood smear from a 6-year-old dog



Neoplastic cells



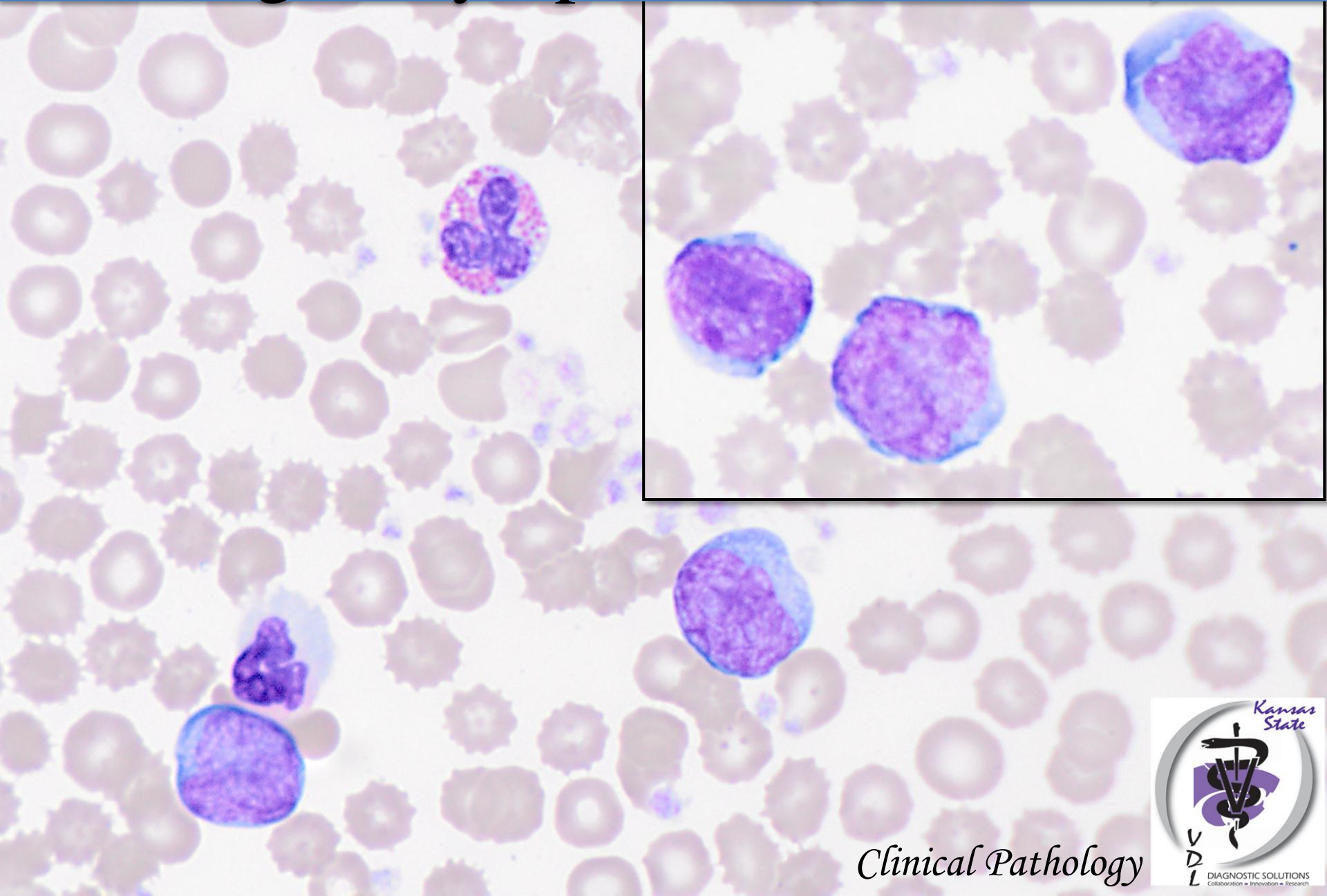
DIAGNOSIS



Clinical Pathology



Stage V lymphoma (Leukemia)



Clinical Pathology

