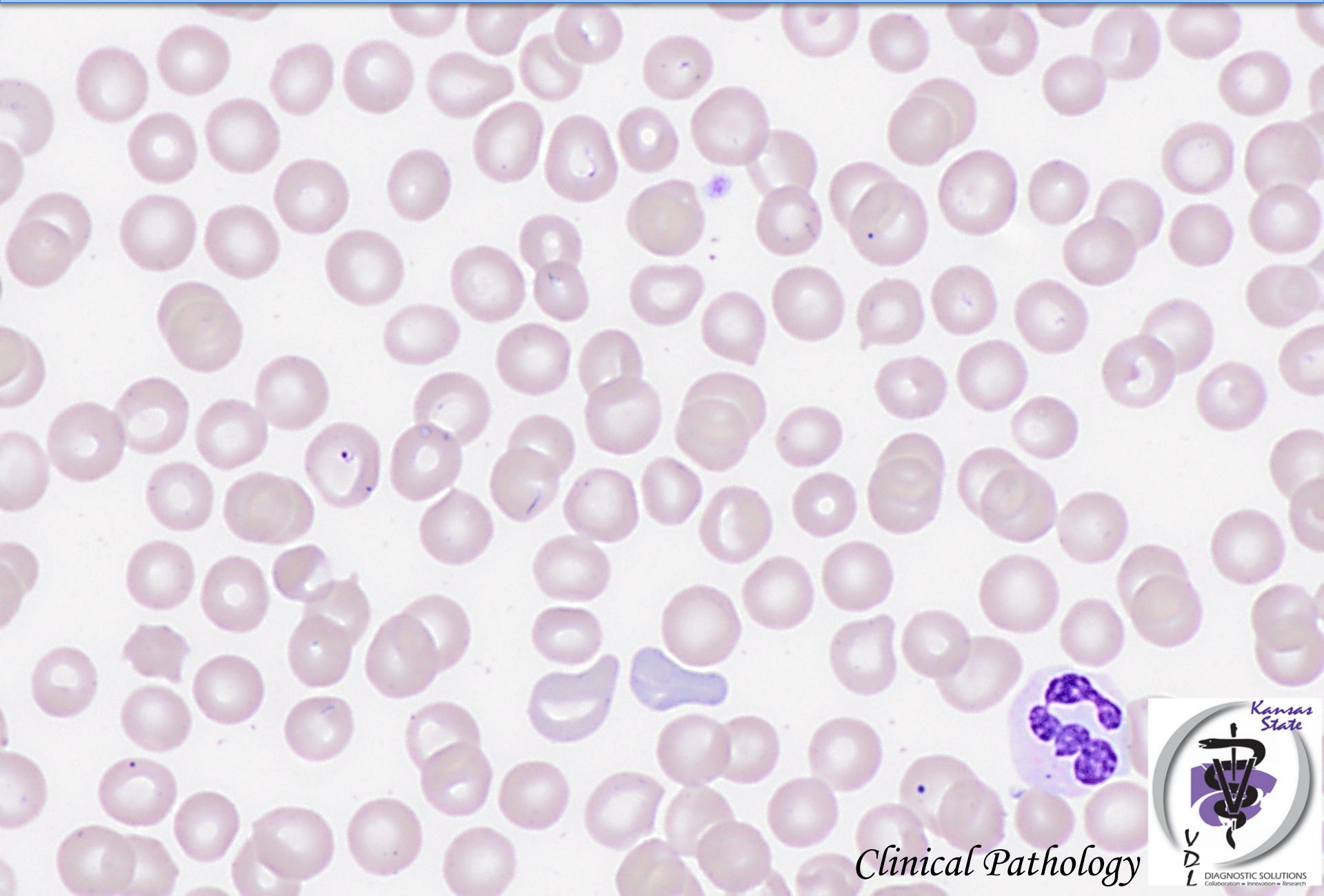


Blood smear from a 5-year-old dog

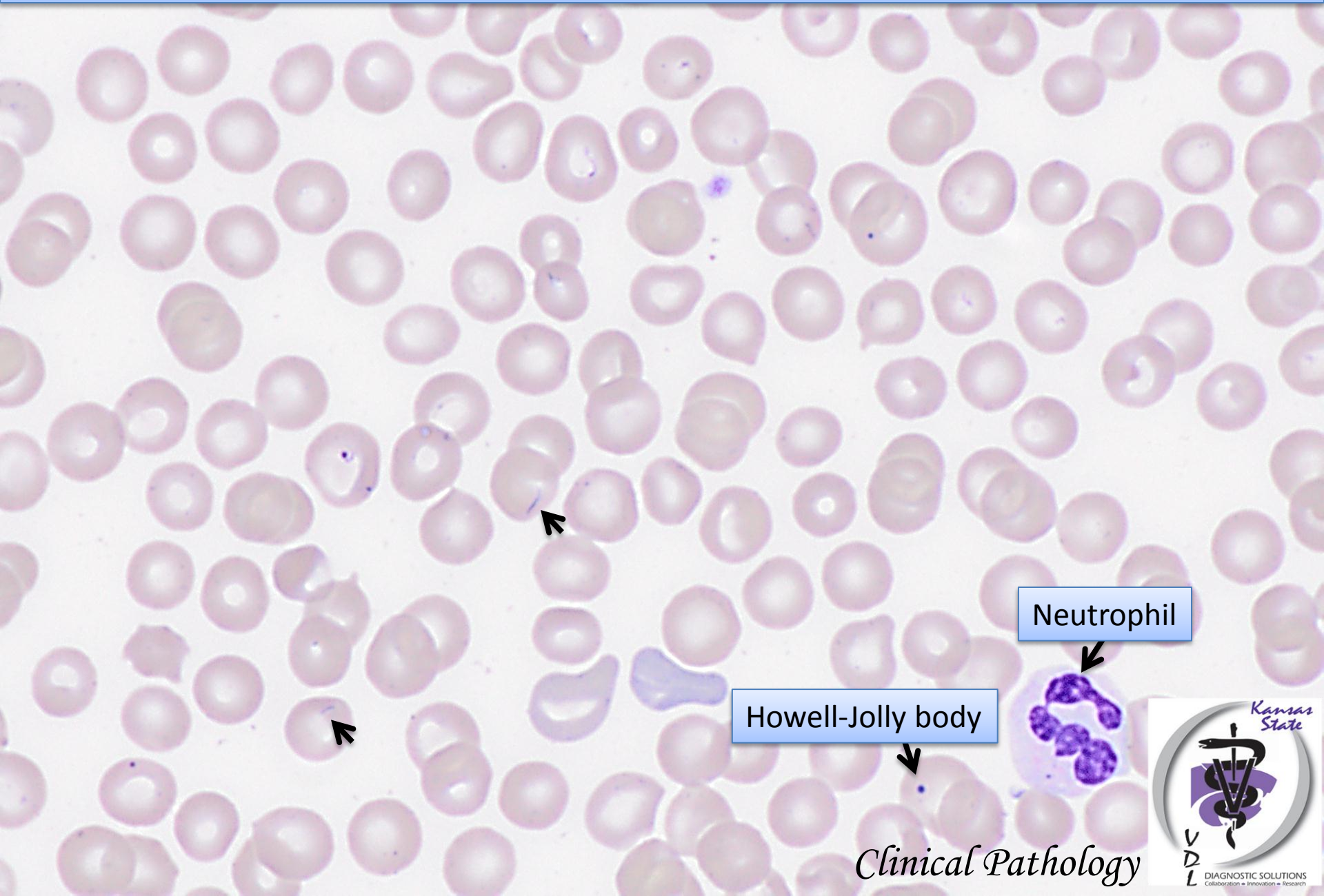
Blood smear from a 5-year-old dog



Clinical Pathology



Blood smear from a 5-year-old dog



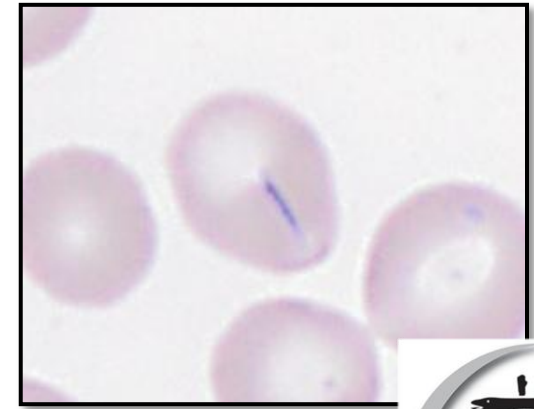
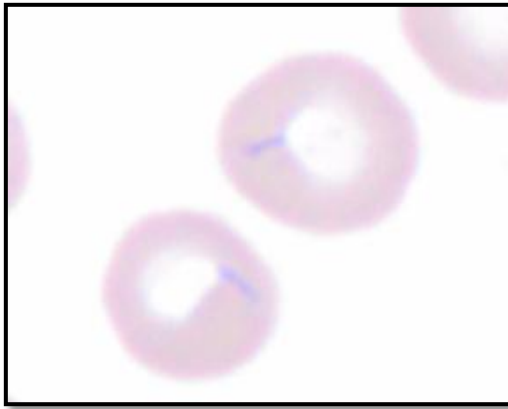
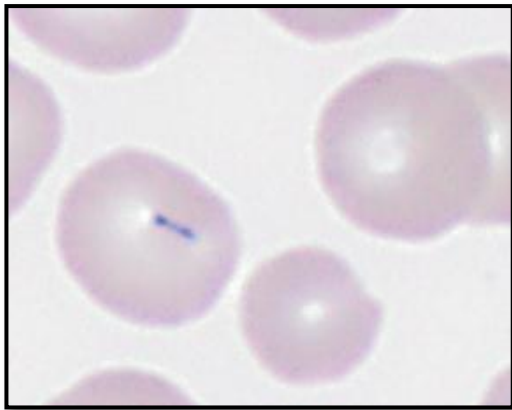
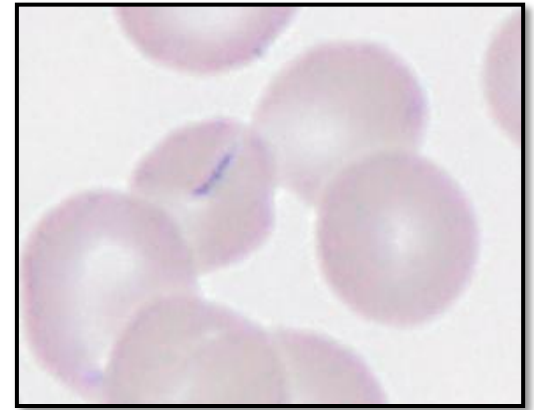
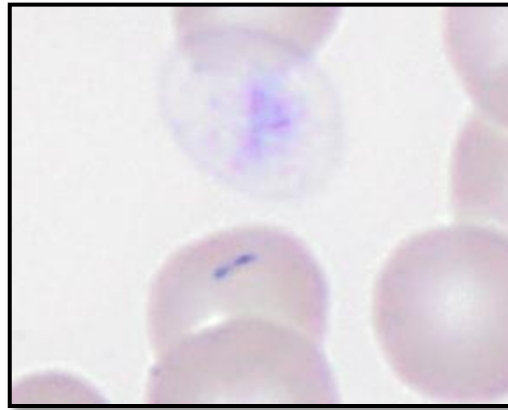
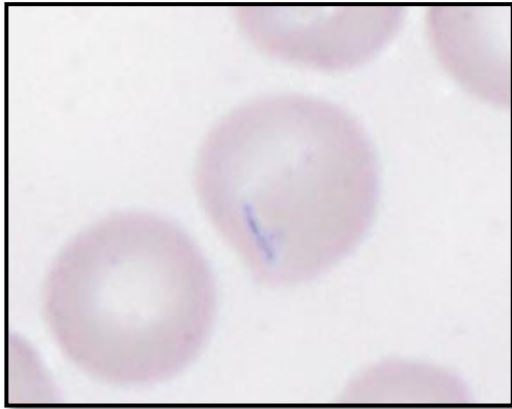
Neutrophil

Howell-Jolly body

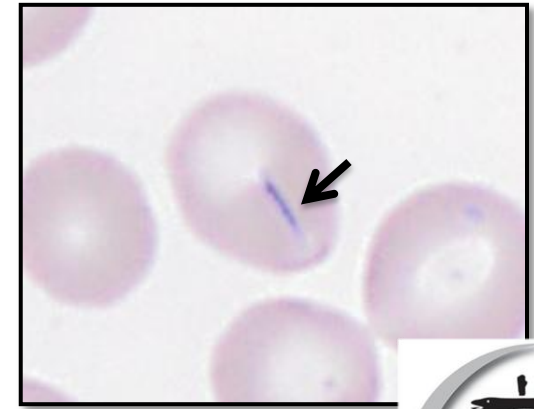
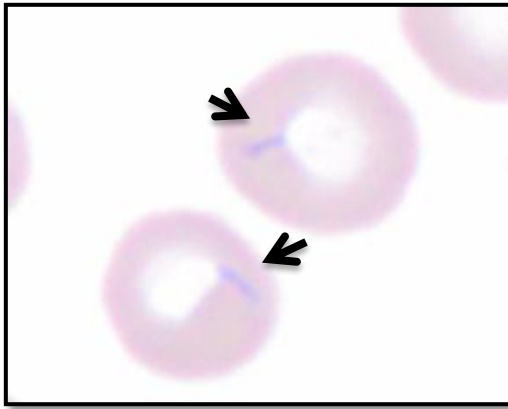
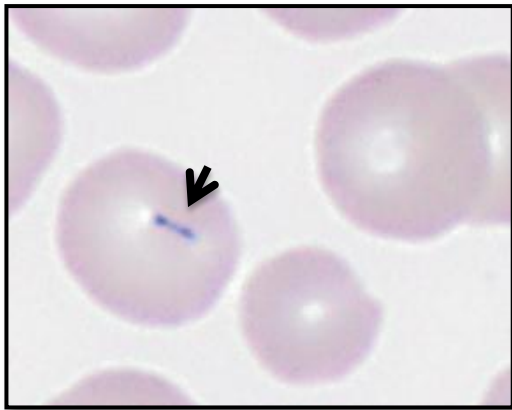
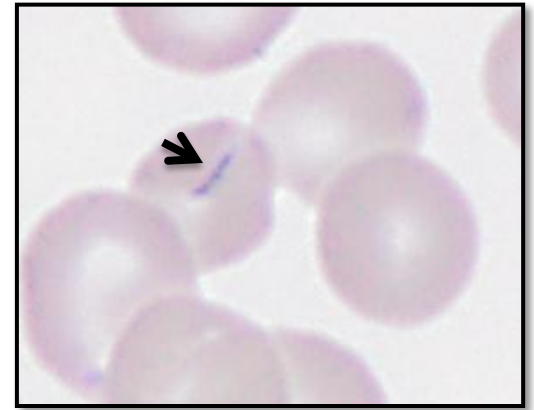
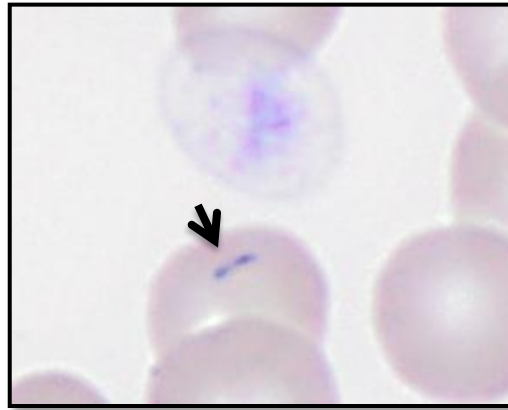
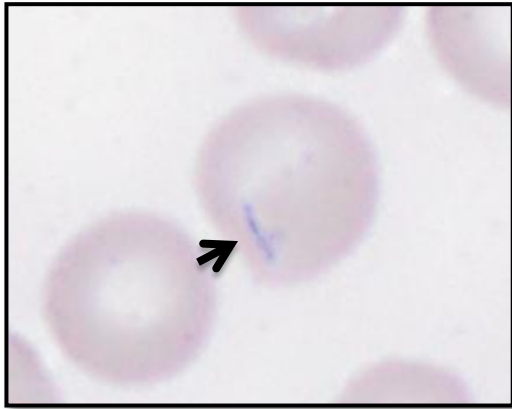
Clinical Pathology



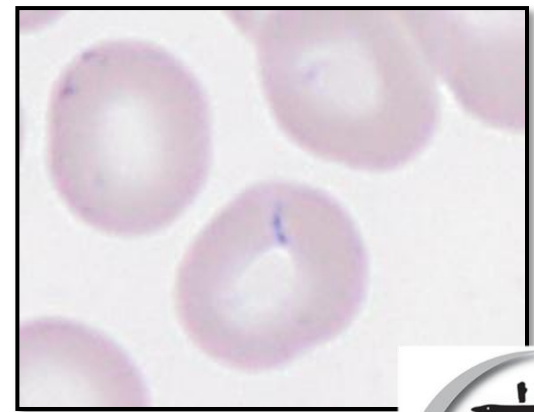
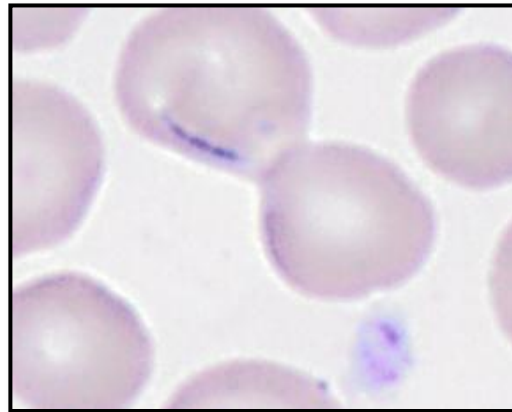
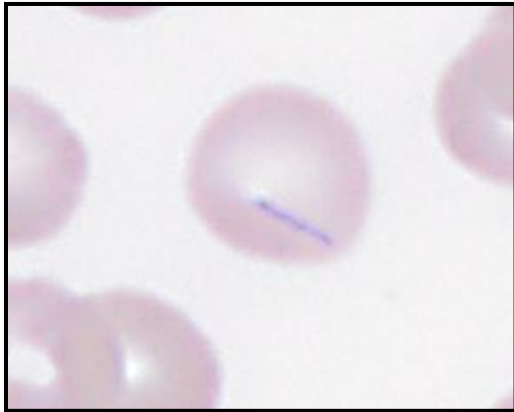
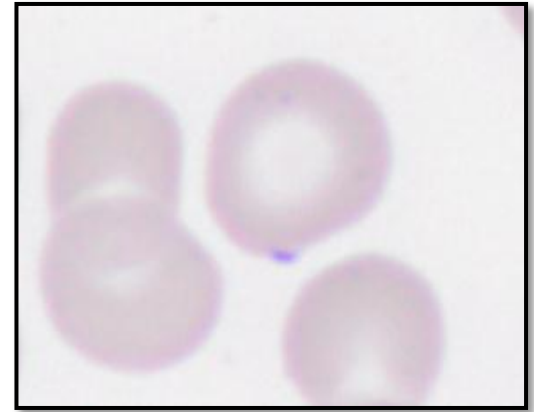
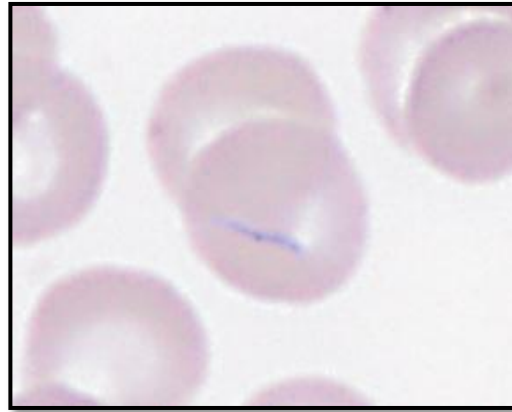
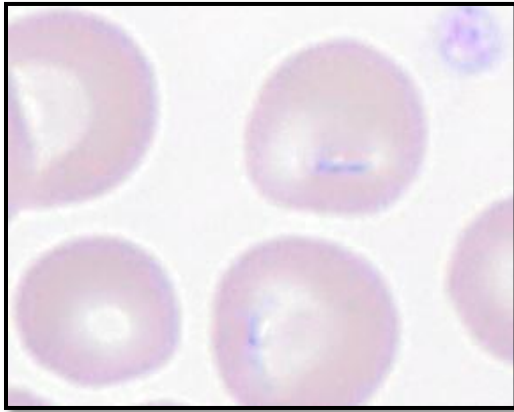
Chains of cocci present on RBCs



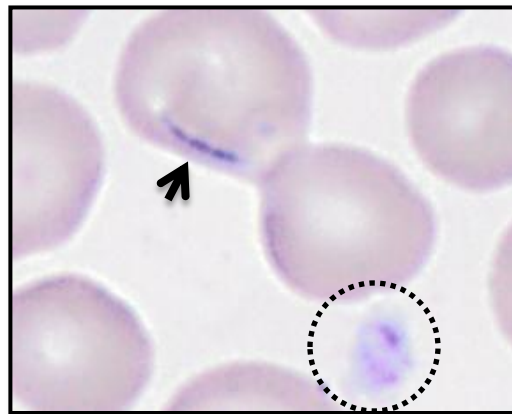
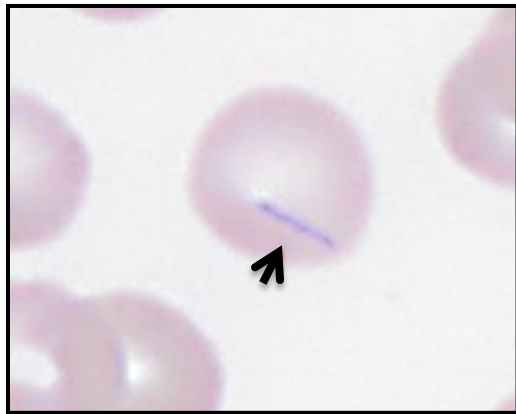
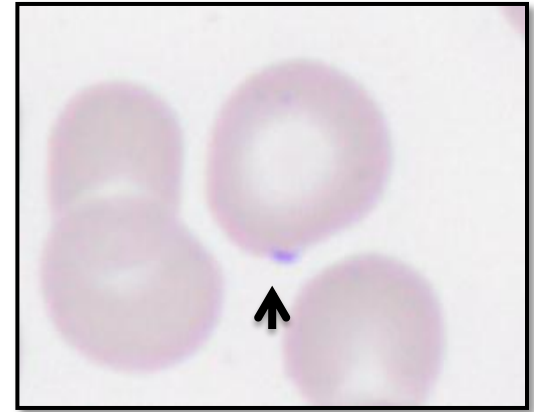
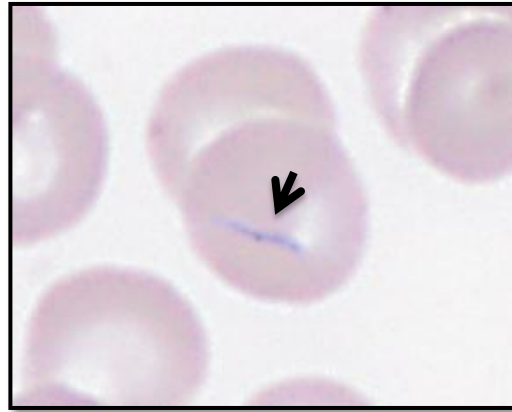
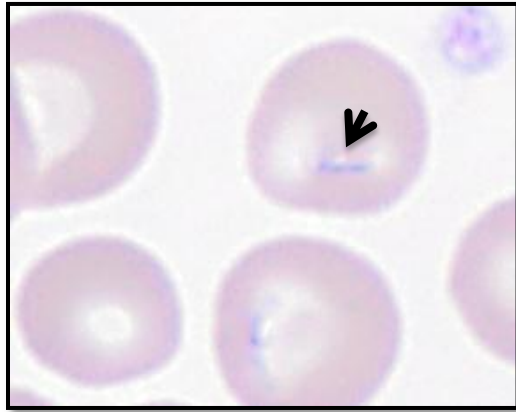
Chains of cocci present on RBCs



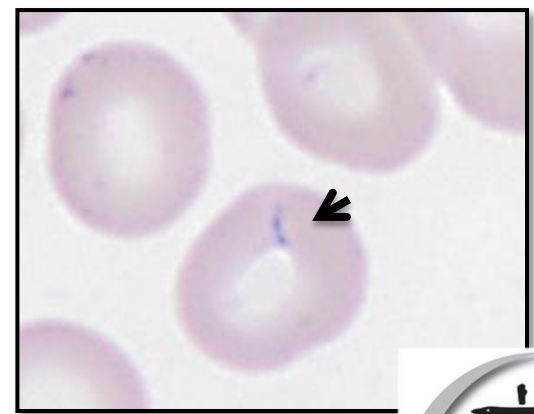
Chains of cocci present on RBCs



Chains of cocci present on RBCs



Platelet



Clinical Pathology

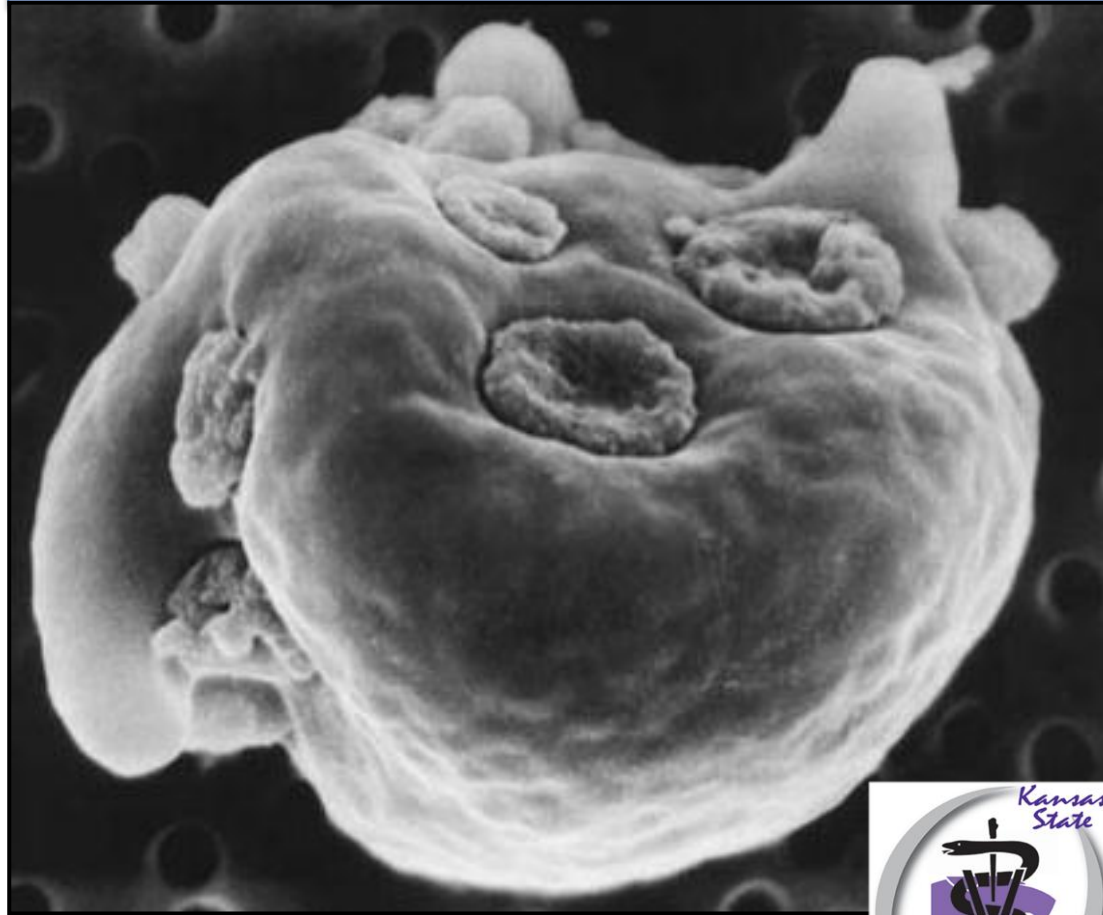
Scanning electron micrographs

Sheep erythrocyte with several *Mycoplasma ovis* on the RBC surface



Int J of Syst and Evol Microbiol 2004, 54, 365–371

Pig erythrocyte with *Mycoplasma haemosuis* within shallow depressions on the surface of a RBC

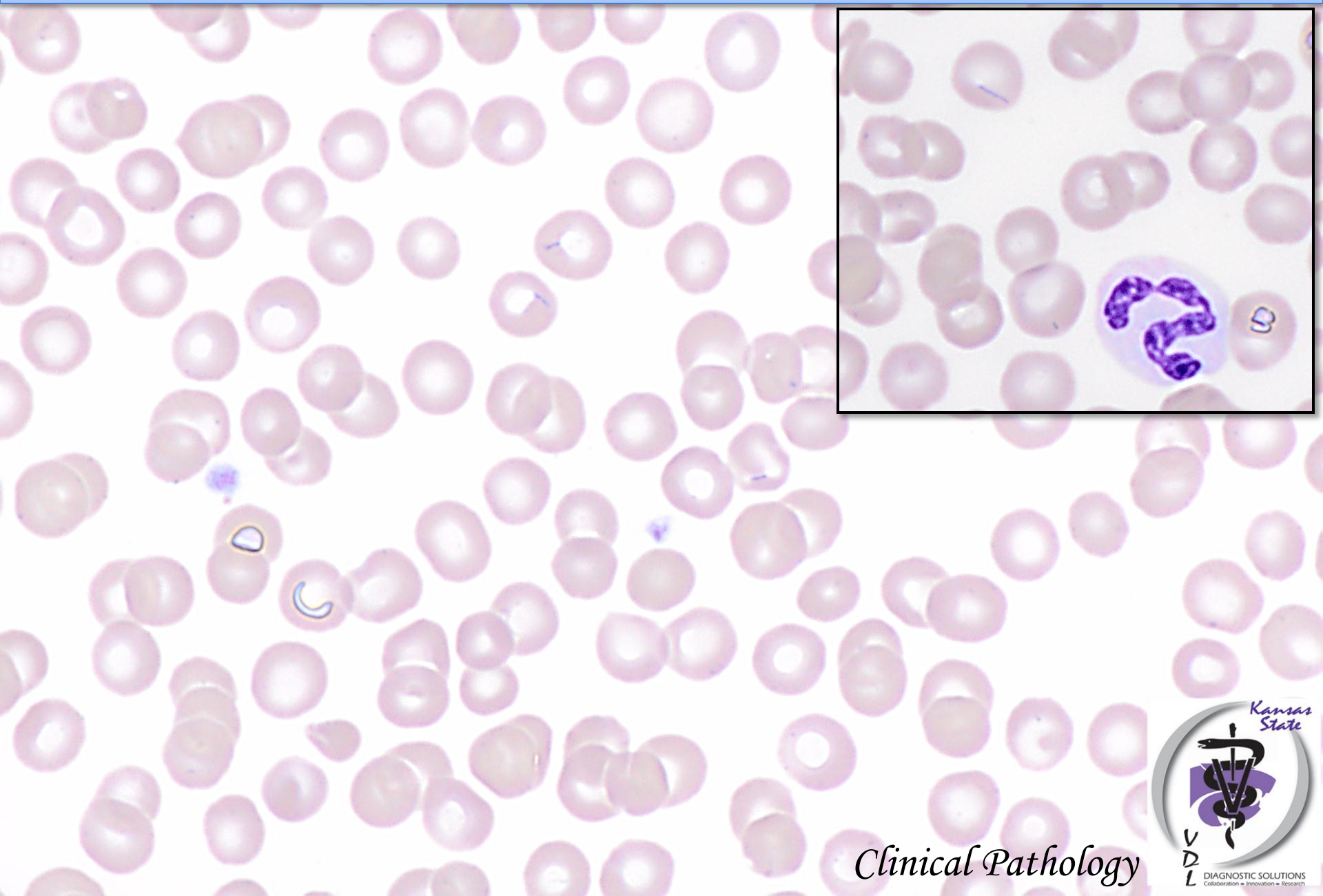


Veterinary Clinical pathology 2004, 33, 1, 2-13

Clinical Pathology



DIAGNOSIS



Clinical Pathology



Mycoplasma sp. (*haemocanis*) infection

