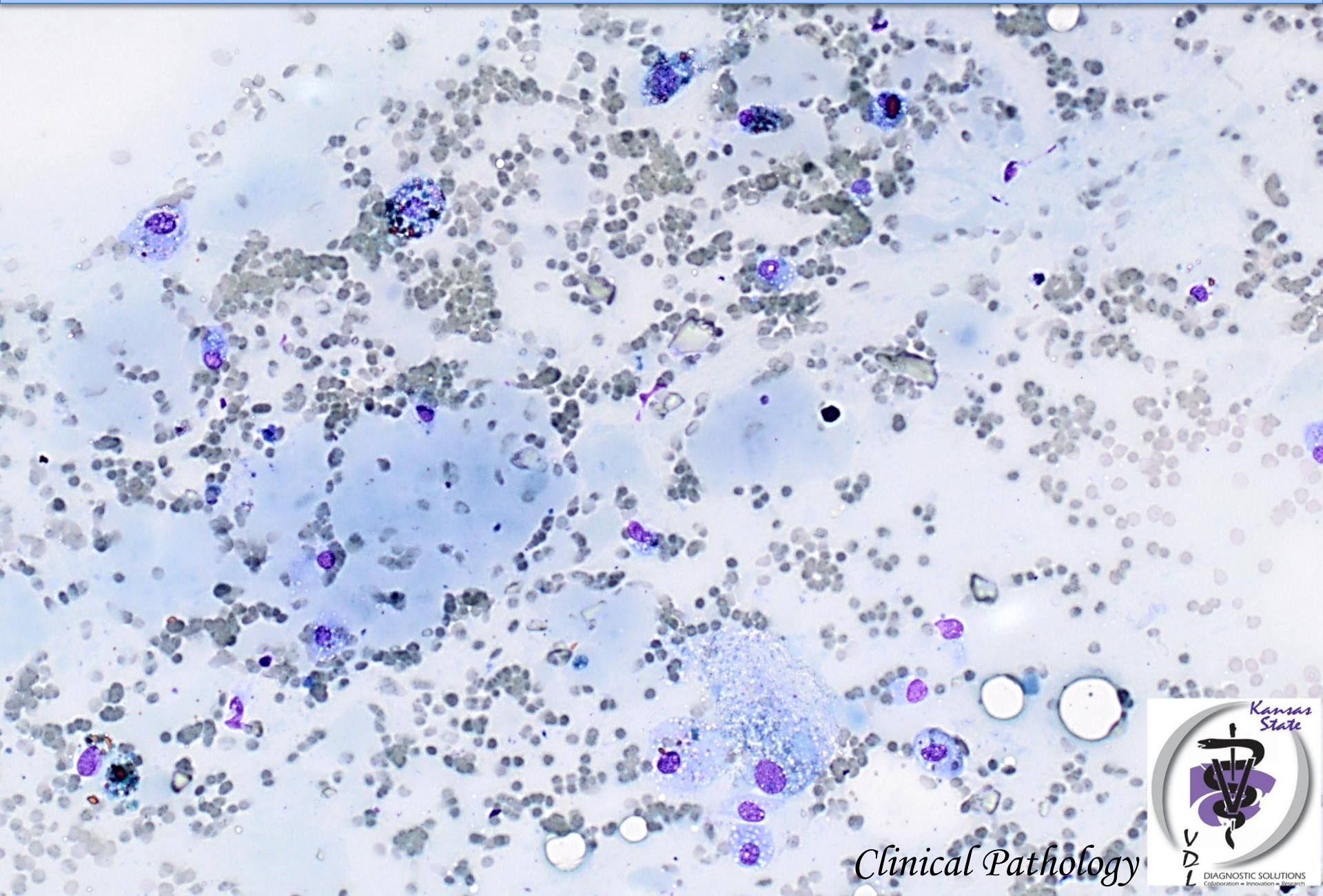


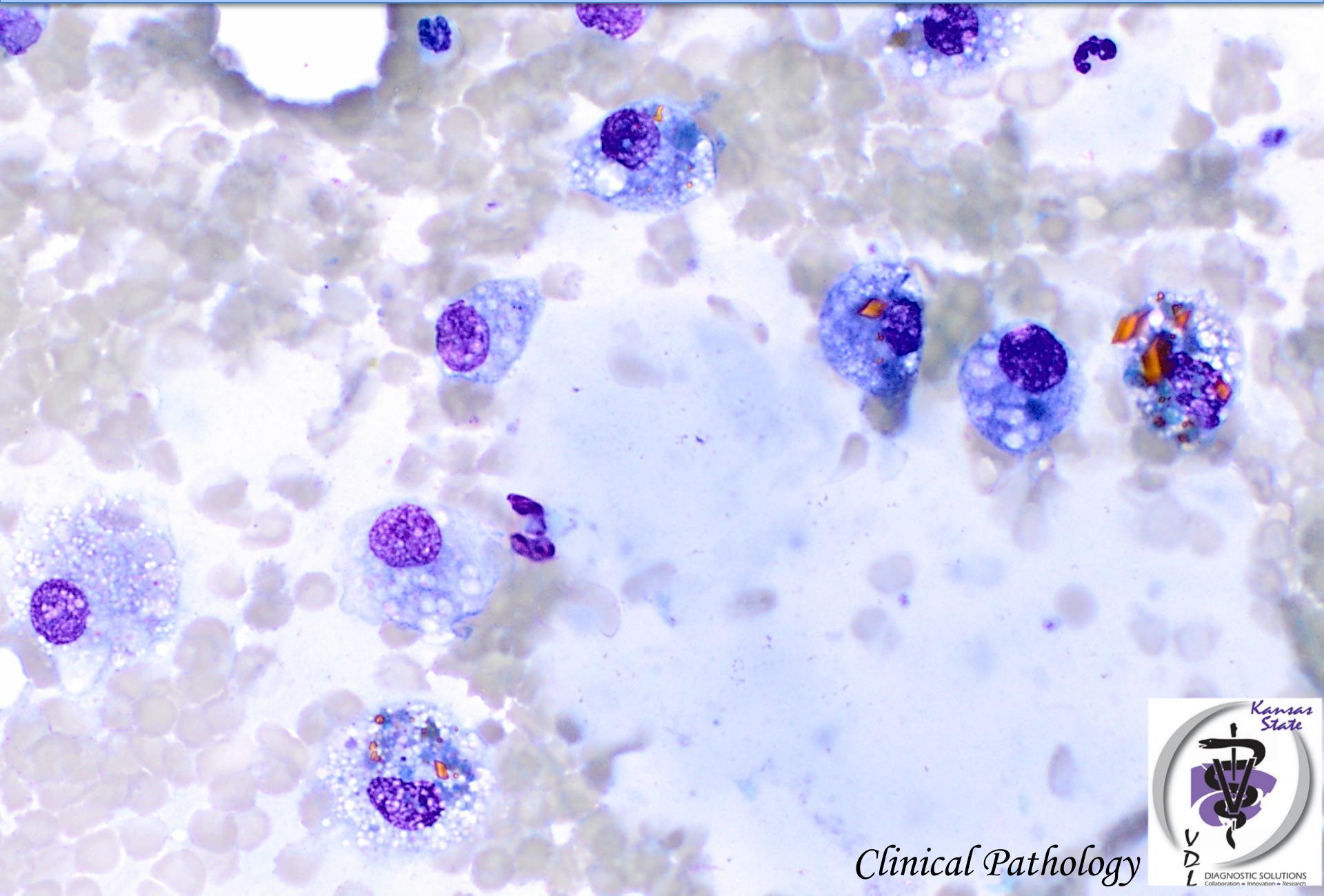
Submandibular mass in a dog



Clinical Pathology



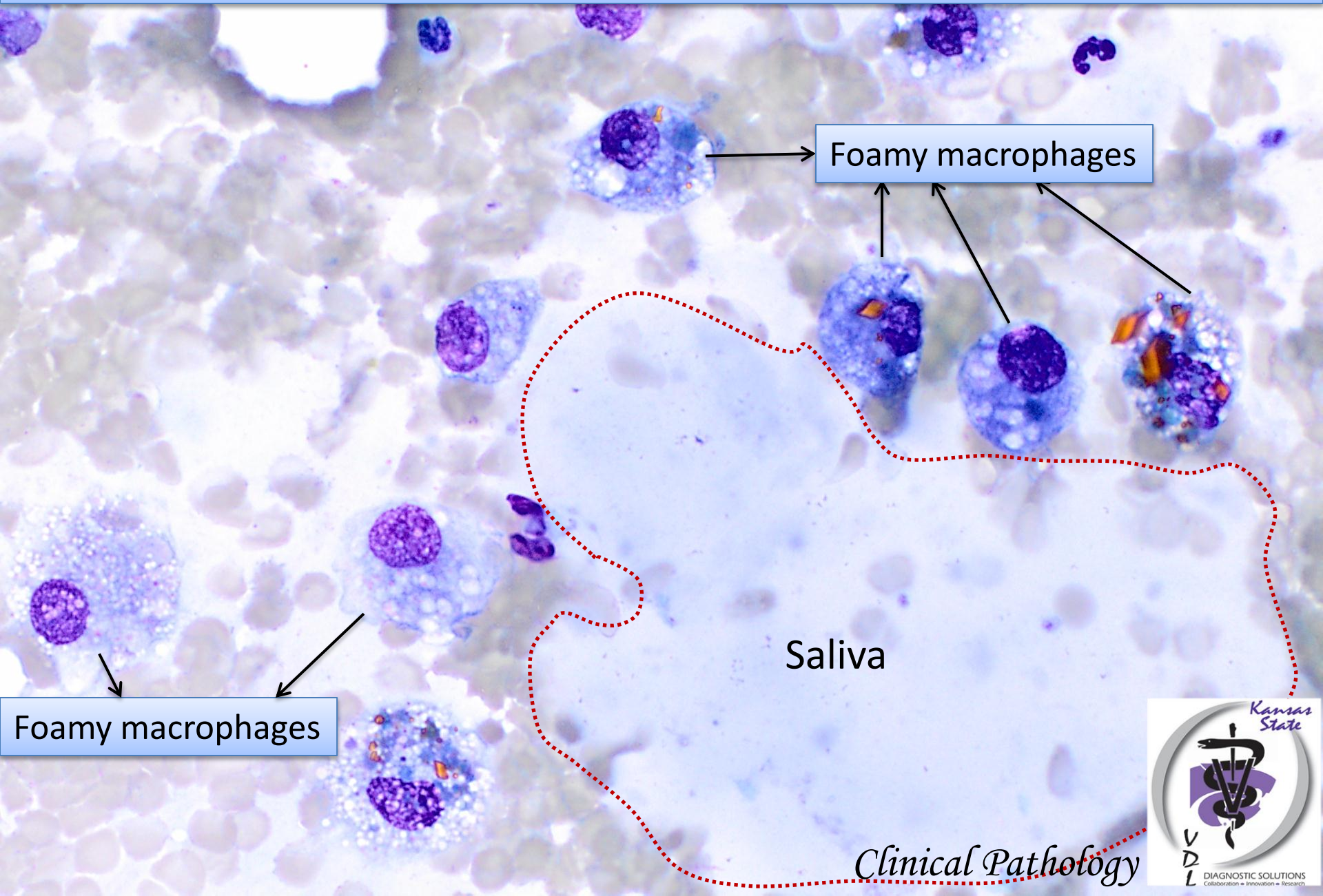
Submandibular mass in a dog



Clinical Pathology



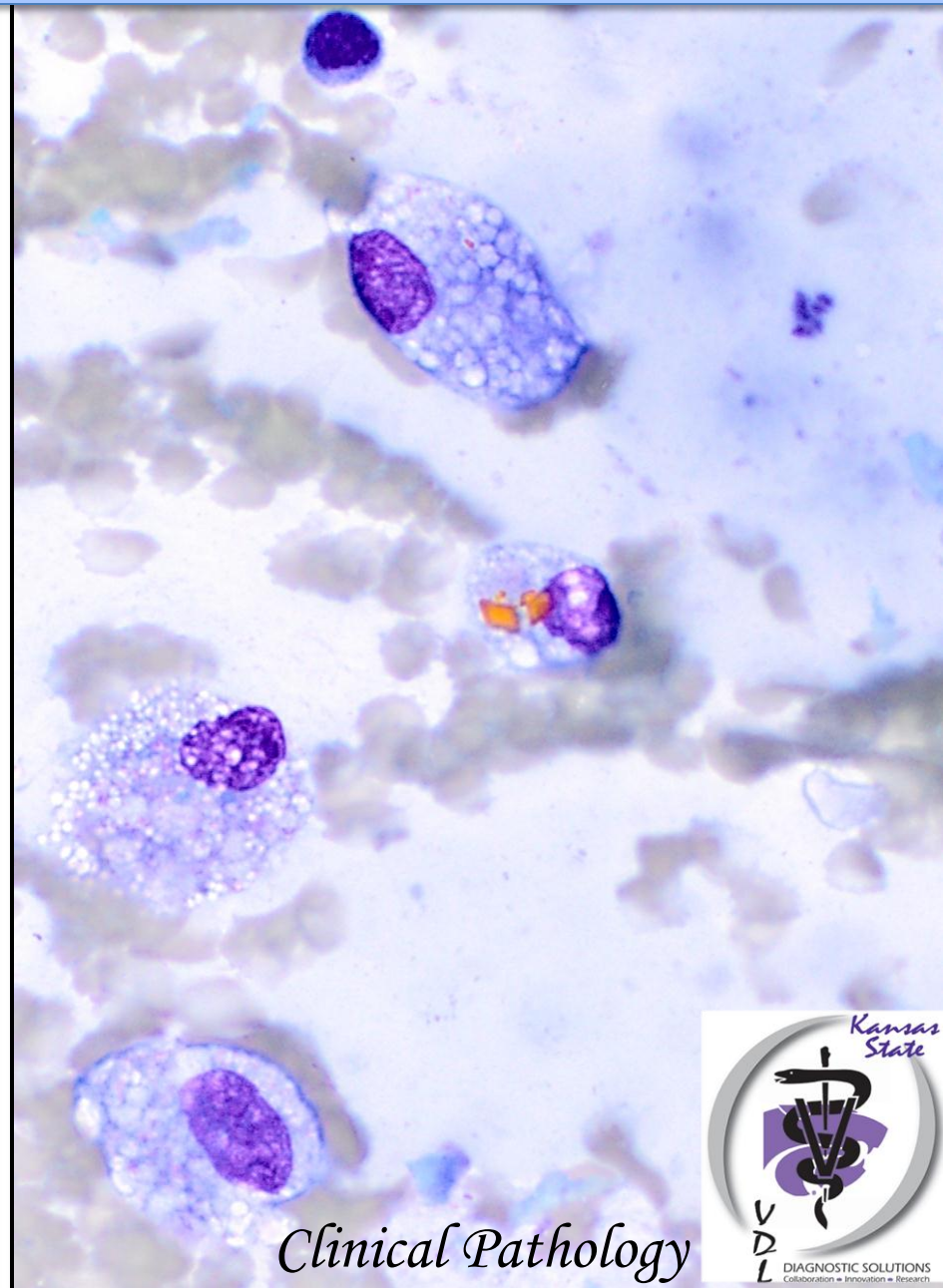
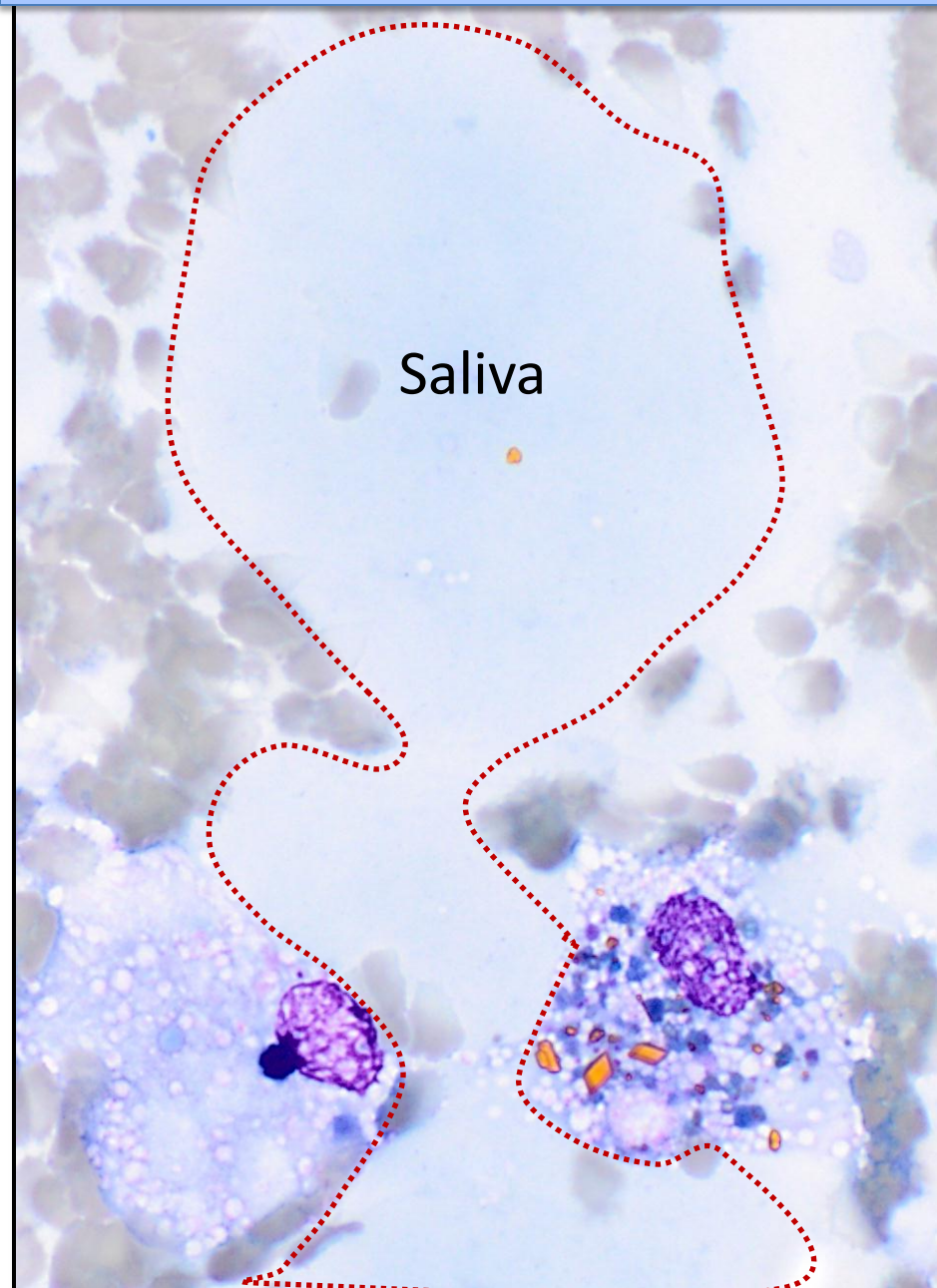
Submandibular mass in a dog



Hematoidin crystals (yellow rhomboidal) and hemosiderin pigment in macrophages – chronic hemorrhage

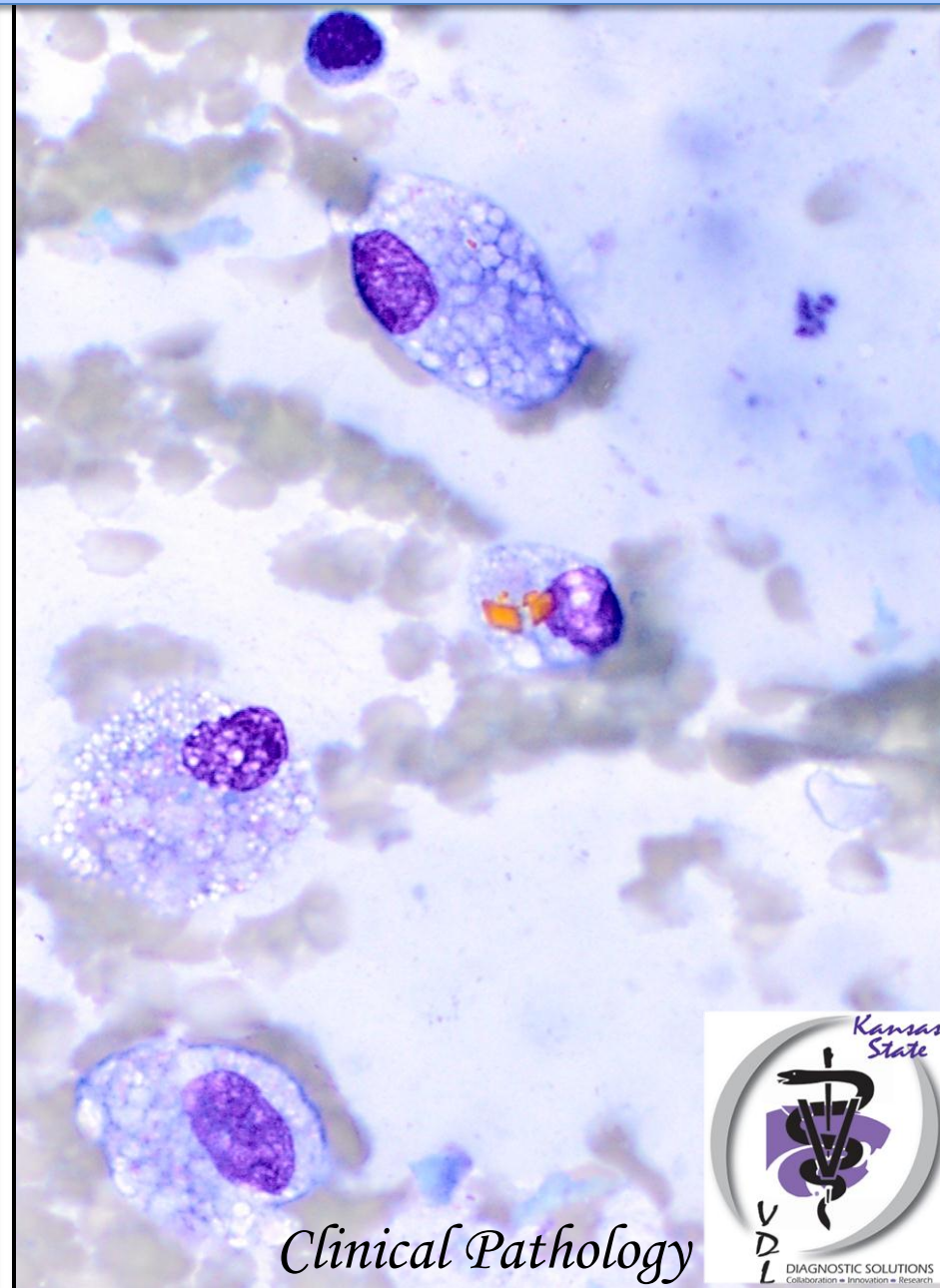
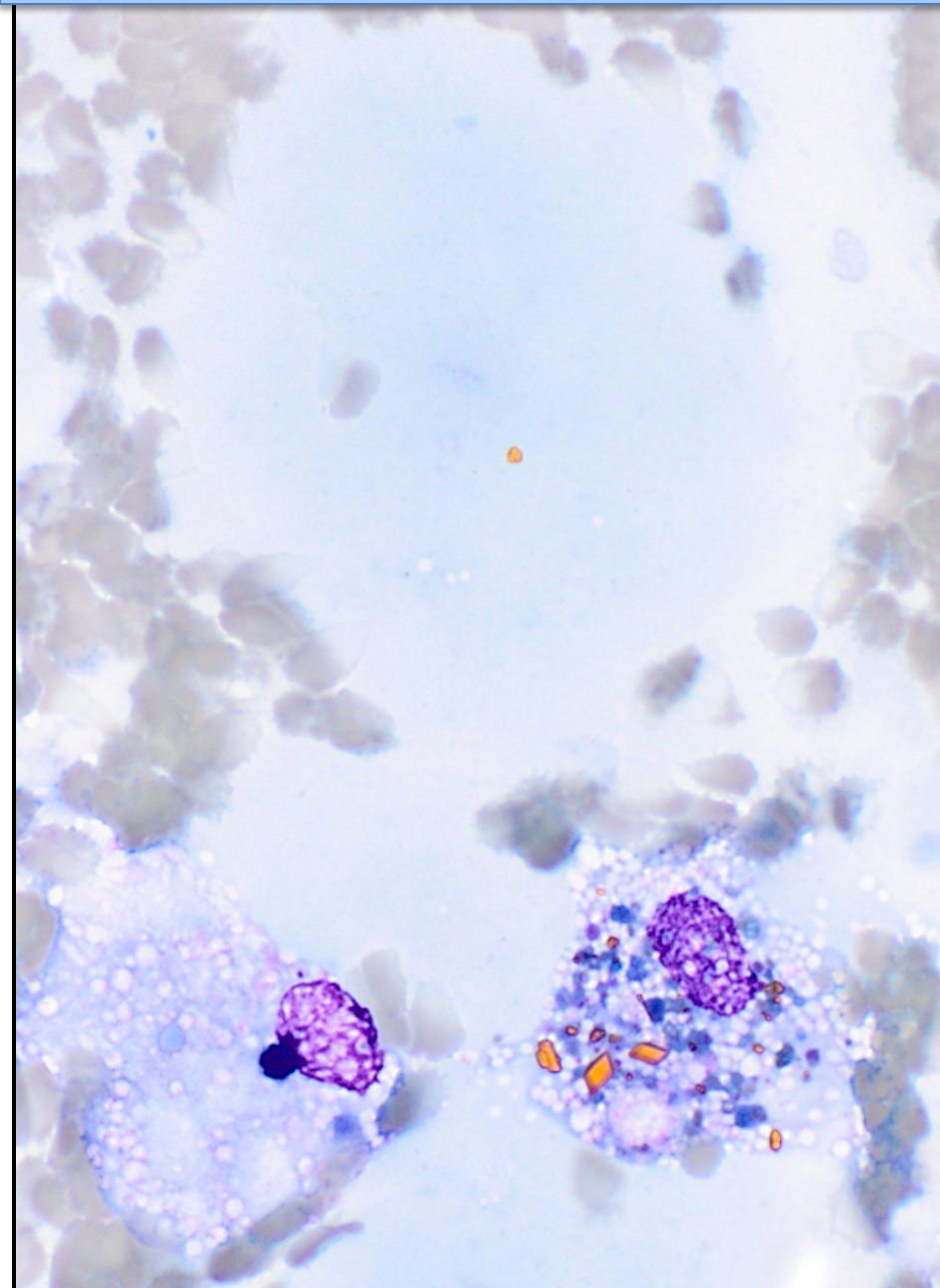


DIAGNOSIS



Clinical Pathology

Sialoceles with chronic hemorrhage



Clinical Pathology