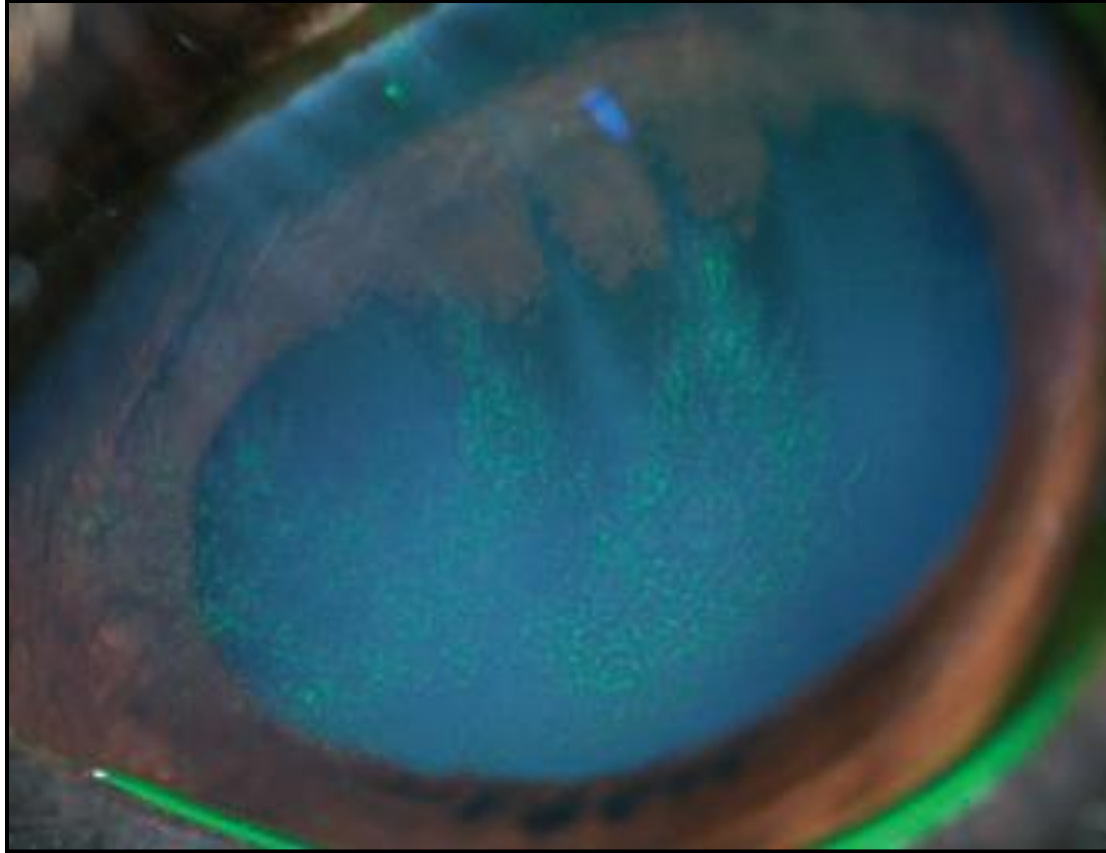


Corneal brushing from a 10-year-old horse



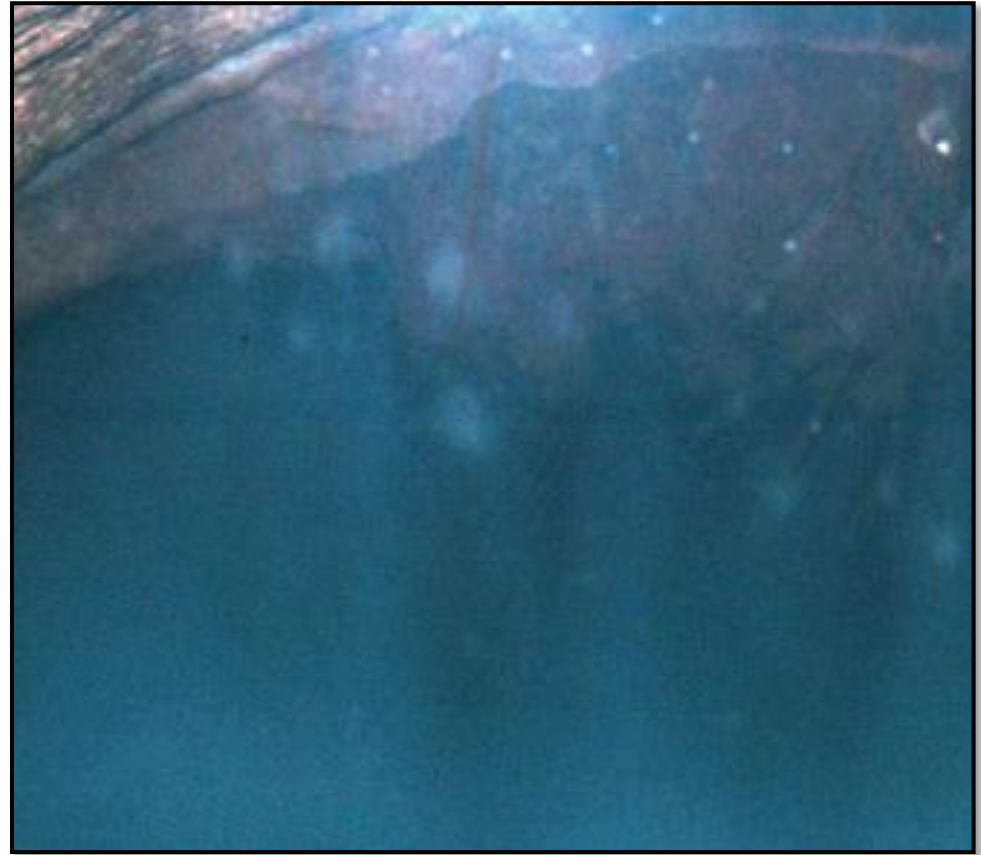
Multiple white superficial fluorescein positive microerosions

Veterinary Ophthalmology (2012) 1–4

Clinical Pathology



Corneal brushing from a 10-year-old horse



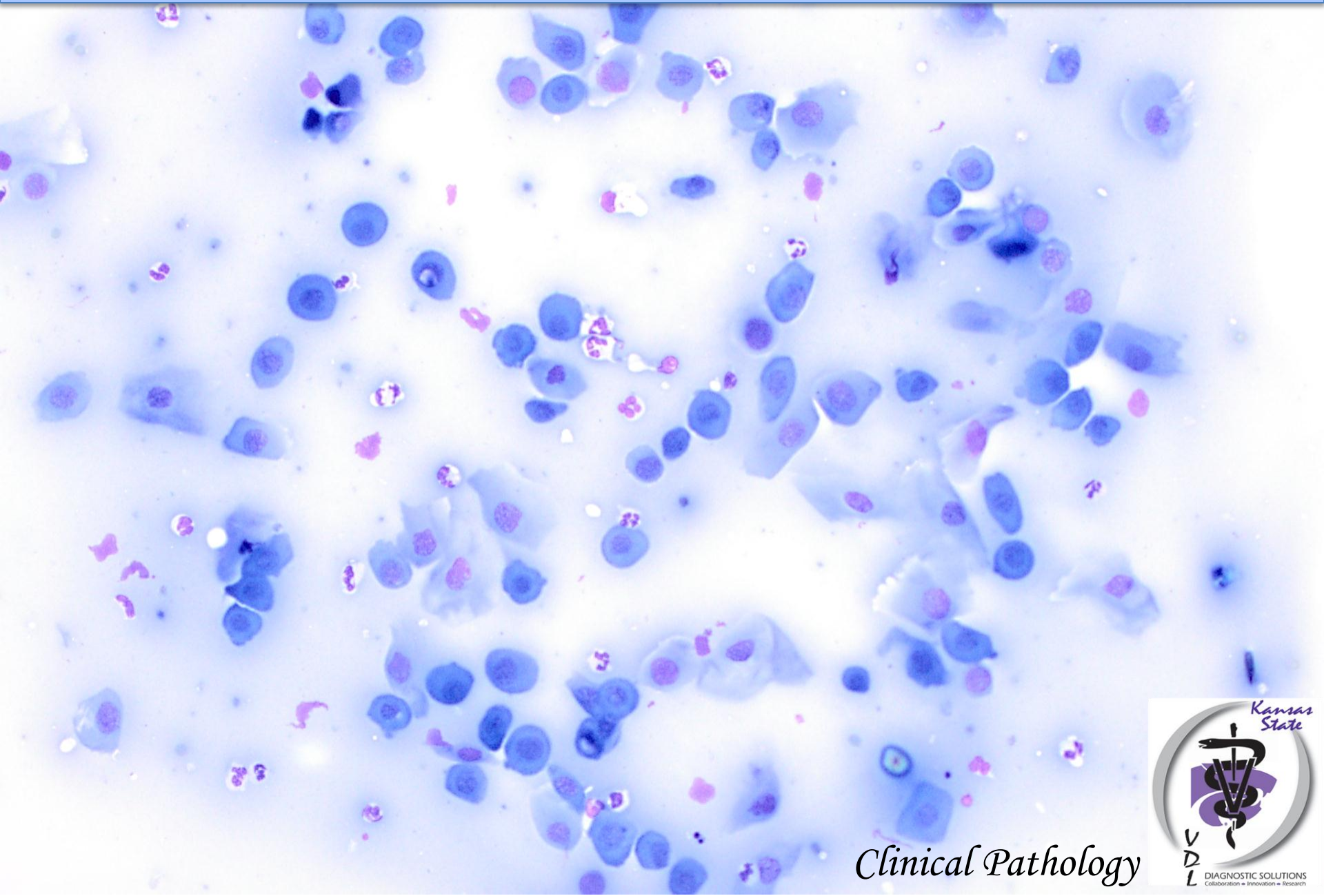
Punctate subepithelial keratomycosis lesions

Veterinary Ophthalmology (2012) 1–4

Clinical Pathology



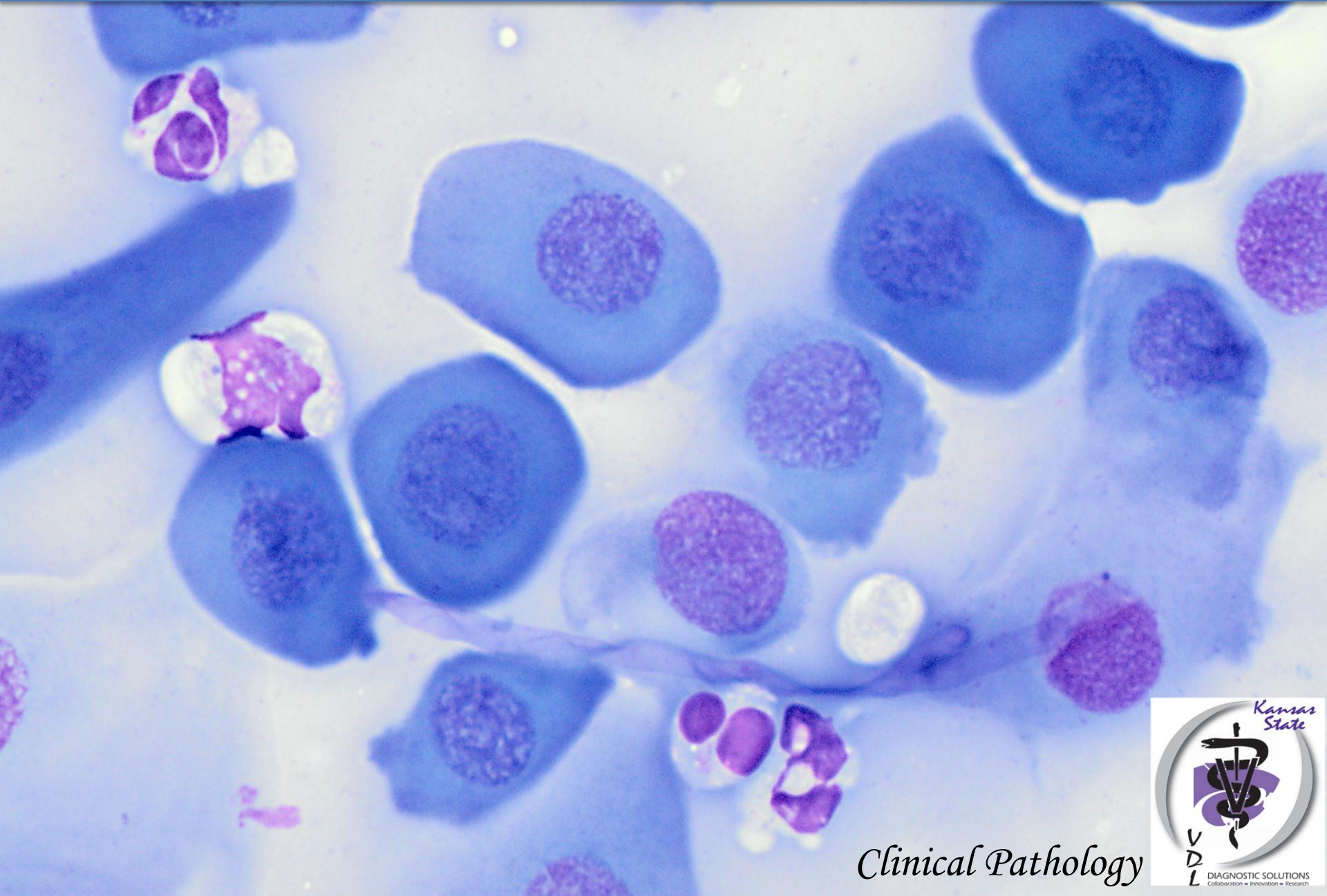
Corneal brushing from a 10-year-old horse



Clinical Pathology



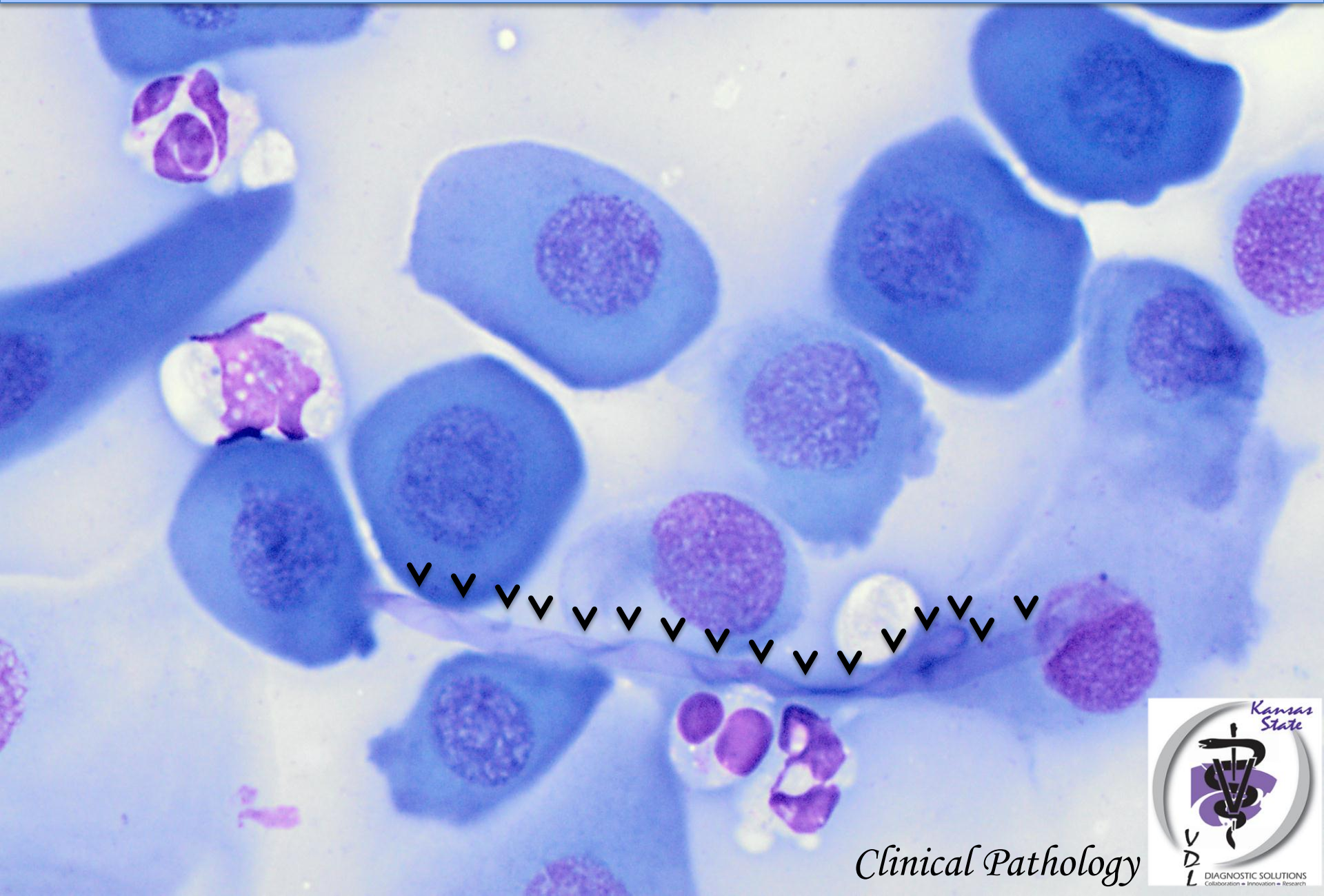
Corneal brushing from a 10-year-old horse



Clinical Pathology



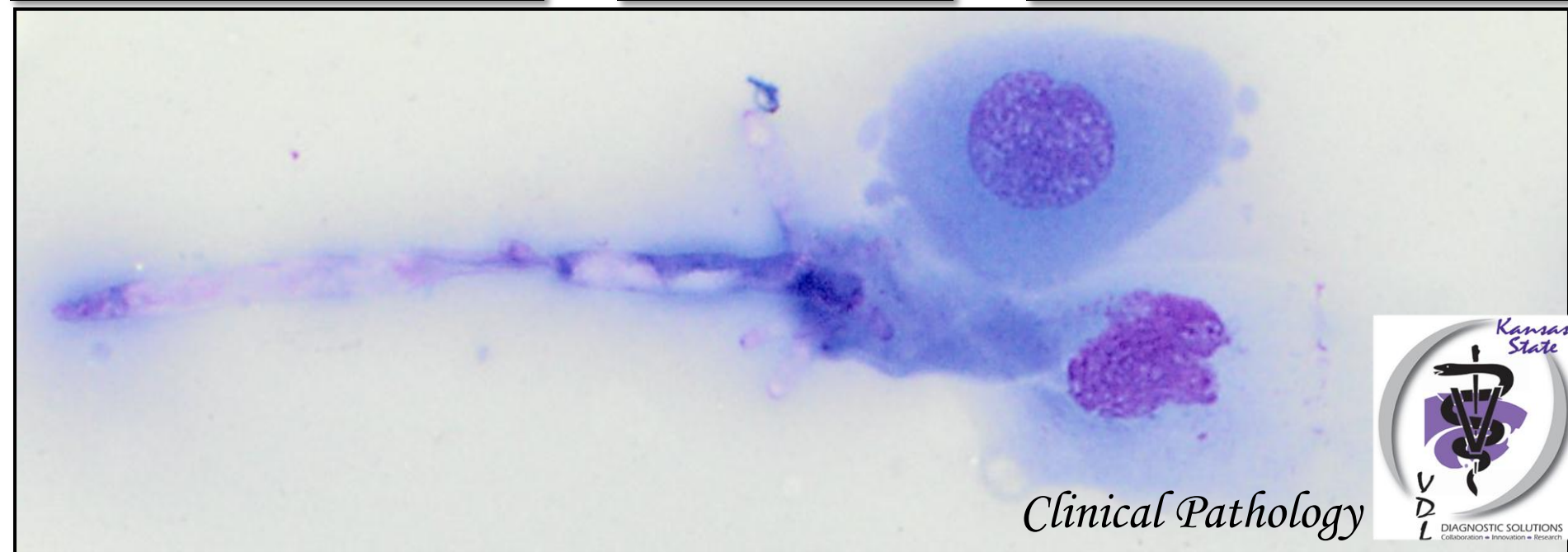
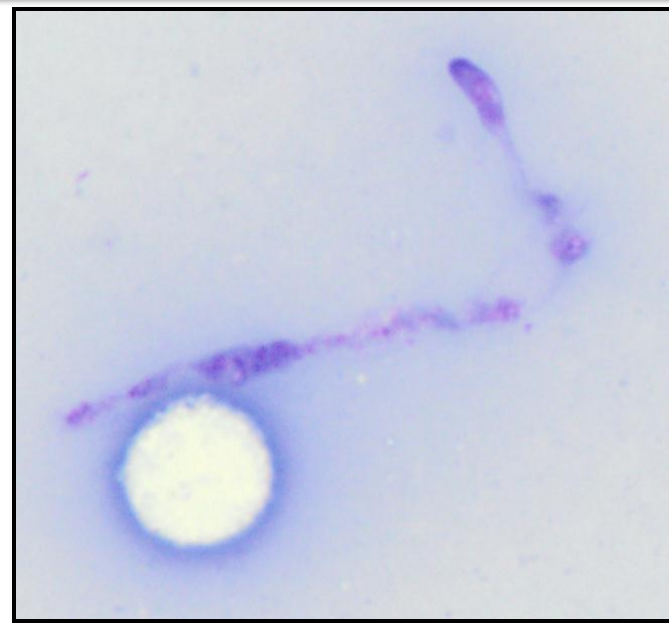
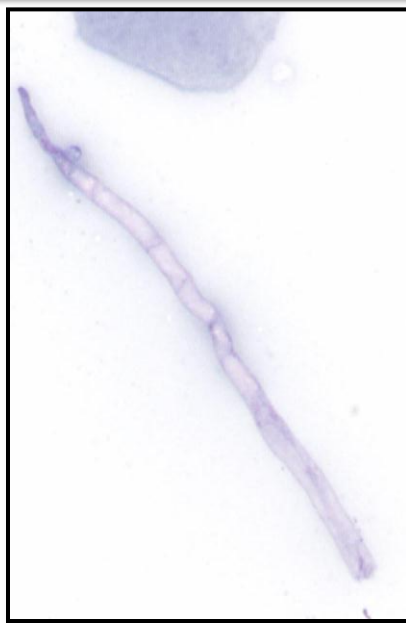
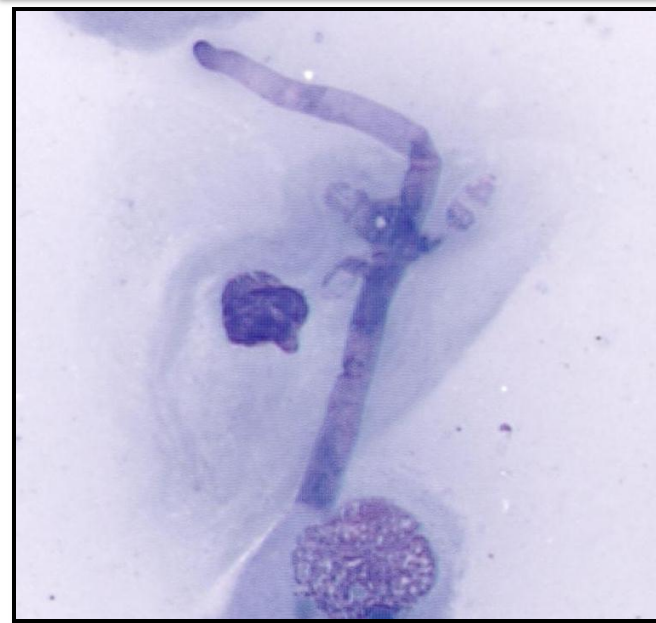
Corneal brushing from a 10-year-old horse



Clinical Pathology



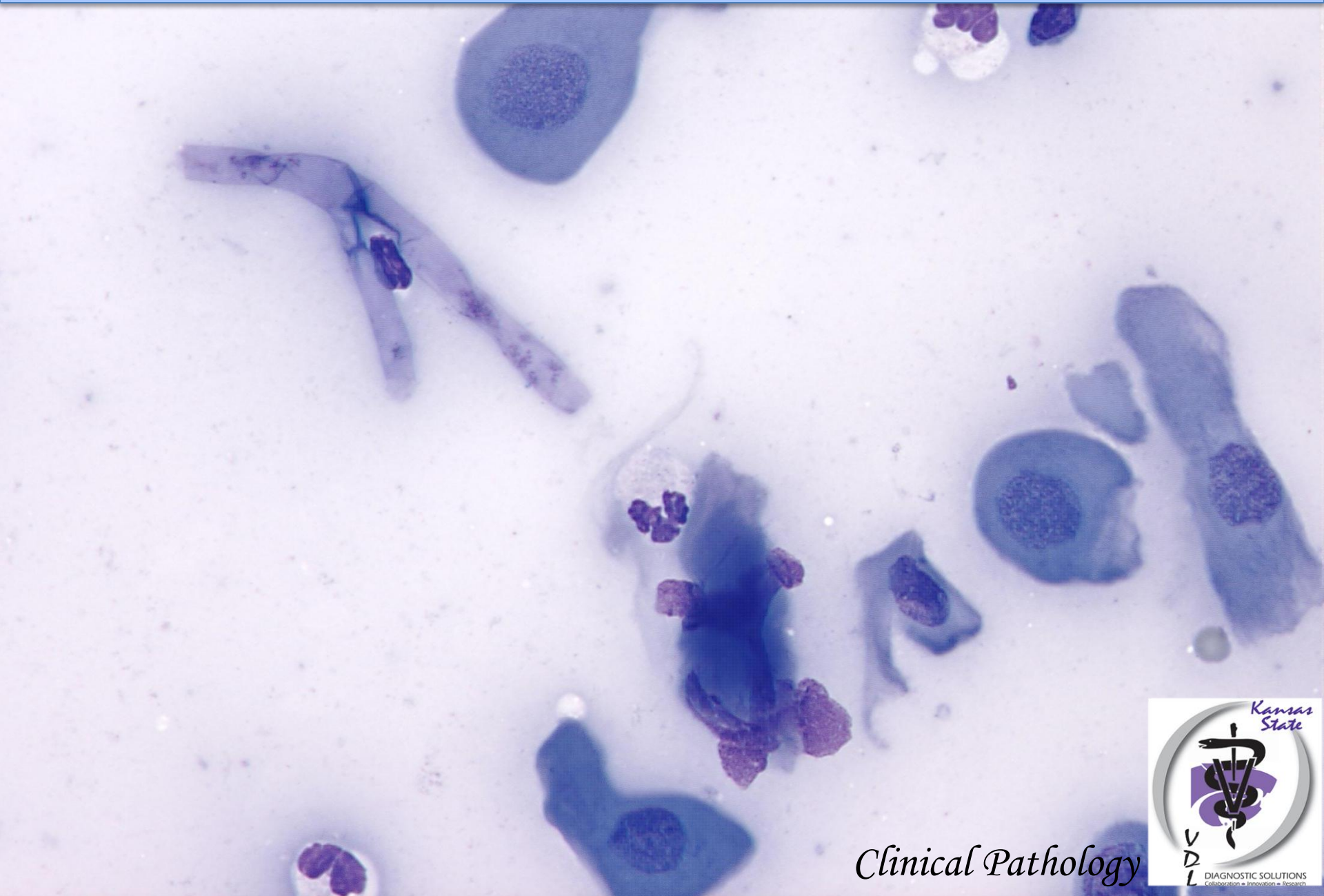
Corneal brushing from a 10-year-old horse



Clinical Pathology



Corneal brushing from a 10-year-old horse



Clinical Pathology



DIAGNOSIS

Branching hyphae



Fungal Keratitis

