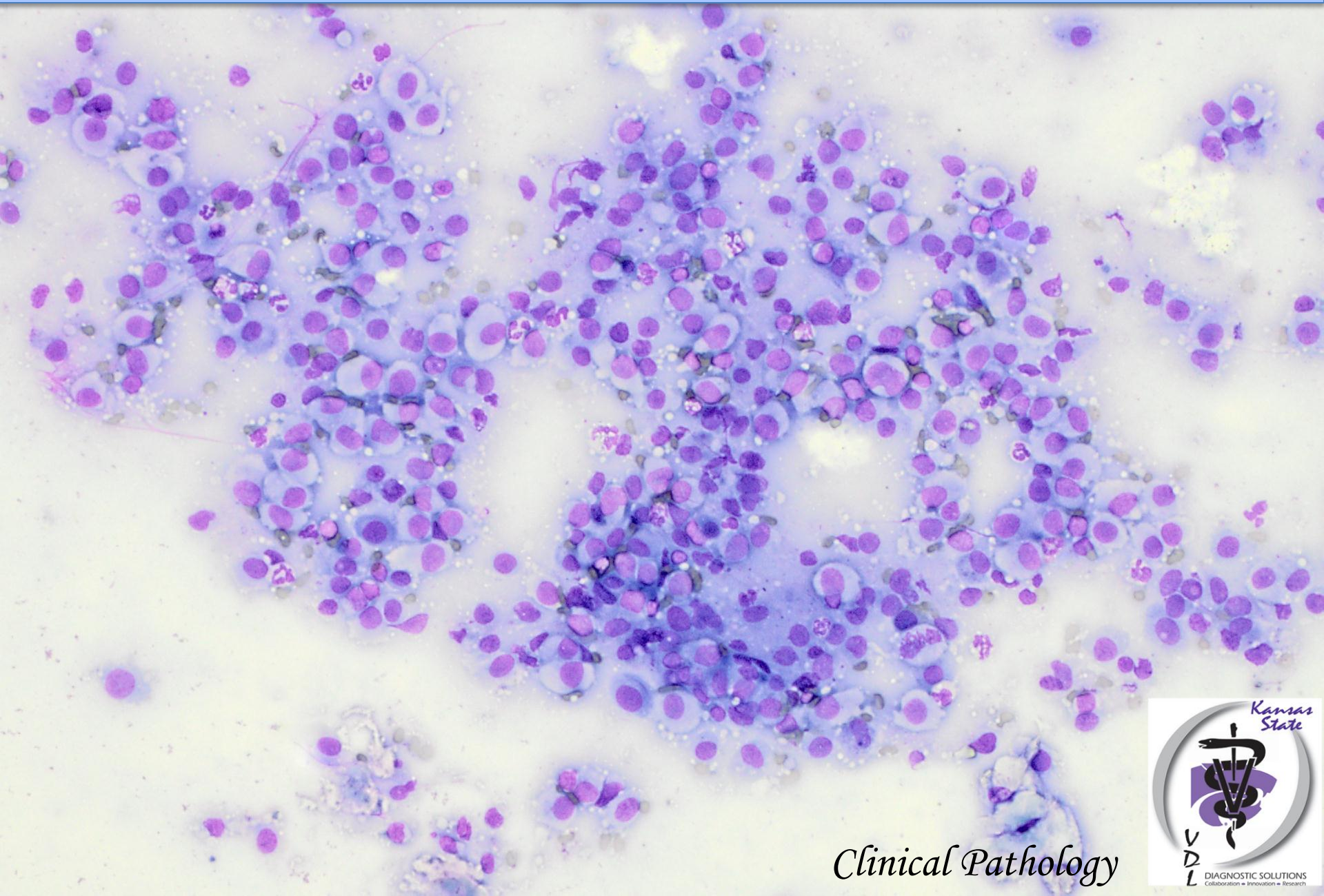
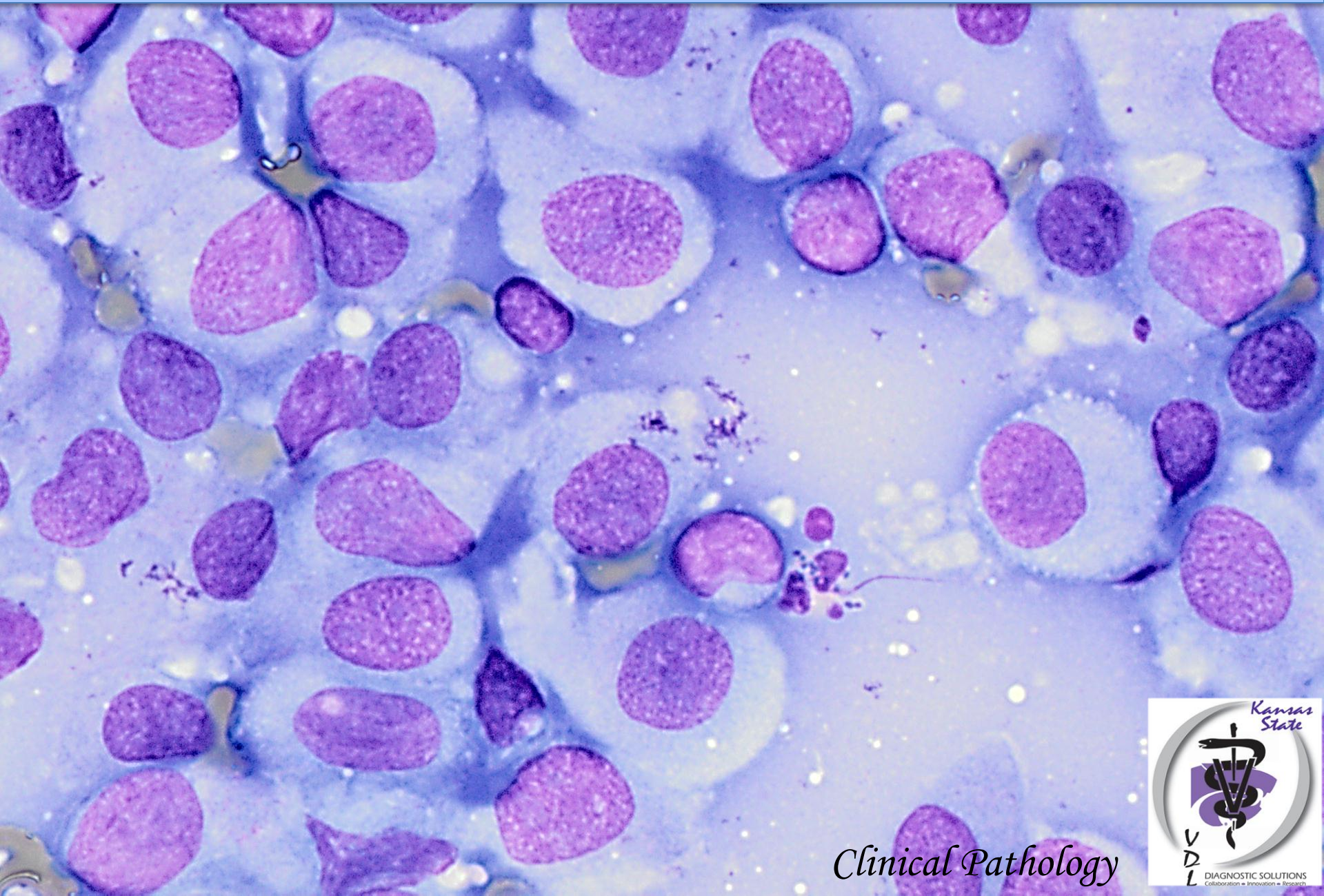


1-cm diameter mass on chin in an 8-year-old dog



Clinical Pathology

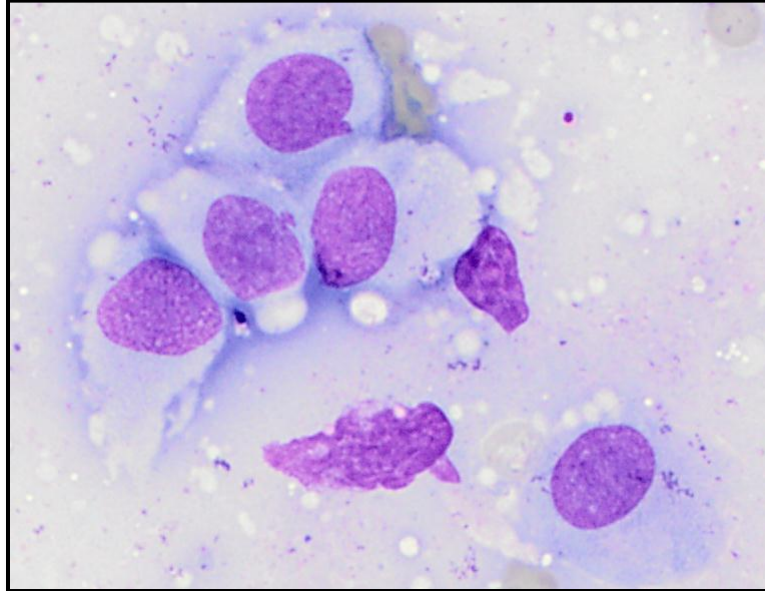
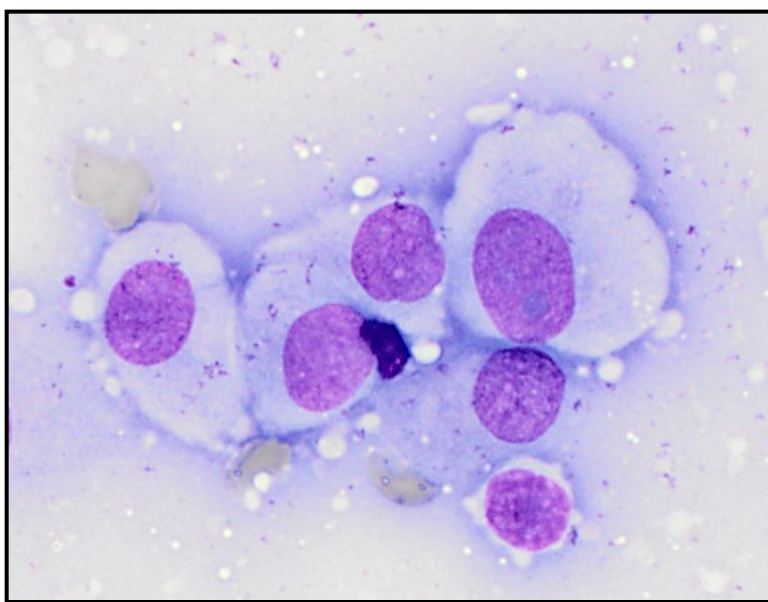
1-cm diameter mass on chin in an 8-year-old dog



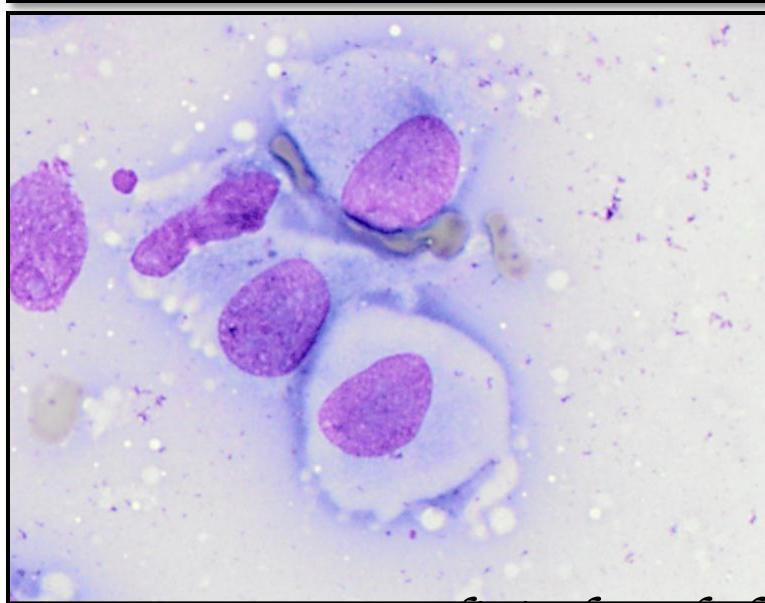
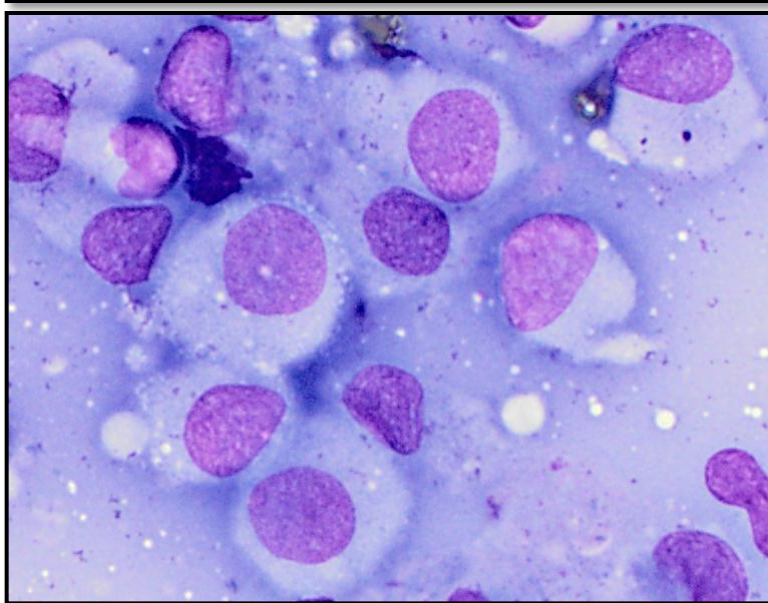
Clinical Pathology



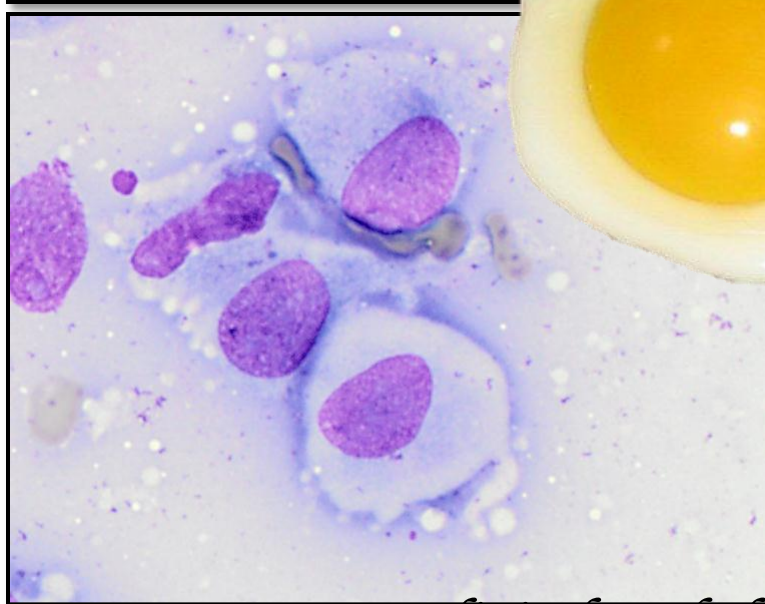
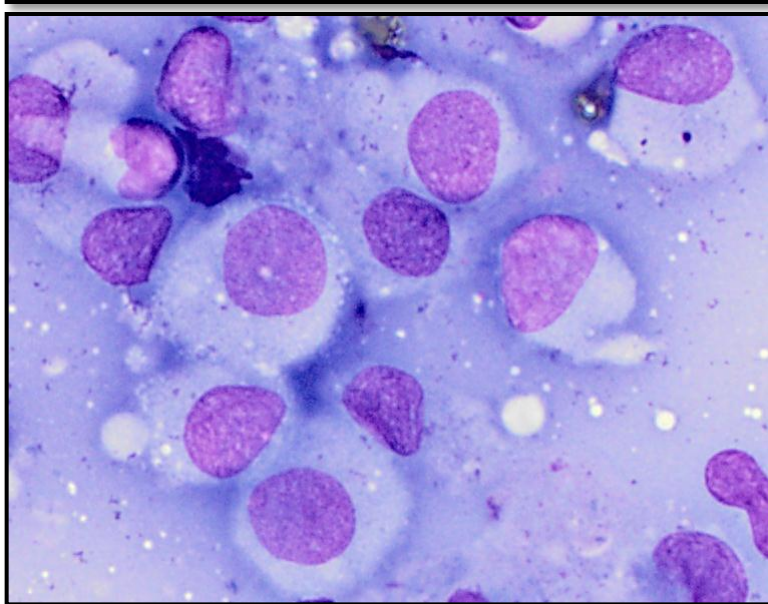
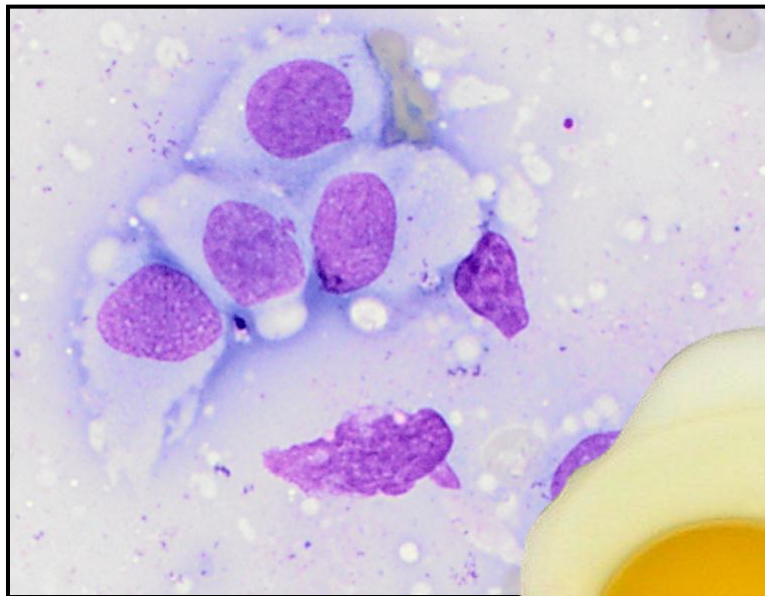
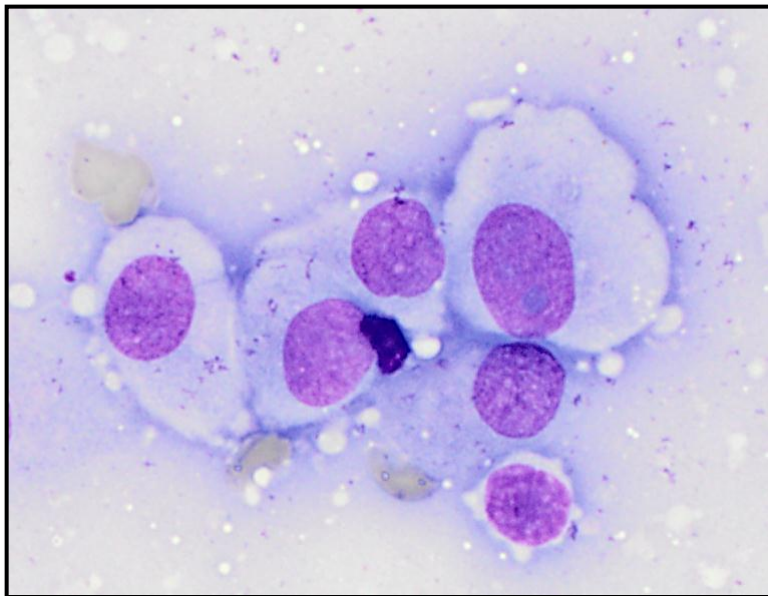
1-cm diameter mass on chin in an 8-year-old dog



Histiocytic cells
with ruffled
edges and large
amounts of
pale cytoplasm

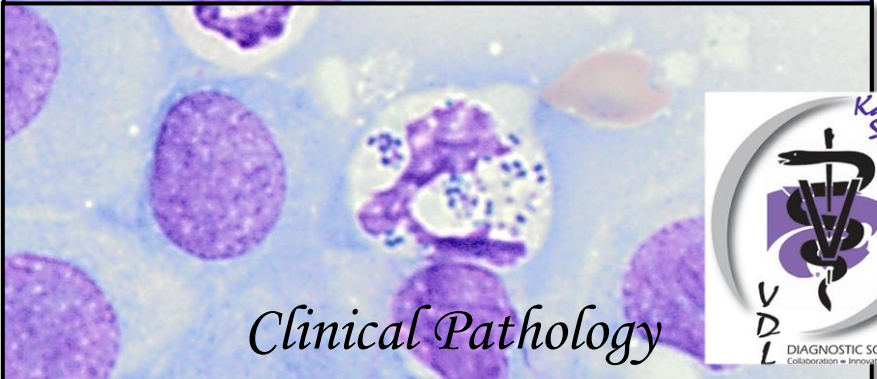
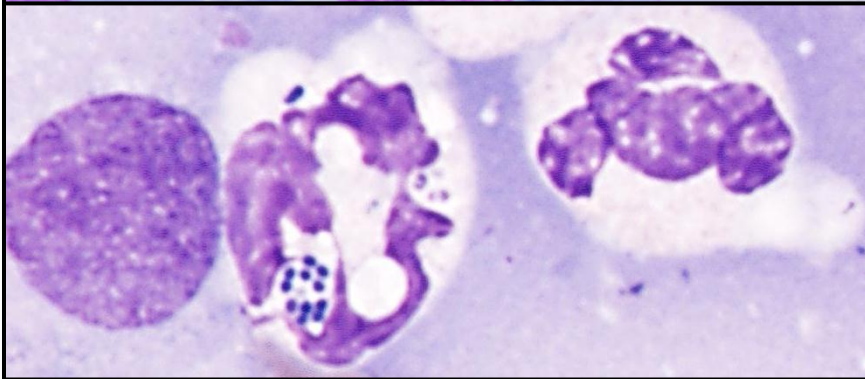
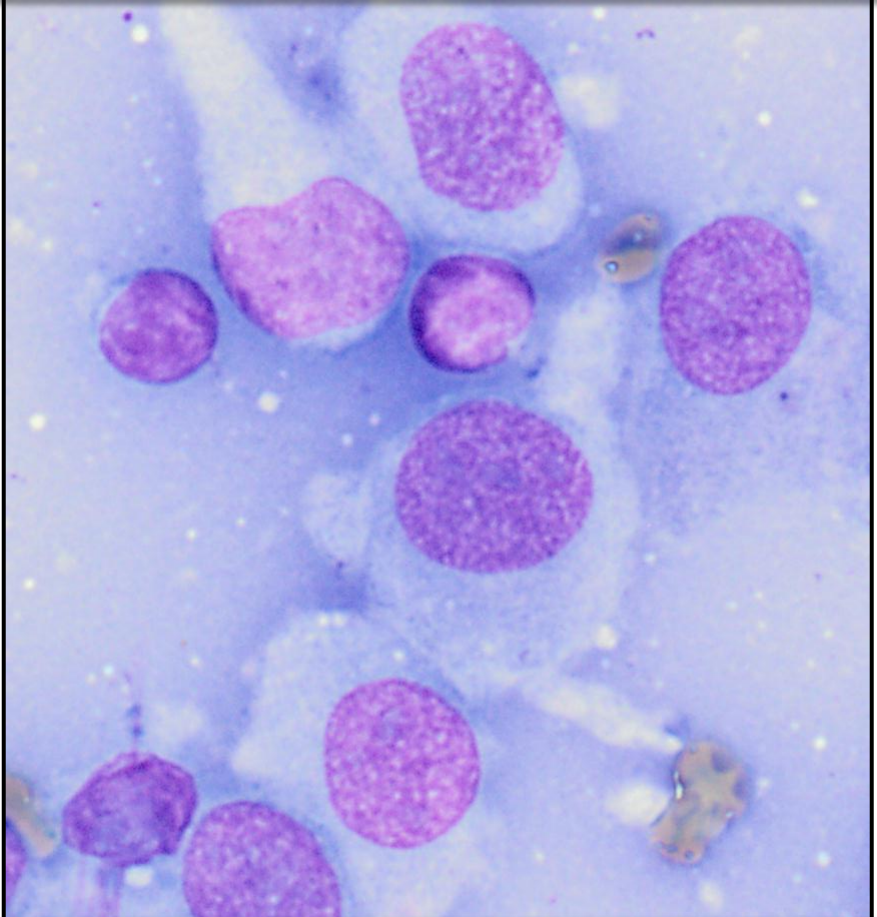
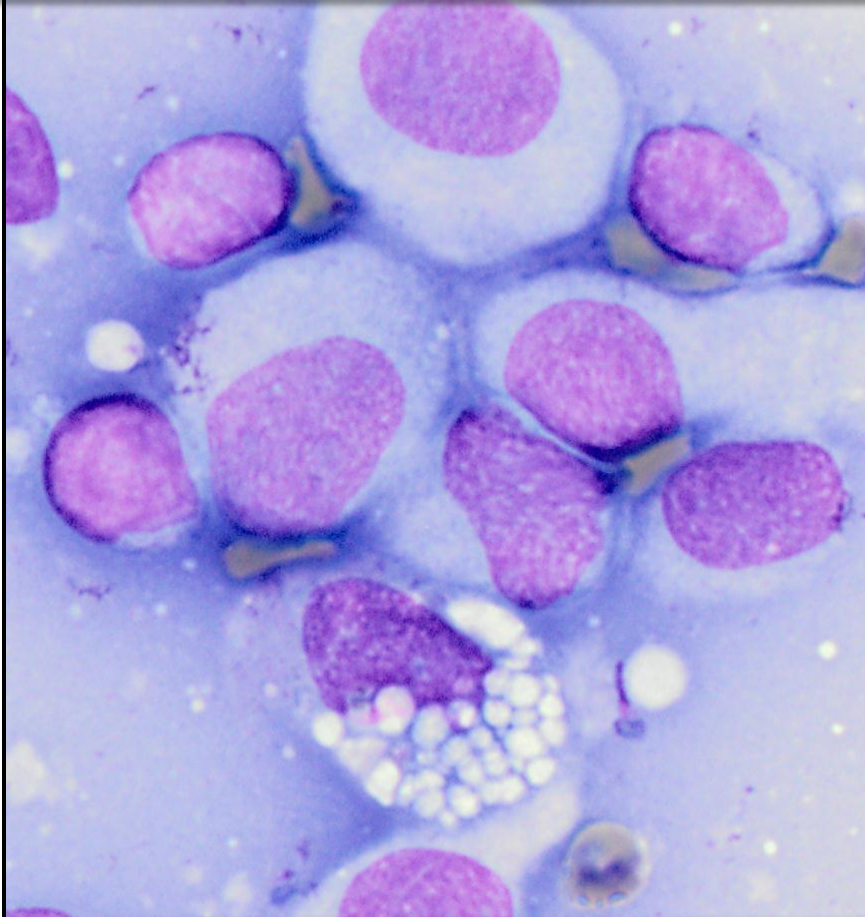


'Fried-egg' appearance



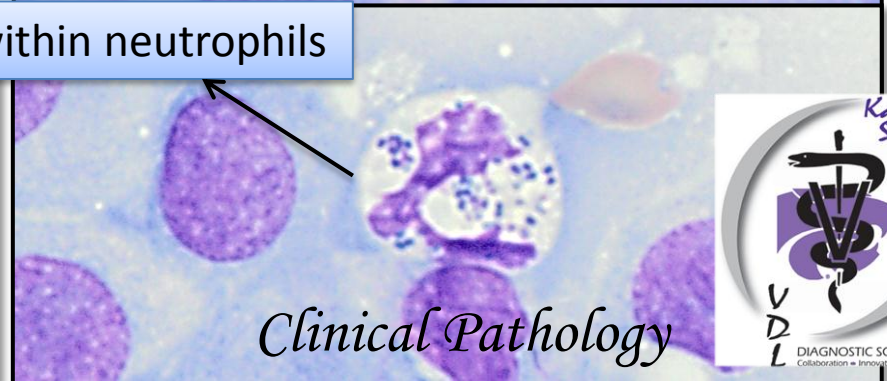
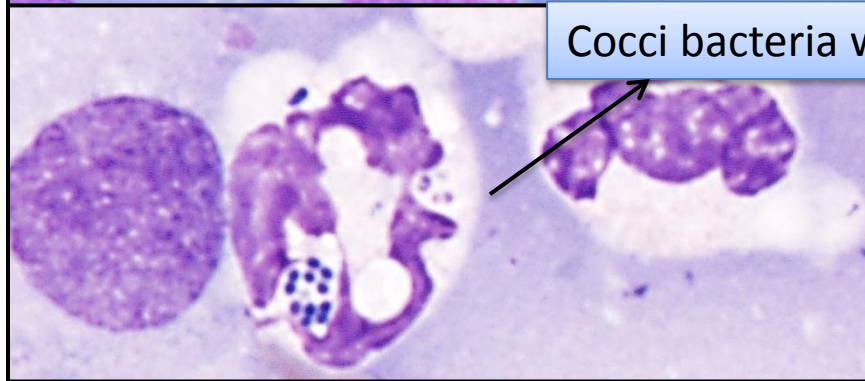
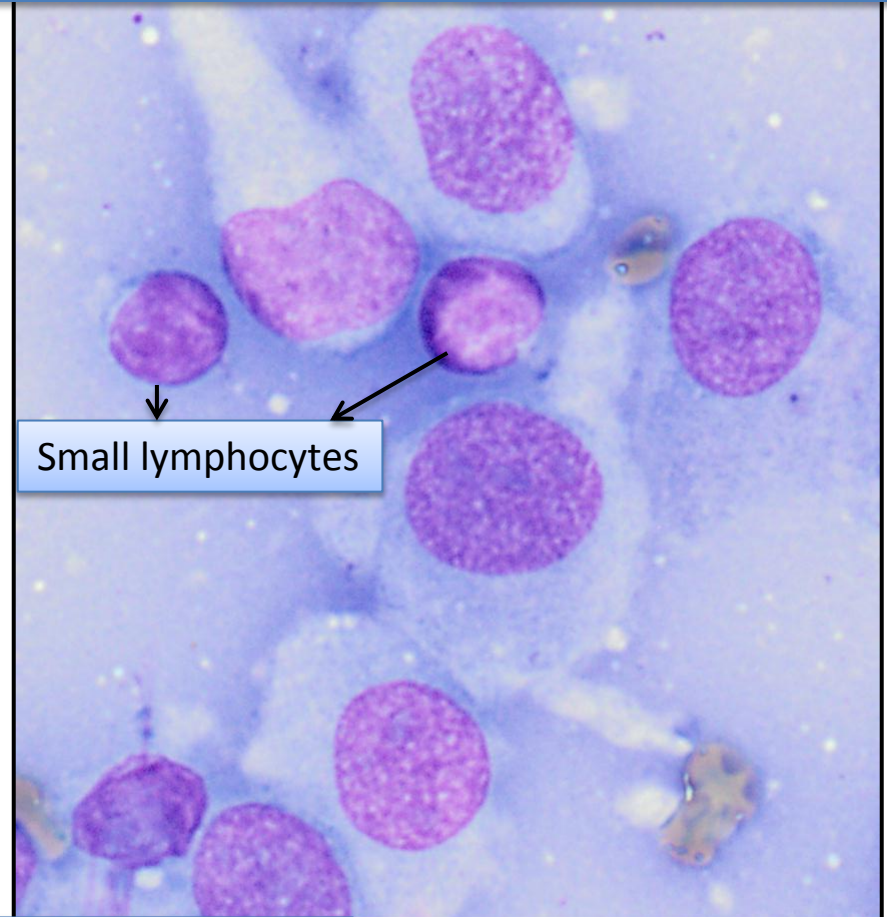
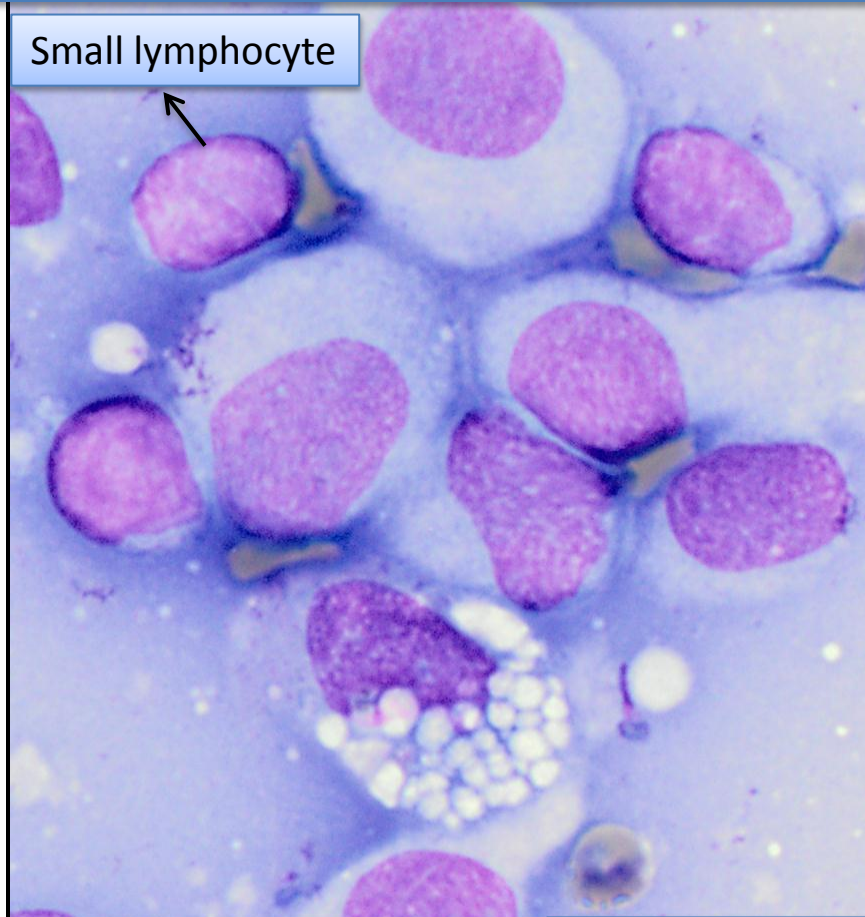
Clinical Pathology

1-cm diameter mass on chin in an 8-year-old dog



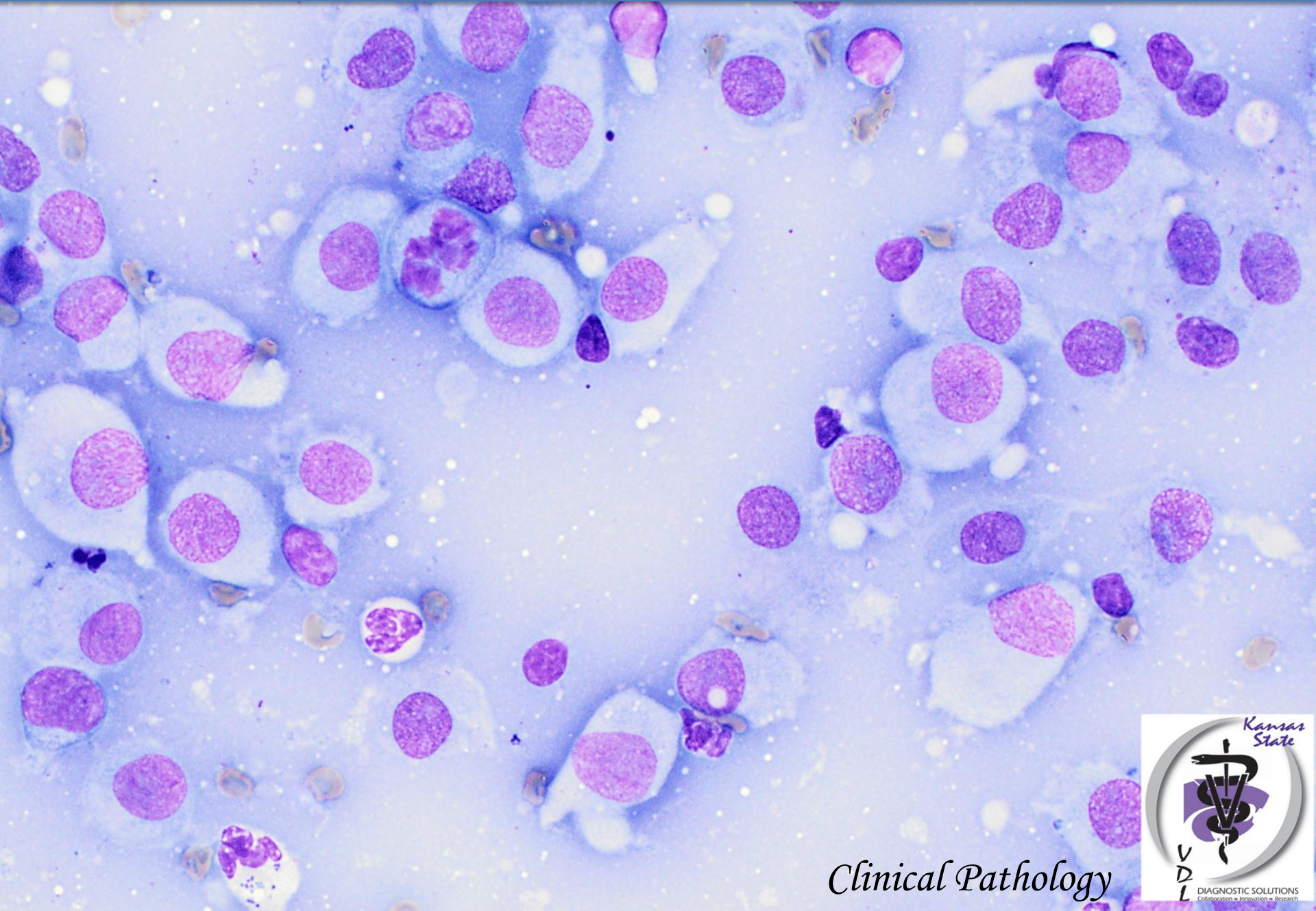
Clinical Pathology

1-cm diameter mass on chin in an 8-year-old dog



Clinical Pathology

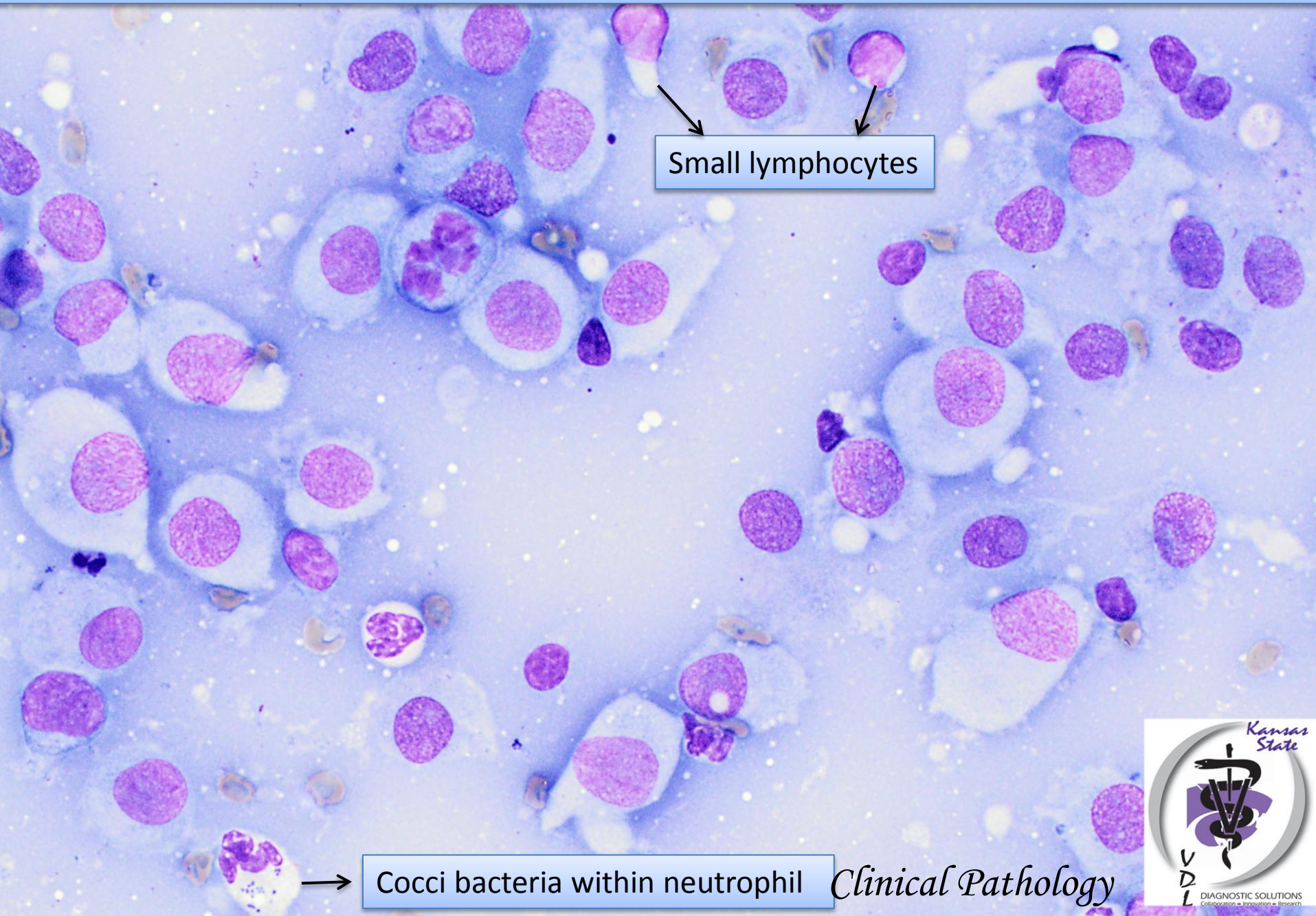
DIAGNOSIS



Clinical Pathology



Regressing histiocytoma with septic neutrophilic inflammation



Clinical Pathology