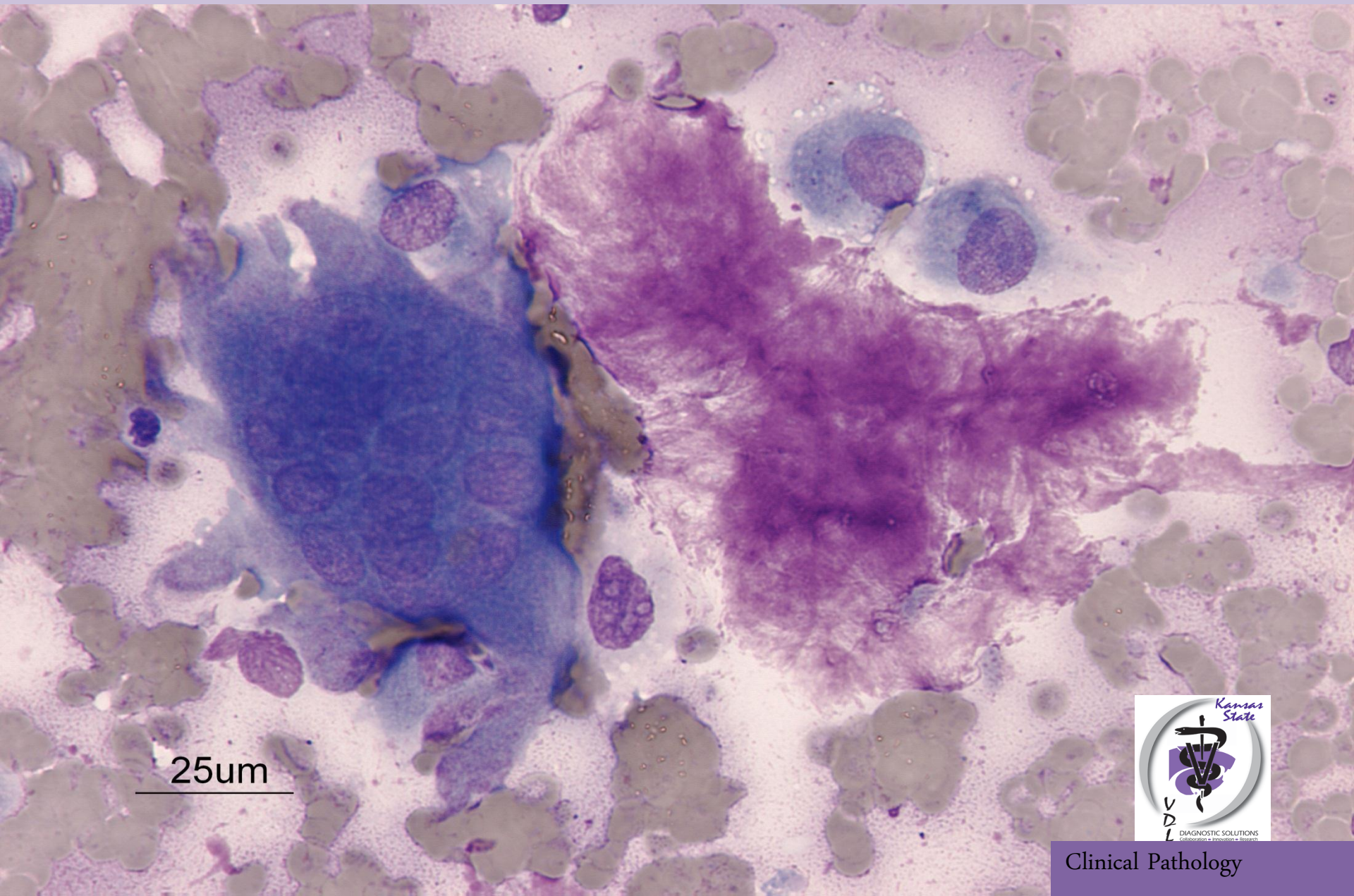


Aspirate of a bone mass on the right forelimb of a
13-year-old, spayed female, Labrador Retriever

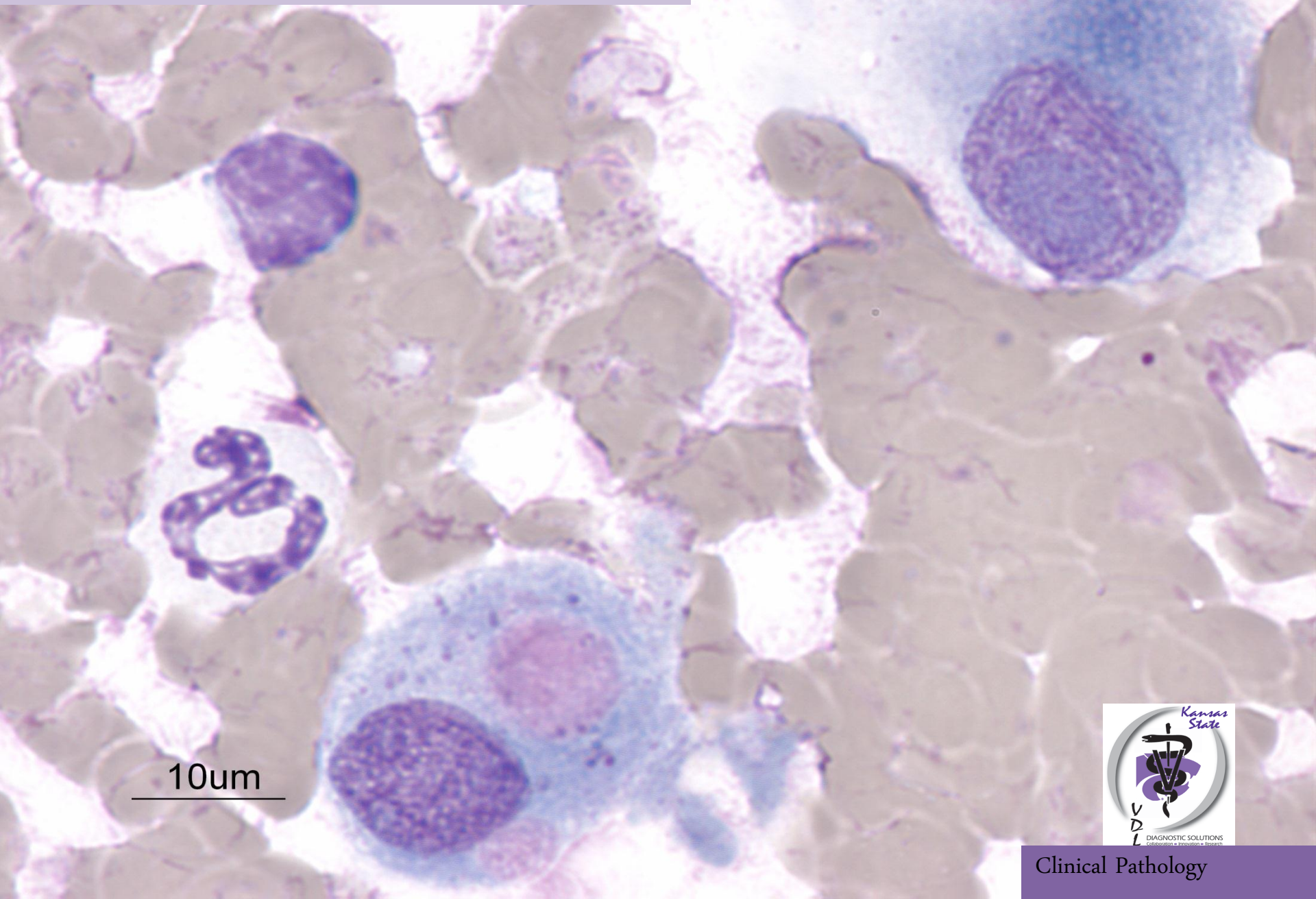


25um



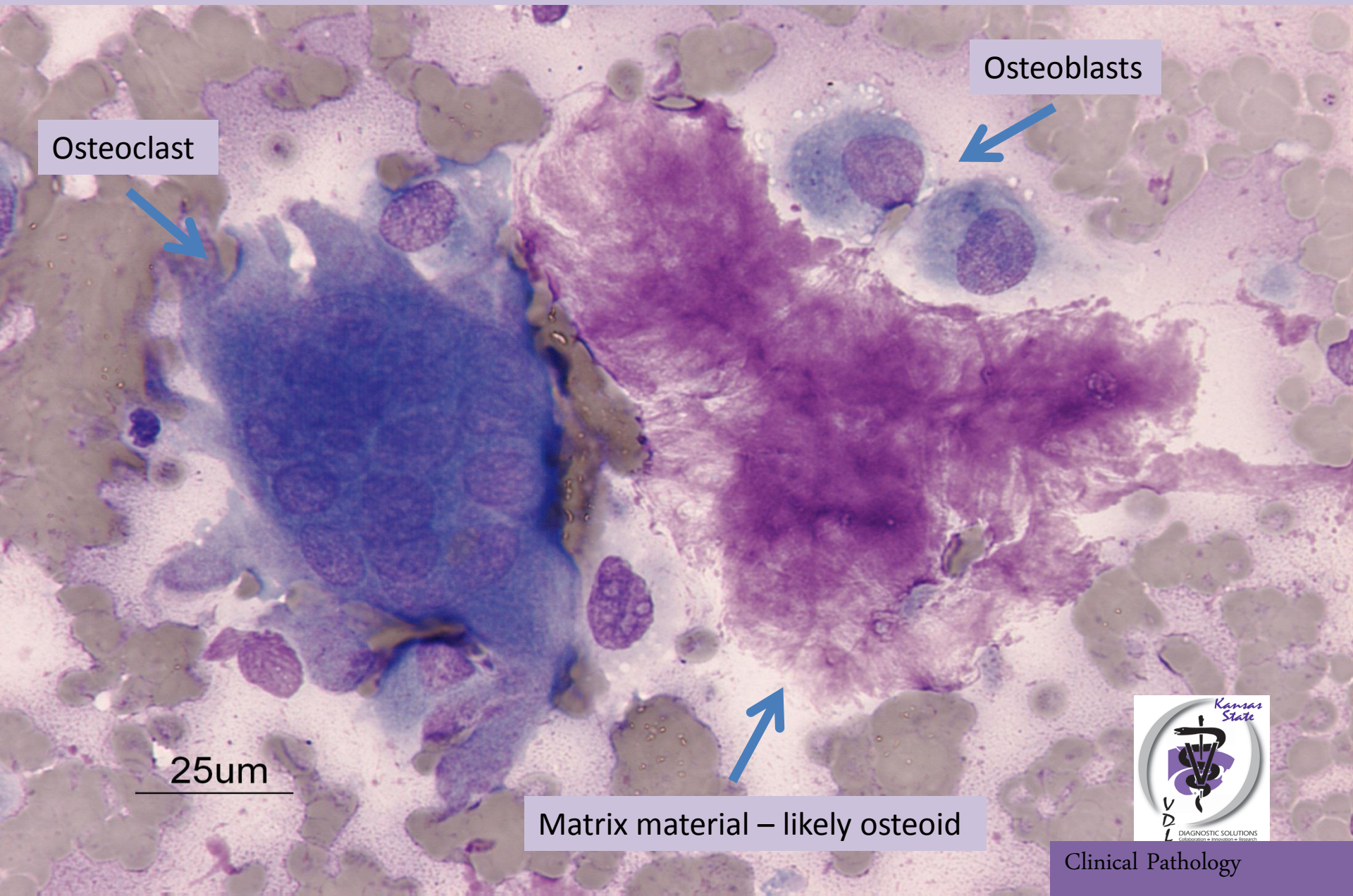
Clinical Pathology

Aspirate of a bone mass on the right forelimb of a
13-year-old, spayed female, Labrador Retriever



Clinical Pathology

Aspirate of a bone mass on the right forelimb of a 13-year-old, spayed female, Labrador Retriever



Aspirate of a bone mass on the right forelimb of a 13-year-old, spayed female, Labrador Retriever

Lymphocyte

Neutrophil

Osteoblast

Giant nucleolus
(feature of malignancy)

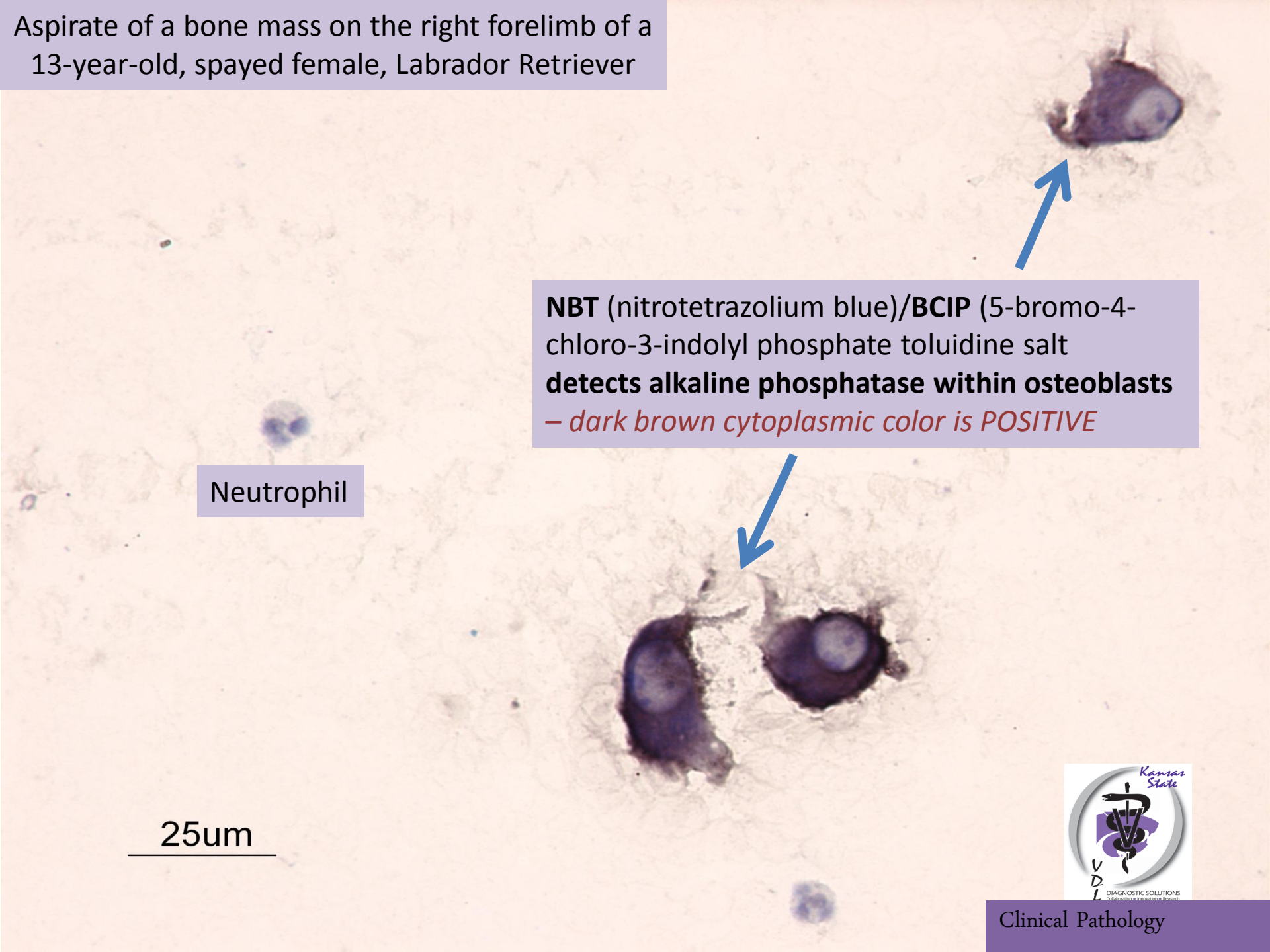
Secretory matrix material

Osteoblast

10um



Aspirate of a bone mass on the right forelimb of a 13-year-old, spayed female, Labrador Retriever



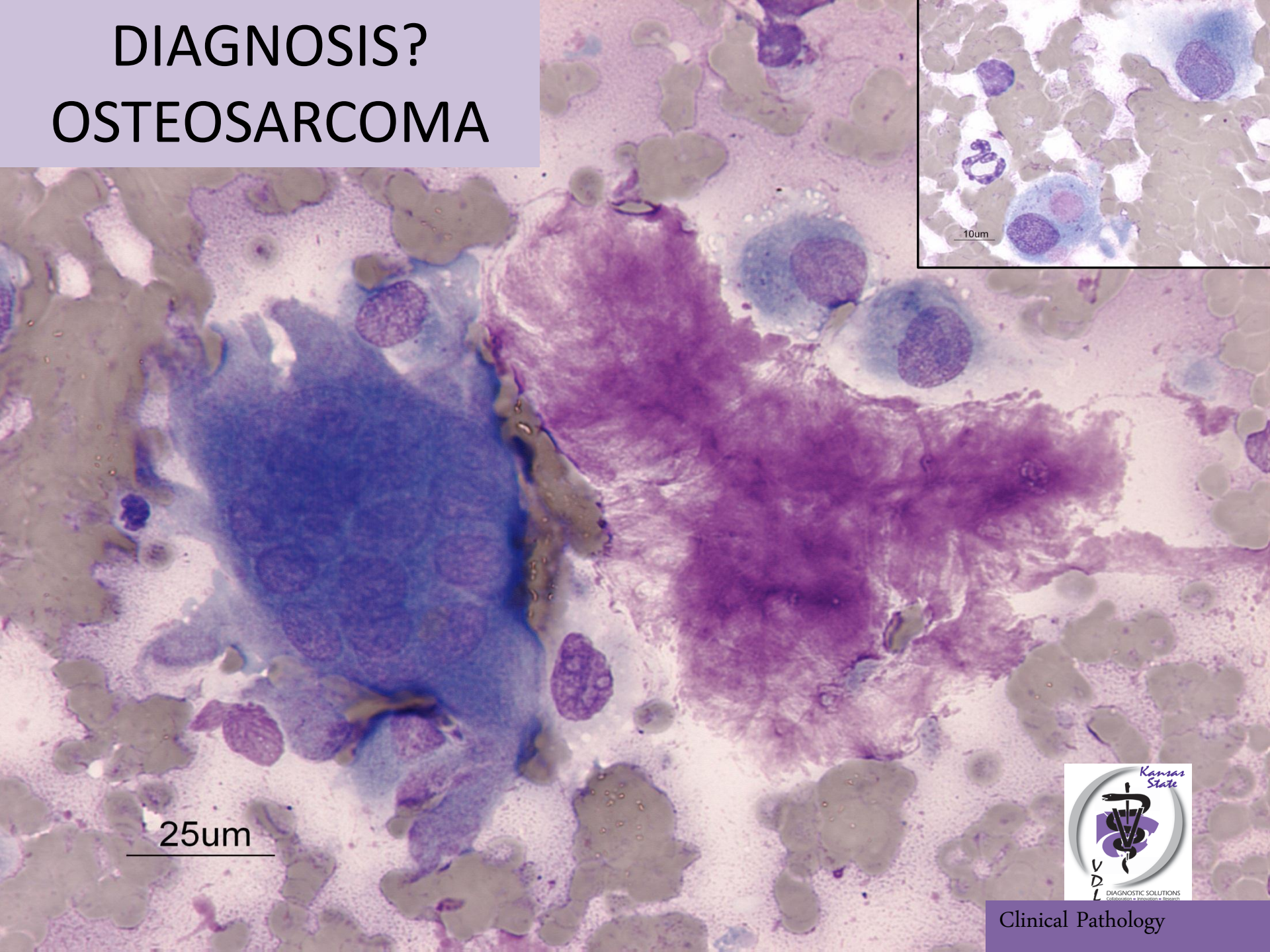
NBT (nitrotertrazolium blue)/**BCIP** (5-bromo-4-chloro-3-indolyl phosphate toluidine salt) **detects alkaline phosphatase within osteoblasts**
– *dark brown cytoplasmic color is POSITIVE*

Neutrophil

25um



DIAGNOSIS? OSTEOSARCOMA



25um



Clinical Pathology