

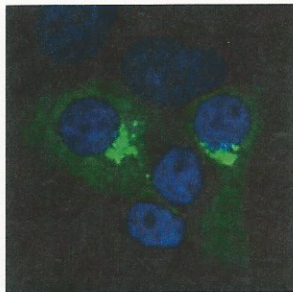
Hybridoma Bank for Emerging and Transboundary Animal Pathogens

Reagents and Technologies, KSVDL

[Link for order](#)

## PEDV mAb13-519

<b>Antigen:</b> Porcine Epidemic Diarrhea Virus Spike protein	<b>Hybridoma Cells Available:</b> Yes
<b>Antigen Species:</b> Swine	<b>Depositor:</b> Fang, Y
<b>Antigen Sequence:</b> Full length Spike protein	<b>Depositors Institution:</b> Kansas State University
<b>Antigen Molecular Weight:</b>	<b>Immunogen:</b> PEDV Spike
<b>Gene:</b>	<b>Immunogen Sequence:</b>
<b>Isotype:</b> IgG2a	<b>Cross Reactive Antigen:</b>
<b>Clonality:</b> Monoclonal	<b>Myeloma Strain:</b>
<b>Epitope Mapped:</b>	<b>Uniprot ID:</b>
<b>Host Species:</b> Mouse	<b>Entrez Gene ID:</b>
<b>Additional Characterization:</b>	<b>Recommended Applications:</b> Immunofluorescence, Immunoprecipitation
<b>Additional Information:</b>	<b>Positive Tested Species Reactivity:</b> Swine



Immunofluorescence staining (IFA) of PEDV infected Vero 76 cells.